

Parkheath

Sold on Service

Kentish Town Road NW1
£1,192 PCM (£275 per week)

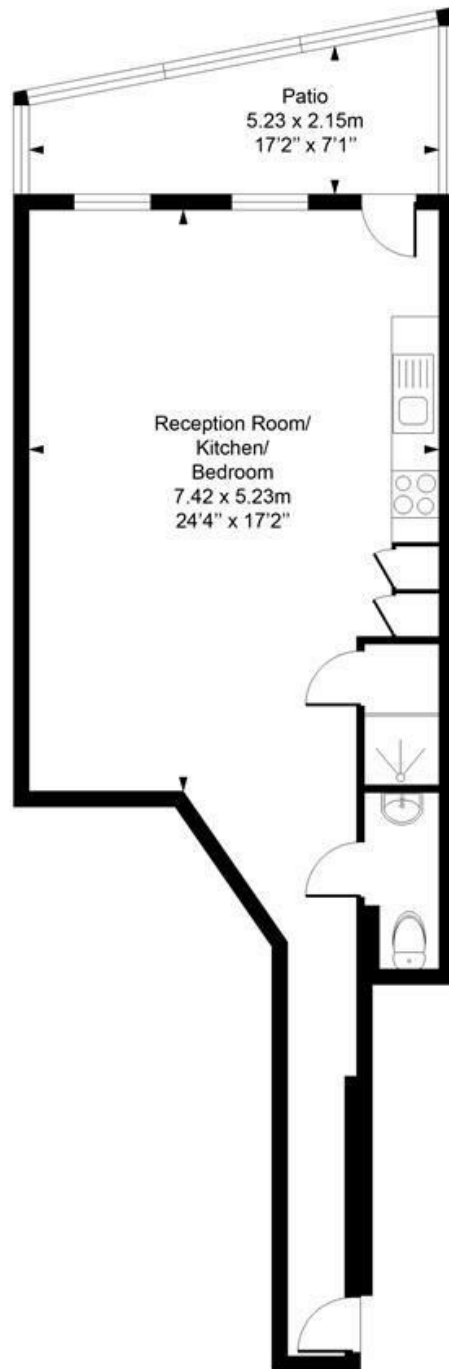


Incredibly spacious studio apartment
Access to a private patio
A few minutes walk to Camden Towns local amenities and famous market

Ground floor of period conversion
Ample storage throughout
Short distance to Camden and Kentish Town Underground station (Northern line, Zone 2)

Kentish Town Office 020 7485 0400

Kentish Rown Road
Approximate Gross Internal Area = 48.6 Sq m / 524 sq ft



Ground Floor

Measured in accordance with RICS guidelines. Every attempt is made to ensure accuracy
However all measurements are approximate.
The floor plan is illustrative purposes only and is not to scale
ELLIE CLAIRE PHOTOGRAPHY LTD
www.ellieclairephotography.com

The particulars do not constitute part of an offer or contract. The particulars, including text, photographs and plans, are for the guidance only of prospective purchasers/tenants and must not be relied upon as statements of fact. The descriptions provided therein represent the opinion of the author and whilst given in good faith should not be construed as statements of fact. Nothing in these particulars shall be deemed a statement that the property is in good condition or otherwise or that any services or facilities are in good working order. All measurements are approximate