

# Parkheath

*Sold on Service*

---

**Crescent Road N8**  
**£1,213 PCM (£280 per week) - Band**



Fantastic one bedroom apartment in the heart of Crouch End  
Wooden floors throughout  
Contemporary kitchen with integrated appliances  
Sizeable bedroom with direct access to terrace and communal garden

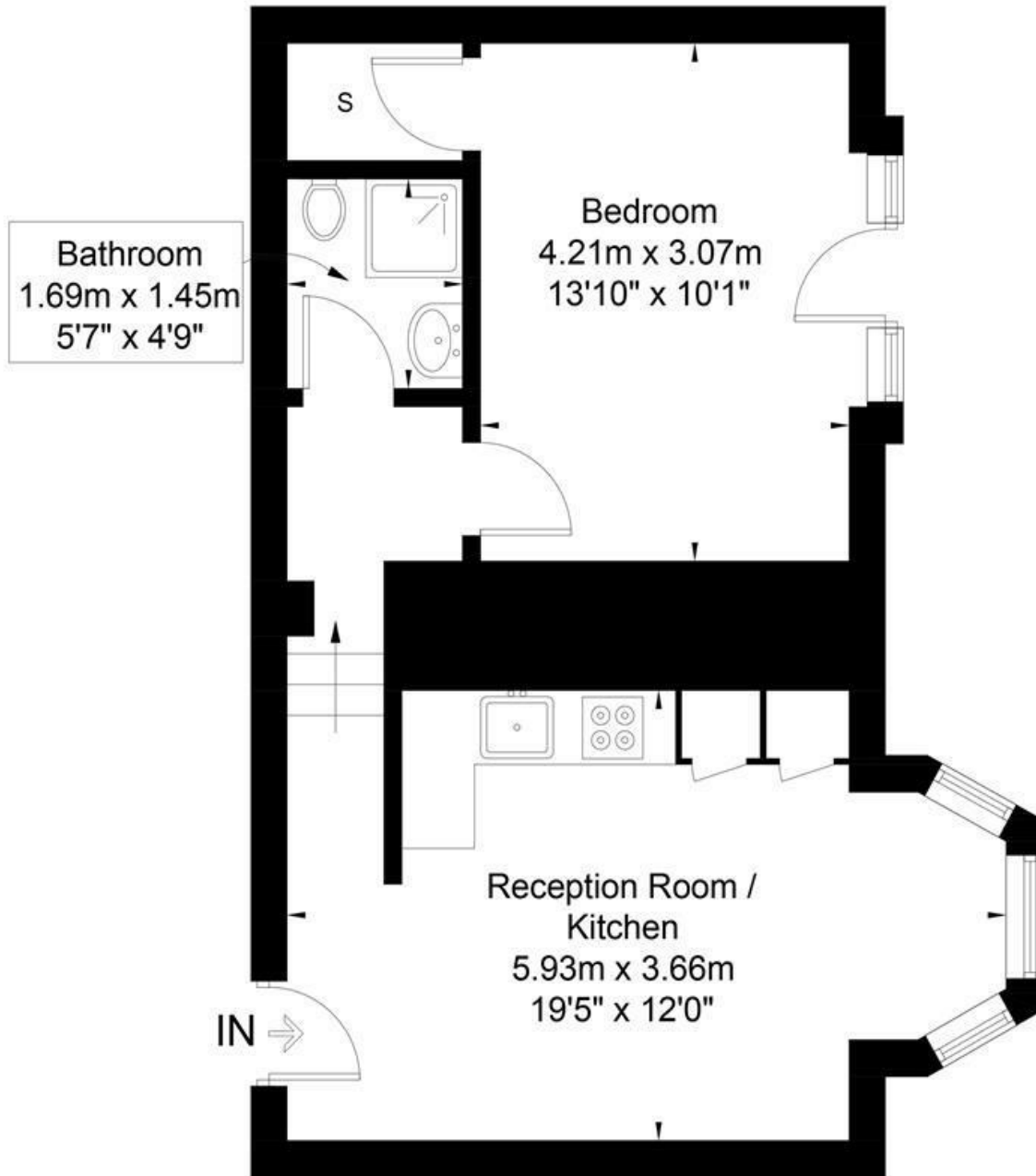
Set within a stunning detached house with period features  
Bright and spacious reception room  
Three piece bathroom  
Walking distance to Highgate Underground (Northern Line zone 2) and Crouch Hill Overground

Kentish Town Office 020 7485 0400

# Crescent Road



Approximate Gross Internal Area = 44.2 sq m / 476 sq ft



## Raised Ground Floor

Illustration for identification purposes only, measurements are approximate, not to scale. FloorplansUsketch.com © 2017 (ID 364829)

The particulars do not constitute part of an offer or contract. The particulars, including text, photographs and plans, are for the guidance only of prospective purchasers/tenants and must not be relied upon as statements of fact. The descriptions provided therein represent the opinion of the author and whilst given in good faith should not be construed as statements of fact. Nothing in these particulars shall be deemed a statement that the property is in good condition or otherwise or that any services or facilities are in good working order. All measurements are approximate