



Westbere Road NW2

Parkheath  
*Sold on Service*





Westbere Road  
NW2

**£775,000**

Superb 3 bedroom, 2 bathroom garden apartment

Tastefully refurbished throughout by current owners

Fantastic blend of contemporary and period features

920 sq ft / 86 sq m

Stunning 40' south facing rear garden

Separate private access to garden

Large cellar storage area

Striking 16'9" master bedroom bedroom with en-suite and built in storage

22" open plan kitchen/reception leading to garden

Close to transport links and all amenities

Belsize Park/Hampstead  
208 Haverstock Hill  
NW3 2AG  
Sales 020 7431 1234  
Lettings 020 7431 3104  
[nw3@parkheath.com](mailto:nw3@parkheath.com)

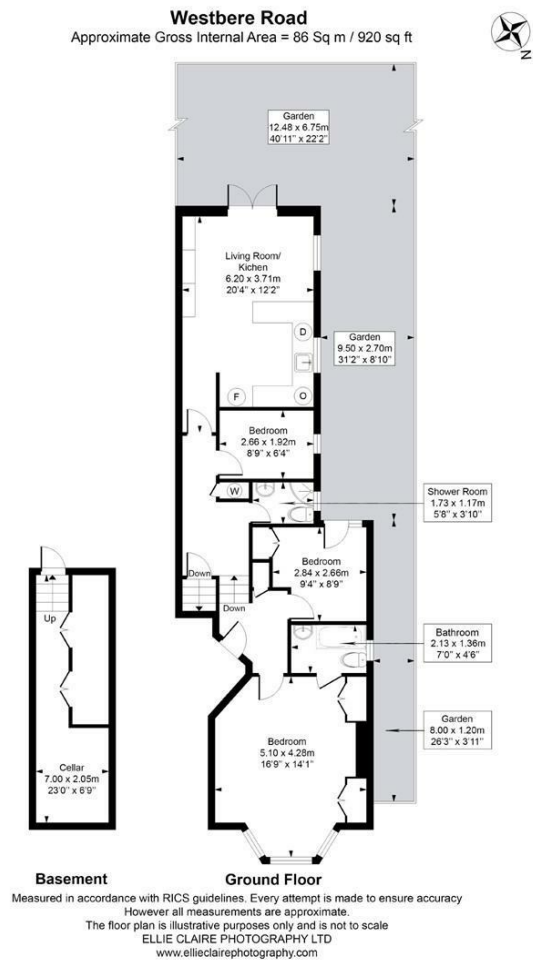
South/West Hampstead  
192 West End Lane  
NW6 1SG  
Sales & Lettings  
Tel 020 7794 7111  
[192@parkheath.com](mailto:192@parkheath.com)

Kensal Rise  
54-56 Chamberlayne Rd  
NW10 3JH  
Tel 020 8960 4845  
[kensal@parkheath.com](mailto:kensal@parkheath.com)

Property Management  
192 West End Lane  
NW6 1SG  
020 7433 6174  
[pm@parkheath.com](mailto:pm@parkheath.com)

[www.parkheath.com](http://www.parkheath.com)

**Parkheath**  
*Sold on Service*



The particulars do not constitute part of an offer or contract. The particulars, including text, photographs and plans, are for the guidance only of prospective purchasers/tenants and must not be relied upon as statements of fact. The descriptions provided therein represent the opinion of the author and whilst given in good faith should not be construed as statements of fact. Nothing in these particulars shall be deemed a statement that the property is in good condition or otherwise or that any services or facilities are in good working order. All measurements are approximate