

Parkheath

Sold on Service

Fairhazel Gardens NW6

£2,350 PCM (£542 per week) - Camden Band E



Attractive raised ground floor flat

High ceilings

2 bedrooms (1 double & 1 single/office)

Large main bedroom with fitted storage

0.3 miles to Finchley Road underground

Set within period conversion

Reception room with bay window, built in units and shelving

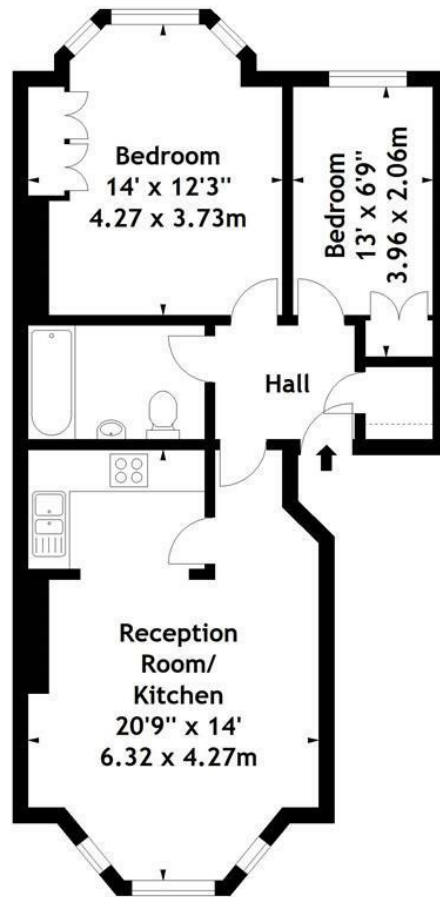
Fitted kitchen with serving window to reception room

South Hampstead conservation area

EPC energy rating C / Council tax: Camden band E

West Hampstead Office 020 7794 7111

Fairhazel Gardens, NW6
Approx. Gross Internal Area
621 Sq Ft - 57.69 Sq M



Ground Floor

Measured in accordance with RICS guidelines. Every attempt is made to ensure accuracy, however all measurements are approximate. This floor plan is for illustrative purposes only and is not to scale.
© Datography Ltd 2014
Photographs * Floorplans * Virtual Tours
Tel: 0845 643 4401 www.datography.com

The particulars do not constitute part of an offer or contract. The particulars, including text, photographs and plans, are for the guidance only of prospective purchasers/tenants and must not be relied upon as statements of fact. The descriptions provided therein represent the opinion of the author and whilst given in good faith should not be construed as statements of fact. Nothing in these particulars shall be deemed a statement that the property is in good condition or otherwise or that any services or facilities are in good working order. All measurements are approximate