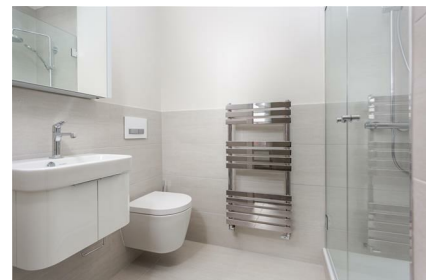


Parkheath

Sold on Service

Aberdare Gardens NW6

£3,650 PCM (£842 per week) - Camden Band G



Stunning 2nd floor apartment

3 bathrooms (all en-suite)

Fully fitted and integrated open plan kitchen

Wooden floors to reception room & carpeted in the bedrooms

10 minute walk to Finchley Road underground

3 double bedrooms

Reception/dining room

Excellent internal fitted storage

1161 Sq Ft / 107.9 Sq M

EPC energy rating D / Council tax: Camden band G

West Hampstead Office 020 7794 7111

Aberdare Gardens

Approximate Gross Internal Area = 107.9 sq m / 1161 sq ft

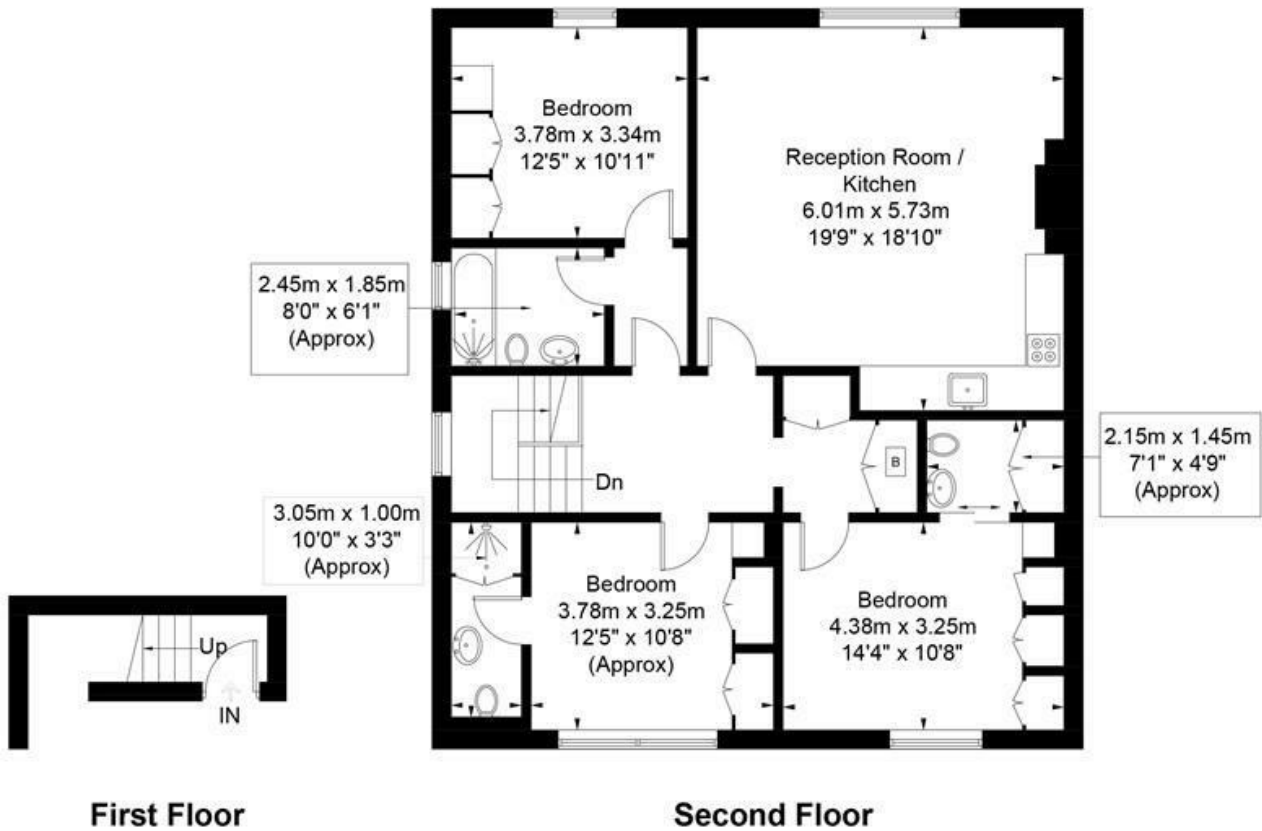


Illustration for identification purposes only, measurements are approximate, not to scale. FloorplansUsketch.com © 2019 (ID516856)
ELLIE CLAIRE PHOTOGRAPHY LTD

The particulars do not constitute part of an offer or contract. The particulars, including text, photographs and plans, are for the guidance only of prospective purchasers/tenants and must not be relied upon as statements of fact. The descriptions provided therein represent the opinion of the author and whilst given in good faith should not be construed as statements of fact. Nothing in these particulars shall be deemed a statement that the property is in good condition or otherwise or that any services or facilities are in good working order. All measurements are approximate