



Town • Country • Coast



Tamar Close

Bere Alston, Yelverton

Price Guide £250,000



3



1



1



1

Tamar Close

Bere Alston, Yelverton

Quietly positioned within a cul-de-sac in the popular village of Bere Alston, we are delighted to offer this well presented three bedroom home to the market.

The property offers generous and practical spaces inside and out with a functional, light and airy feel within making this an ideal family home for those with growing families or those wanting to downsize to a ready to go home.

You access the property across a small lawned area and the driveway, providing parking for multiple vehicles as well as access to the garage. Entering the property you're greeted in the hallway with downstairs cloakroom and access to first floor and other accommodation. The kitchen sits to face the front and is a good size, offering ample storage with wall and base units and integrated appliances. To the rear of the house sits the living/ dining room. This is a large room and offers great flexibility for configuration along with space for furniture. Double patio doors lead out to the rear garden.

There is also an understairs storage cupboard in the living room which has a further doorway to provide access to the garage.

The first floor boasts three bedrooms, two of which are generous double bedrooms, the third is a good sized single room or ideal space for a home office, dressing room or nursery.

The family bathroom offers low level flush WC, wash hand basin and bath with overhead shower.

There is also a large storage cupboard above the stairs accessed from the landing.

Externally, the property has a private and enclosed rear garden, with a patio space as well as a lawn to providing a low maintenance and enjoyable space across all times of the year.





Entrance Hall

9'00 x 3'00 (2.74m x 0.91m)

WC/Cloakroom

5'3 x 2'10 (1.60m x 0.86m)

Kitchen

9'09 x 9'04 (2.97m x 2.84m)

Living / Dining Room

17'04 x 15'08 (5.28m x 4.78m)

Garage

16'8 x 9'2 (5.08m x 2.79m)

Bedroom One

14'00 x 8'08 (4.27m x 2.64m)

Bedroom Two

13'01 x 9'04 (3.99m x 2.84m)

Bedroom Three

8'10 x 6'08 (2.69m x 2.03m)

Landing

11'10 x 2'09 (3.61m x 0.84m)

Bathroom

6'00 x 5'10 (1.83m x 1.78m)

Services

Mains electricity, gas, water (metered) and drainage.

EPC

71/C

Council Tax Band

C

Tenure

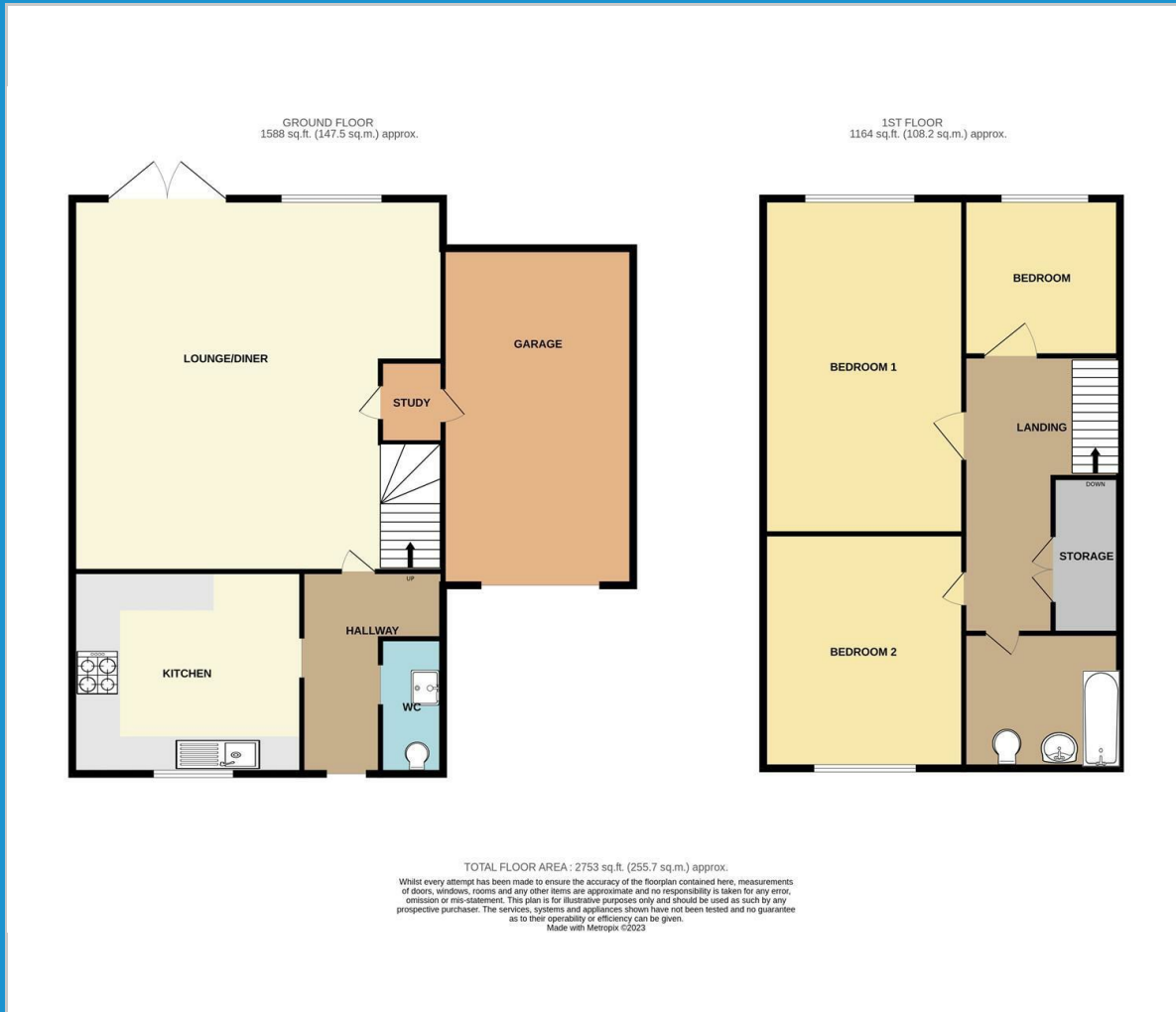
Freehold

Situation

Bere Alston is a village in West Devon which has a regular bus service to Tavistock and also boasts many amenities including a primary school, post office butchers, Co-Op, public house, doctor's surgery and a train station which links the village to Plymouth. The Bere Peninsula is located between the Ocean City of Plymouth and the Ancient Stannary Town of Tavistock.



Floor Plan



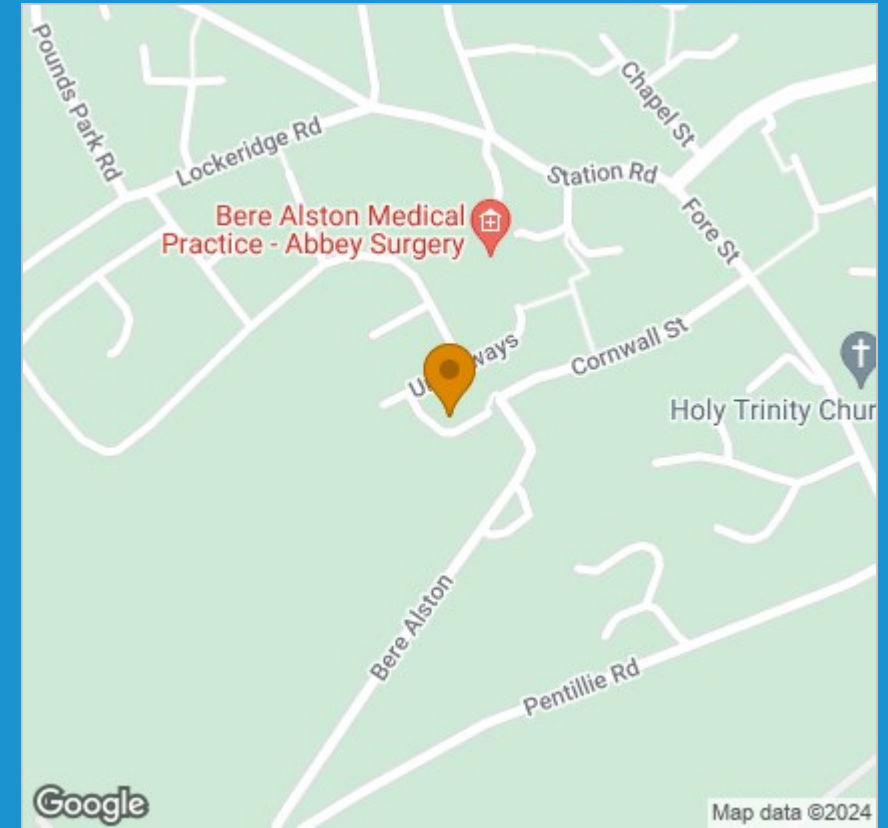
Viewing

Please contact our View Property Tavistock Office on 01822 614614 if you wish to arrange a viewing appointment for this property or require further information.

These particulars, whilst believed to be accurate are set out as a general outline only for guidance and do not constitute any part of an offer or contract. Intending purchasers should not rely on them as statements of representation of fact, but must satisfy themselves by inspection or otherwise as to their accuracy. No person in this firm's employment has the authority to make or give any representation or warranty in respect of the property.

Unit 1, The Old Dairy Paddons Row, Tavistock, Devon, PL19 0HF
Tel: 01822 614614 Email: Tavy@viewproperty.org.uk www.viewproperty.org.uk

Area Map



Energy Efficiency Graph

