



Town • Country • Coast



Honicombe Park
Callington

Price Guide £110,000



4



2



1



Honcombe Park

Callington

NO ONWARD CHAIN! The Dartmoor lodges are peacefully tucked away at the bottom part of the popular Honcombe Holiday park and this particular property is a great sized home away from home! Be that for yourself or the family or as an investment, the property suits brilliantly as the accommodation boasts a modern open plan kitchen/ dining and living room with built in appliances; downstairs shower room with WC and basin; four double bedrooms and a modern family bathroom upstairs with a bath with shower over, WC and basin.

This lodge is being sold fully furnished so ready to go as a holiday let for investors or a homely retreat for people looking for themselves.

The lodge also benefits from its upgraded heating system with central heating throughout.

Outside there is a patio area, perfect for alfresco dining and communal gardens surround the property. There is communal parking available with in easy reach of the property.

This particular lodge benefits from its fantastic position near the tennis courts and play park with fields neighbouring the property as well as a stunning view across the rolling hills of the Tamar Valley, a real must see!





Entrance Hall

Living/Dining Room
19'0 x 10'4 (5.79m x 3.15m)

Kitchen
8'6 x 8'3 (2.59m x 2.51m)

Bedroom 3
10'5 x 8'8 (3.18m x 2.64m)

Bedroom 4
12'0 x 8'2 (3.66m x 2.49m)

Bedroom 1
13'0 x 11'8 (3.96m x 3.56m)

Bedroom 2
13'4 x 9'2 (4.06m x 2.79m)

Tenure
Leasehold - 999 years from 1988.

Services

Mains electricity, drainage and water.

EPC

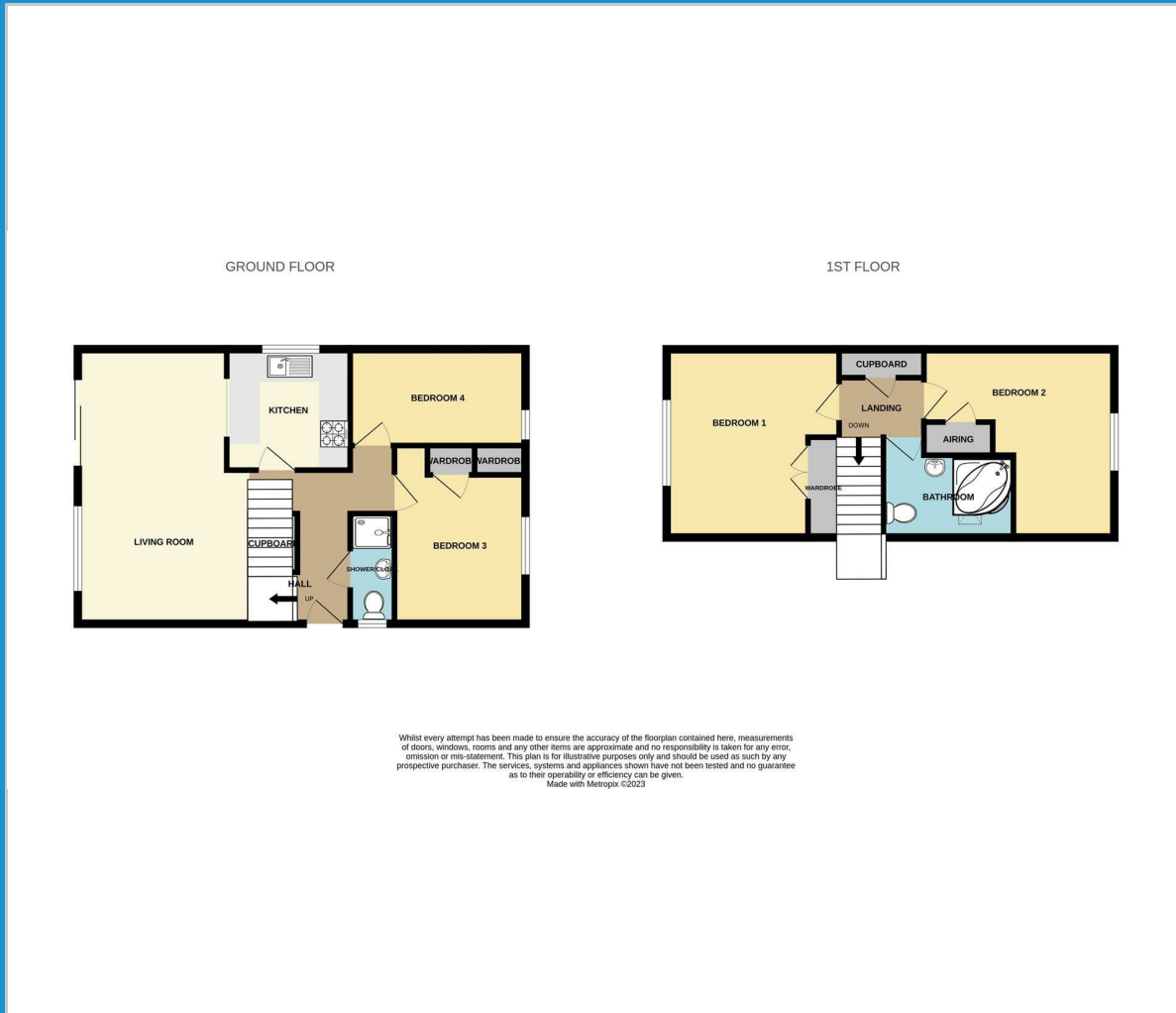
Exempt

Situation

Honicombe is based in the beautiful Tamar Valley AONB which stretches from Bodmin to Dartmoor and from the beaches of East Cornwall to the pretty towns of West Devon. There is plenty to see and do for the whole family. Everyone from the thrill seekers, beach babies and wildlife lovers will find something to suit them right on our doorstep.



Floor Plan



Viewing

Please contact our View Property Tavistock Office on 01822 614614 if you wish to arrange a viewing appointment for this property or require further information.

These particulars, whilst believed to be accurate are set out as a general outline only for guidance and do not constitute any part of an offer or contract. Intending purchasers should not rely on them as statements of representation of fact, but must satisfy themselves by inspection or otherwise as to their accuracy. No person in this firm's employment has the authority to make or give any representation or warranty in respect of the property.

Unit 1, The Old Dairy Paddons Row, Tavistock, Devon, PL19 0HF
Tel: 01822 614614 Email: Tavy@viewproperty.org.uk www.viewproperty.org.uk

Area Map



Energy Efficiency Graph

