



Town • Country • Coast



Maynard Park

Bere Alston, Yelverton

Offers In Excess Of £220,000



2



1



2



3

Maynard Park

Bere Alston, Yelverton

****VIDEO WALKTHROUGH AVAILABLE****

Situated within a peaceful and desirable cul-de-sac in the popular village of Bere Alston, we are delighted to offer this two bedroom bungalow to the market with no onward chain.

This home boasts a wealth of space, both inside and out and offers a private and generous garden with off road parking for multiple vehicles.

Entering from the front into the hallway, two double bedrooms sit to the left - bedroom two with a lookout to the front garden and bedroom one looking out into the rear garden. Both bedrooms are a similar and generous size with ample space for furniture. The shower room offers a WC, wash hand basin and corner shower cubicle.

The living room sits to the front of the property, with a focal fire place and large uPVC window to the front creating a cosy space with natural lighting in abundance. To the rear sits the kitchen and extended dining space, with a door and multiple windows providing a charming out look and access to the rear garden.

The external space currently offers a level lawn to the front of the property, alongside a generous driveway. The rear garden boasts a level lawn with shrubs and a feature pond as well access to the side and the garage. There is also a patio area to the rear of the garden as well as a shed.

Viewings are highly recommend to appreciate this home and available by appointment only.





Hallway

14'4 x 3'4 (4.37m x 1.02m)

Living Room

12'4 x 11'7 (extending to 14'4) (3.76m x 3.53m (extending to 4.37m))

Kitchen

9'4 x 8'2 (2.84m x 2.49m)

Dining area/Conservatory

9'99 x 7'9 (2.74m x 2.36m)

Shower Room

6'4 x 5'4 (1.93m x 1.63m)

Bedroom 1

10'4 x 9'9 (3.15m x 2.97m)

Bedroom 2

10'4 x 9'9 (3.15m x 2.97m)

Tenure

Freehold

Services

TBC

Council Tax Band

B

EPC

D/57

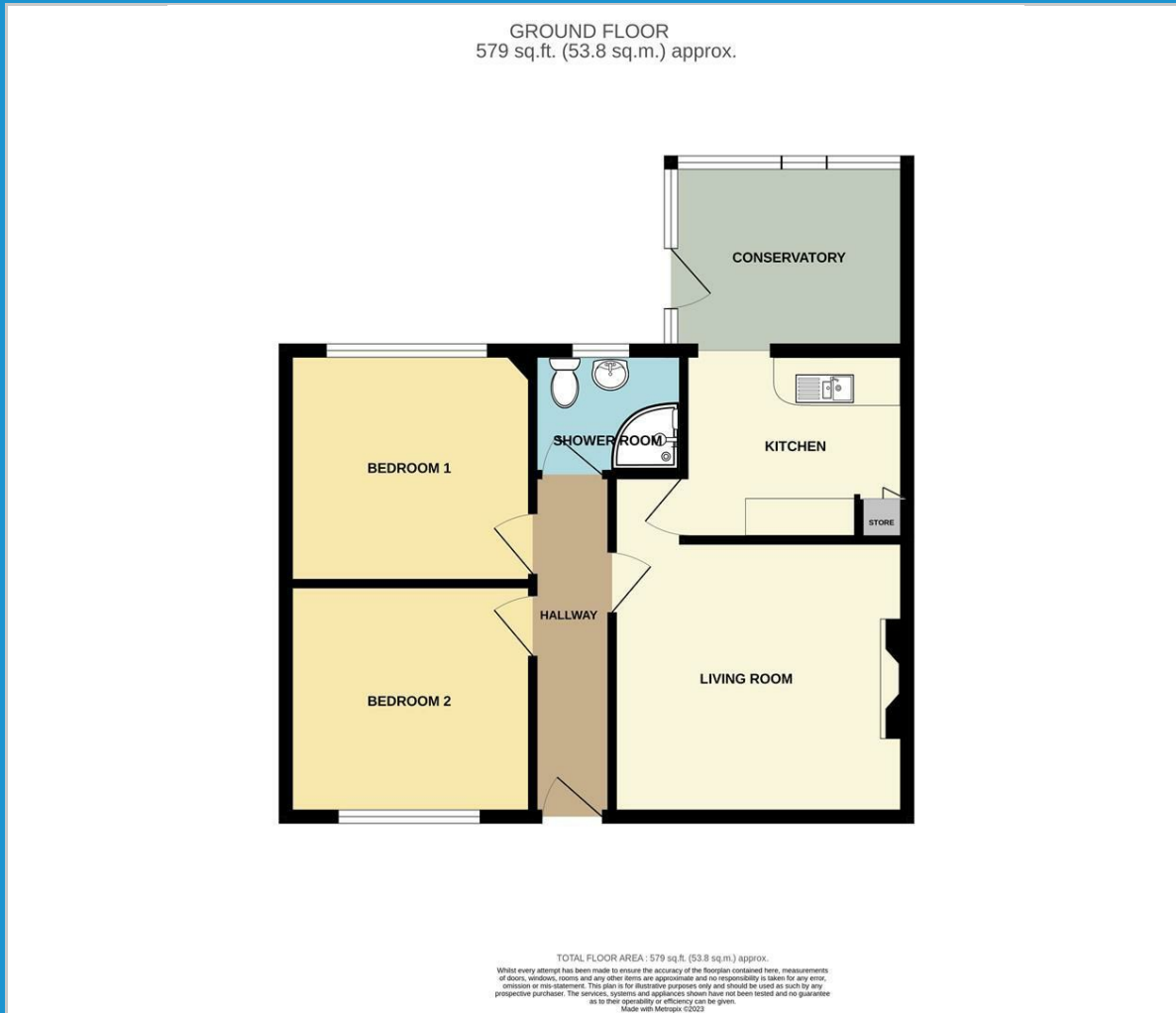
Situation

Bere Alston is a village in West Devon which has a regular bus service to Tavistock and also boasts many amenities including a primary school, post office, butchers, Co-Op, public house, doctor's surgery and a train station which links the village to Plymouth. The Bere Peninsula is located between the Ocean City of Plymouth and the Ancient Stannary Town of Tavistock.

Directions

Enter Bere Alston on the B3257 (Bedford Street). At the T junction turn right onto Station Road. After a short distance turn left into Lockeridge Road and then left into Maynard Park. At the T junction turn left to stay on Maynard Park and then take the next left into the cul-de-sac, where the property can be found on your right.

Floor Plan



Viewing

Please contact our View Property Tavistock Office on 01822 614614 if you wish to arrange a viewing appointment for this property or require further information.

These particulars, whilst believed to be accurate are set out as a general outline only for guidance and do not constitute any part of an offer or contract. Intending purchasers should not rely on them as statements of representation of fact, but must satisfy themselves by inspection or otherwise as to their accuracy. No person in this firm's employment has the authority to make or give any representation or warranty in respect of the property.

Unit 1, The Old Dairy Paddons Row, Tavistock, Devon, PL19 0HF
Tel: 01822 614614 Email: Tavy@viewproperty.org.uk www.viewproperty.org.uk

Area Map



Energy Efficiency Graph

