



Town • Country • Coast



## Dartmoor Lodge

Honcombe Park, Callington

Offers In Excess Of £100,000



4



2



1





## Dartmoor Lodge

Honcombe Park, Callington

The Dartmoor lodges are peacefully tucked away at the bottom part of the popular Honcombe Holiday park and this particular property is a great sized home away from home! Be that for yourself or the family or as an investment, the property suits brilliantly as the accommodation boasts a modern open plan kitchen/ dining and living room with built in appliances; downstairs shower room with WC and basin; four double bedrooms and a modern family bathroom upstairs with a bath, WC and basin.

Outside there is a patio area, perfect for alfresco dining and communal gardens surrounding the property. There is communal parking available.







**Entrance hall**

**Kitchen**

8'6 x 8'2 (2.59m x 2.49m)

**Living/ Dining Room**

18'11 x 11'10 (5.77m x 3.61m)

**Shower room**

**Master Bedroom**

12'11 x 12 (3.94m x 3.66m)

**Bedroom Two**

13'4 x 12'11 (4.06m x 3.94m)

**Bedroom Three**

10'4 x 8'11 (3.15m x 2.72m)

**Bedroom Four**

12'1 x 8'2 (3.68m x 2.49m)

**Bathroom**

**Tenure**

**Services**

**Council Tax Band**

**EPC**

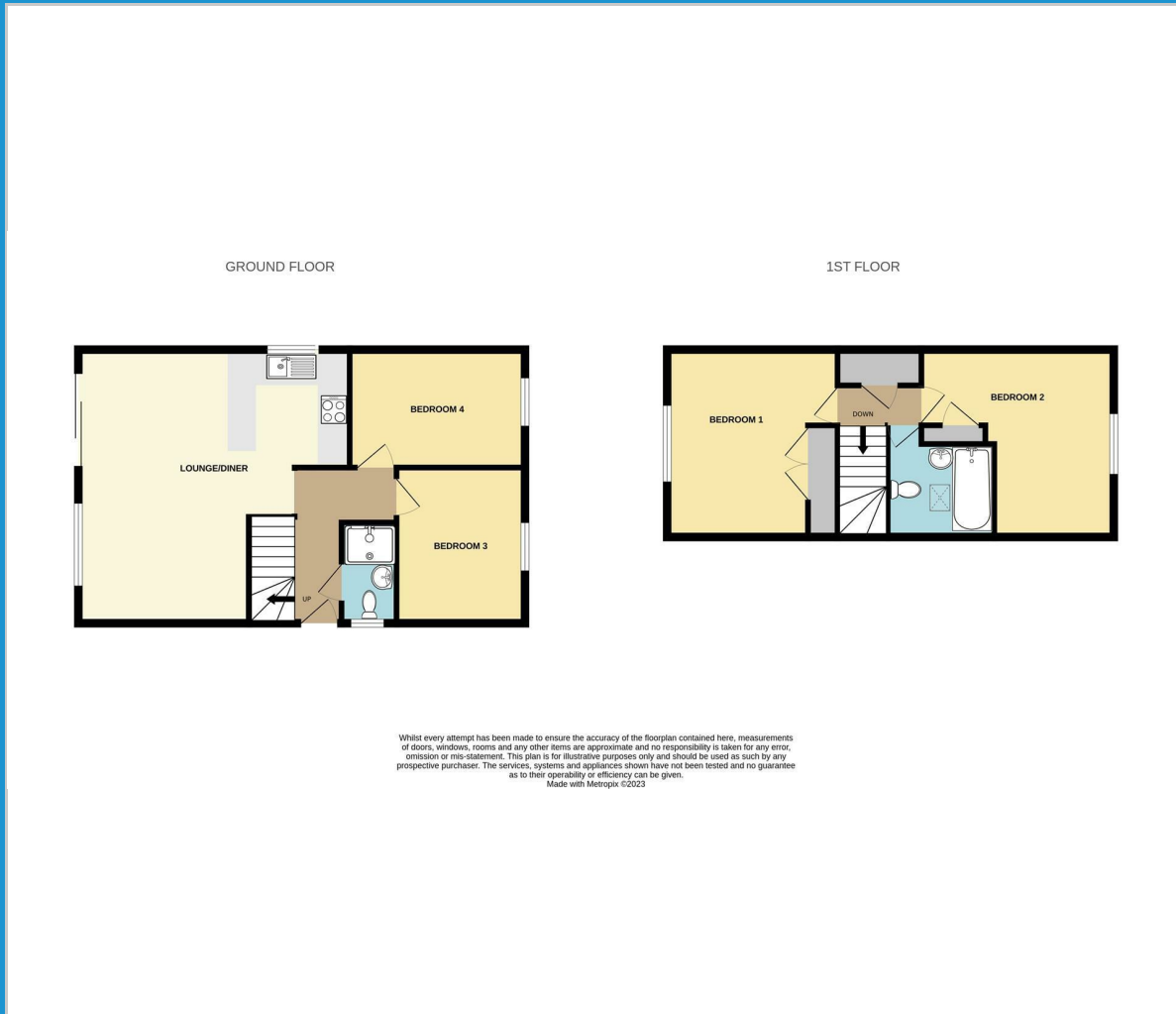
**Situation**

**Directions**





## Floor Plan



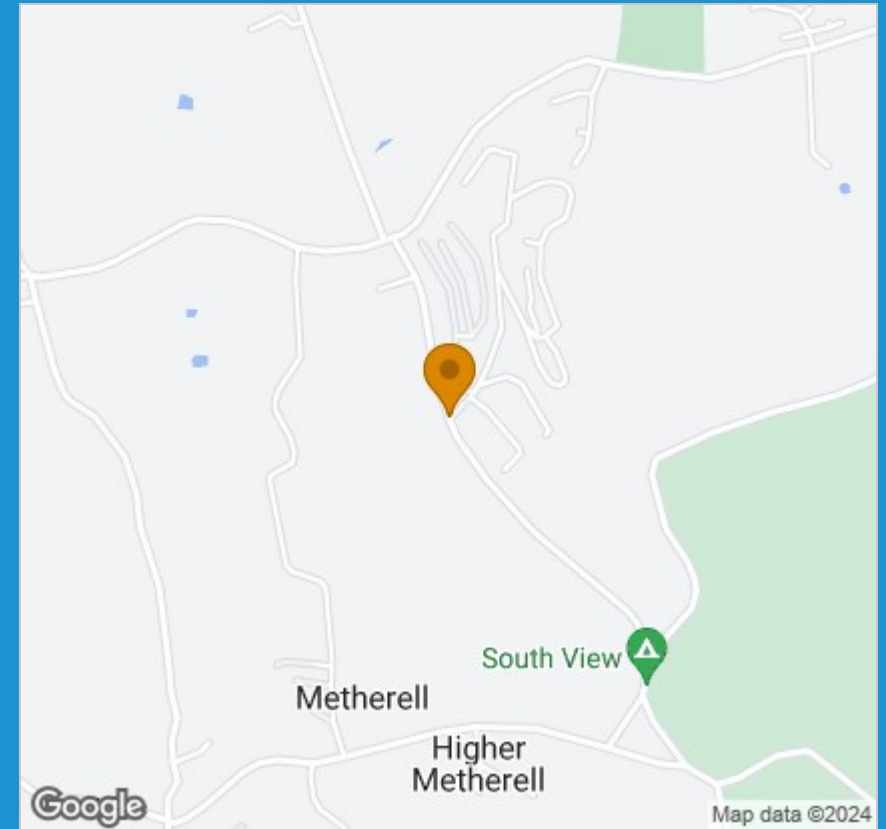
## Viewing

Please contact our View Property Tavistock Office on 01822 614614 if you wish to arrange a viewing appointment for this property or require further information.

These particulars, whilst believed to be accurate are set out as a general outline only for guidance and do not constitute any part of an offer or contract. Intending purchasers should not rely on them as statements of representation of fact, but must satisfy themselves by inspection or otherwise as to their accuracy. No person in this firm's employment has the authority to make or give any representation or warranty in respect of the property.

Unit 1, The Old Dairy Paddons Row, Tavistock, Devon, PL19 0HF  
 Tel: 01822 614614 Email: Tavy@viewproperty.org.uk www.viewproperty.org.uk

## Area Map



## Energy Efficiency Graph

