



Town • Country • Coast

Sold by
stc

view
property
Town • Country • Coast
www.viewproperty.org.uk
T:01822 614614

0.99% including
No hidden

Foundry Mews
, Tavistock

Guide Price £189,500



view
property
Town • Country • Coast
Always available
If we are not in the office,
please contact us on
01822 614614

view property
Town • Country • Coast

Foundry Mews

, Tavistock

NO ONWARD CHAIN - This beautiful top floor apartment is located in an enviable location with the town centre within level walking distance. There are two double bedrooms and a well appointed bathroom. The open plan kitchen / living room is a bright area with plenty of space for a table and lounge furniture. There is an allocated parking space and two visitor spaces for guests. To the rear of the building is a communal garden area as well as a bin store and bike shed for the residents to utilise. Double doors open to a Juliet balcony in the living area allowing fresh air to come in whilst taking in the rooftop views with Dartmoor in the distance.





Entrance Hall

Kitchen / Living Area
20'2" x 14'3" (6.15 x 4.34)

Bedroom 1
14'3" x 8'6" (4.34 x 2.59)

Bedroom 2
10'9" x 8'9" (3.28 x 2.67 (3.27 x 2.66))

Bathroom

Tenure

Council Tax Band
B (B)

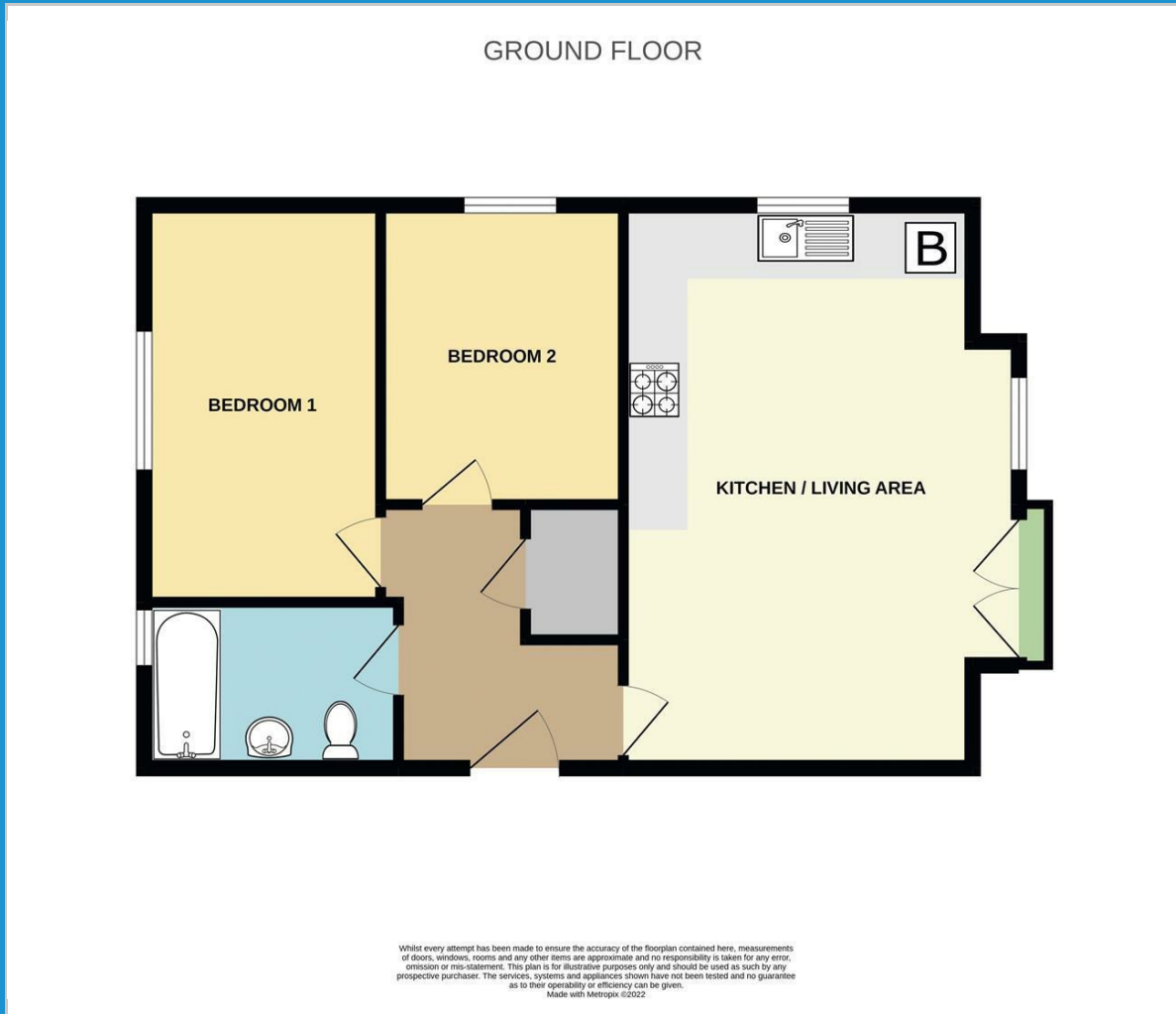
EPC
C/259'2" (C/79)

Services

Mains Water. Electricity. Gas & Drainage



Floor Plan



Viewing

Please contact our View Property Tavistock Office on 01822 614614 if you wish to arrange a viewing appointment for this property or require further information.

These particulars, whilst believed to be accurate are set out as a general outline only for guidance and do not constitute any part of an offer or contract. Intending purchasers should not rely on them as statements of representation of fact, but must satisfy themselves by inspection or otherwise as to their accuracy. No person in this firm's employment has the authority to make or give any representation or warranty in respect of the property.

Unit 1, The Old Dairy Paddons Row, Tavistock, Devon, PL19 0HF
 Tel: 01822 614614 Email: Tavy@viewproperty.org.uk www.viewproperty.org.uk

Area Map



Energy Efficiency Graph

