





Guide price £475,000

4 Pearmain Parade

Waterlooville, PO7 3AJ

- FIVE BEDROOMS
- TWO RECEPTION ROOMS
- ENSUITE TO MASTER
- DETACHED GARAGE
- NHBC REMAINING
- DETACHED HOUSE
- KITCHEN/DINER/UTILITY ROOM
- TWO FAMILY BATHROOMS
- PARKING FOR 3/4 CARS
- WEST FACING BALCONY

*** Guide Price £475,000 - £500,000 *** One of the largest homes built by Bloor in 2016, during the first phase of their journey to create Berewood. Presented internally to 'show home standard', perfect for those looking for a substantial family home. Offering flexible living set over three floors, which provide five Bedrooms, two large Reception rooms, a modern Kitchen/Diner (refitted last year) with Utility area, Ensuite and dressing area to master and two family Bathrooms. With Detached Garage and parking for Three cars externally, an early viewing is essential.



Welcome to luxury living at its finest in this impressive five-bedroom detached house, meticulously designed and built by Bloor Homes in 2016, offering a modern lifestyle with elegant features and spacious interiors.

Set over three floors, this residence boasts versatility and comfort, with two reception rooms providing ample space for relaxation and entertaining. The ground floor features a stylish kitchen/diner, completely refitted last year, offering a contemporary space for culinary delights and family gatherings.

Step outside onto the west-facing balcony, where picturesque views and warm sunshine create a serene backdrop for morning coffees or evening relaxation.

The second floor hosts the master bedroom complete with an ensuite bathroom and a fitted wardrobe area, providing a luxurious retreat. Two additional family bathrooms ensure convenience and comfort for all occupants.

Outside, the enclosed rear garden offers privacy and tranquillity, ideal for outdoor activities and al fresco dining. A detached garage and parking for three cars provide ample space for vehicles and storage needs.

With the reassurance of NHBC remaining, this property offers peace of mind and quality craftsmanship.

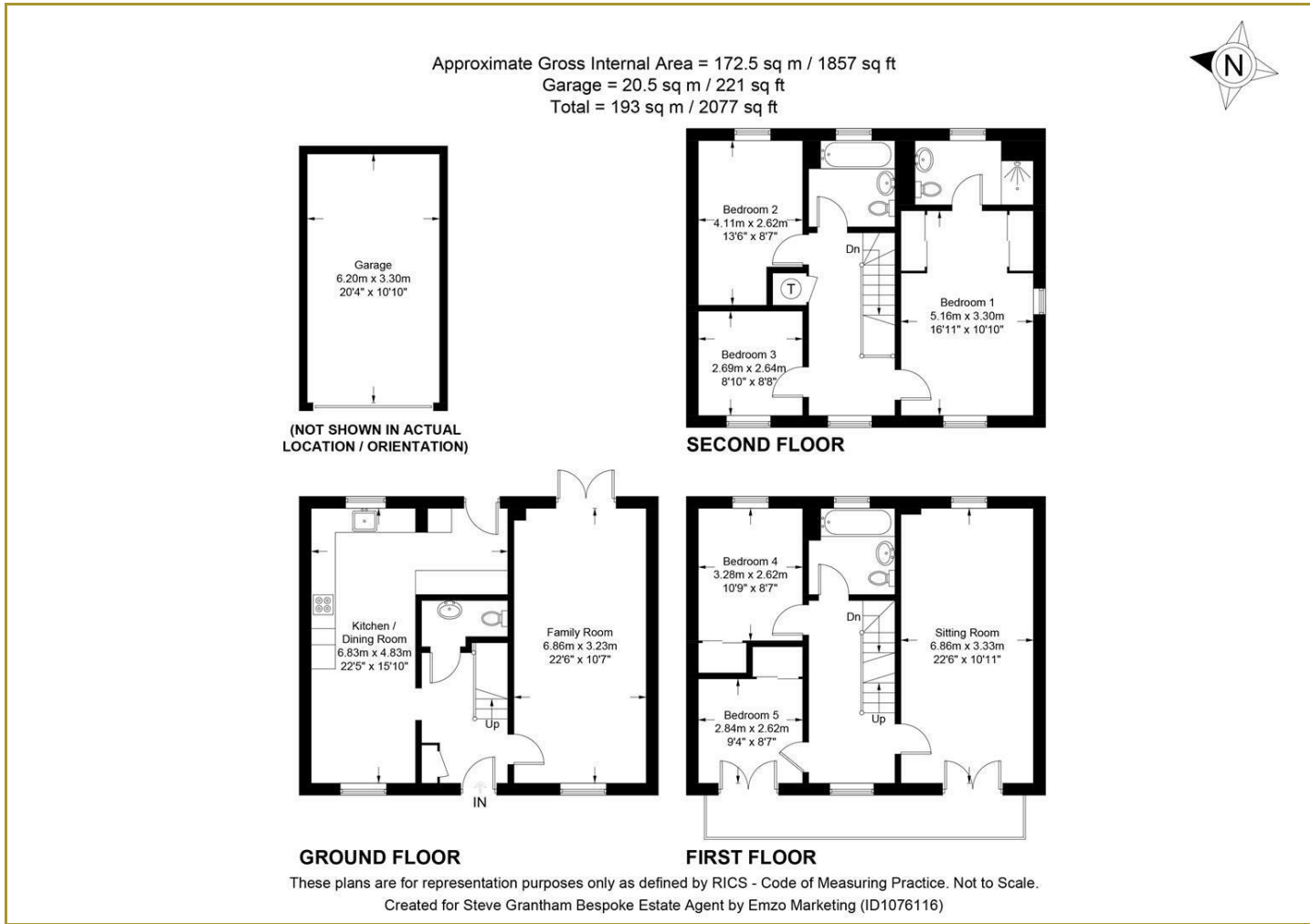
In summary, this five-bedroom detached house is more than just a home; it's a testament to modern luxury living. From the stylish interiors to the west-facing balcony and spacious layout, every detail has been carefully considered to create a residence that exceeds expectations. Welcome to a place where elegance meets functionality, offering a lifestyle of comfort and sophistication for the discerning homeowner.



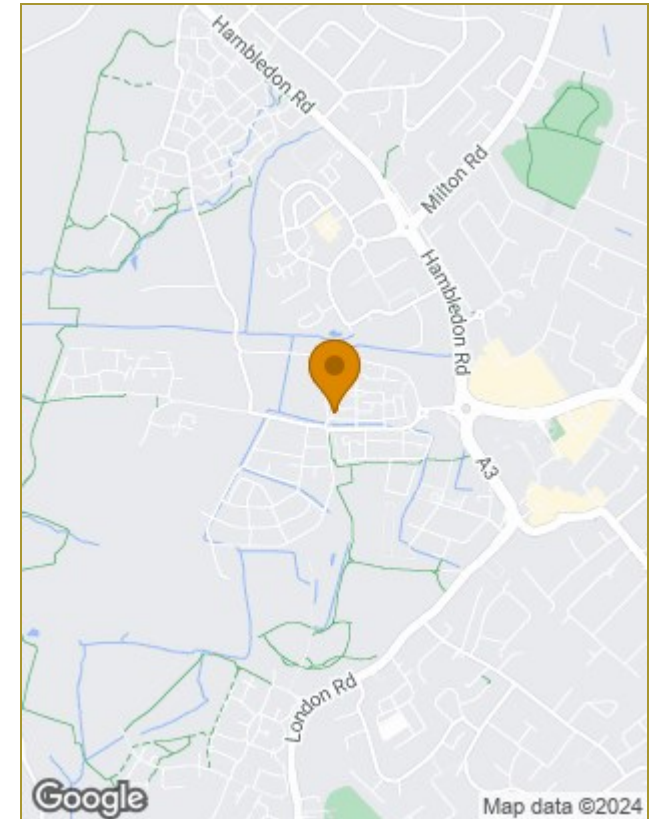




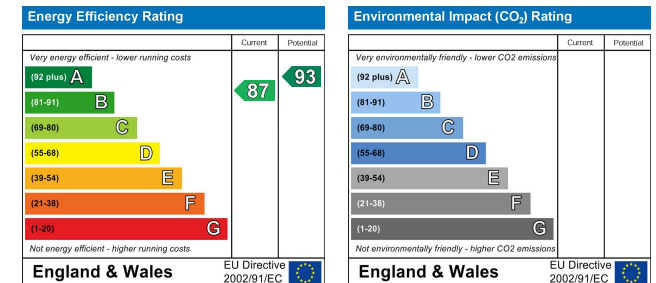
Floor Plans



Location Map



Energy Performance Graph



Viewing

Please contact our Steve Grantham Bespoke Office on 02393 090015 if you wish to arrange a viewing appointment for this property or require further information.

The particulars are set out as a general outline only for the guidance of intended purchasers or lessees, and do not constitute, any part of a contract. Nothing in these particulars shall be deemed to be a statement that the property is in good structural condition or otherwise nor that any of the services, appliances, equipment or facilities are in good working order. Purchasers should satisfy themselves of this prior to purchasing.