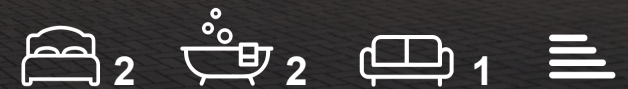




609 Westmount Road  
St. Helier, Jersey, JE2 3BJ

**£515,000**



## 609 Westmount Road

St. Helier, Jersey, JE2 3BJ

A Prime Opportunity: Spacious Two-Bedroom Apartment

This 6th-floor apartment offers an excellent entry into the property market or a promising investment opportunity. Positioned in the quieter rear section of the Westmount development, the interior boasts a contemporary design with a stylish kitchen seamlessly connecting to a generously sized lounge/diner, while the balcony provides peaceful outdoor space.

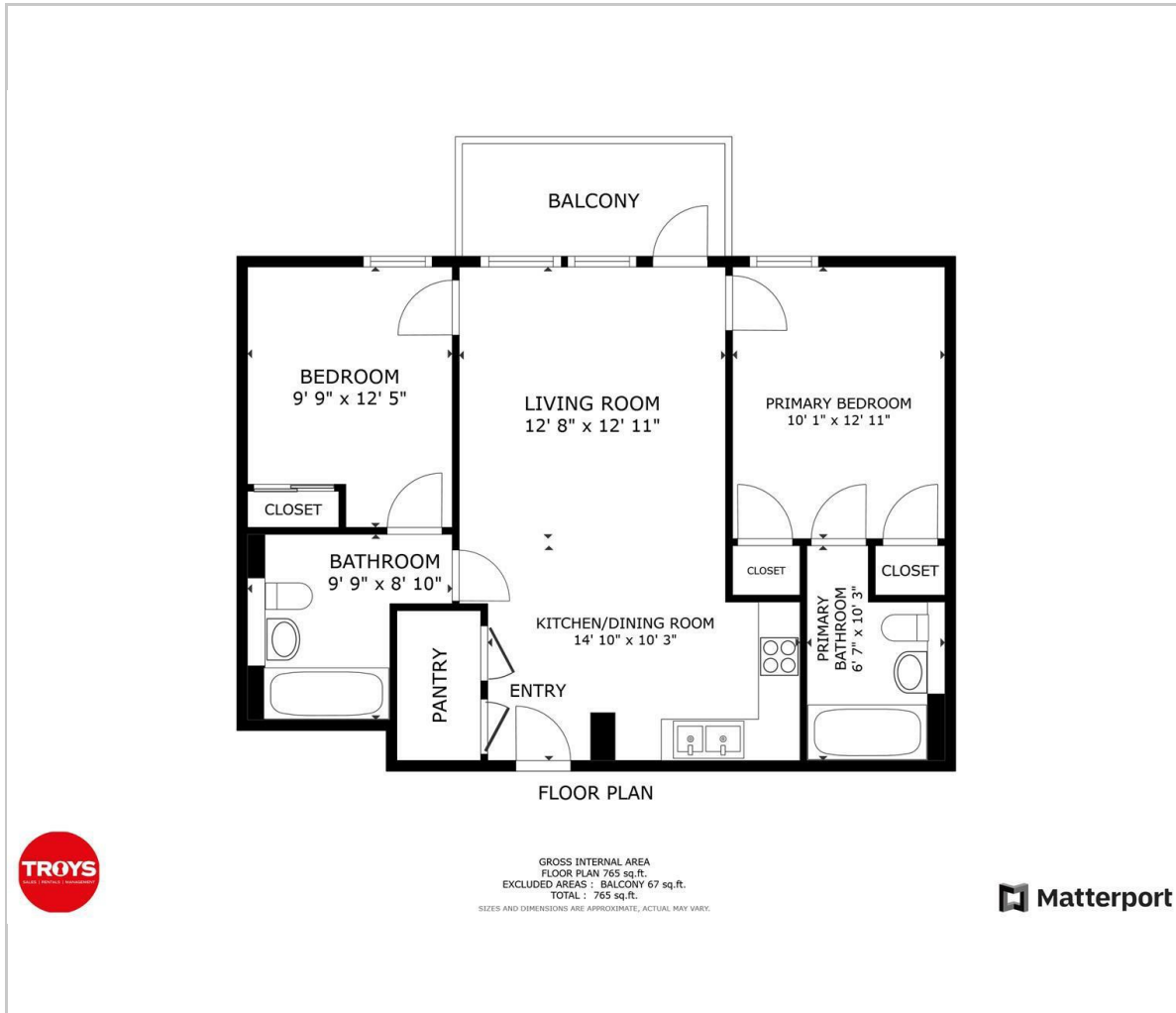
Both double bedrooms feature built-in wardrobes and en-suite bathrooms, with one serving as a Jack & Jill access for guests. Located on the outskirts of town, the property combines modern living with proximity to vibrant amenities.

Additionally, the complex offers an on-site gym and covered parking for one car. With communal rooftop terrace, park, and beach nearby, it provides convenience and leisure in one package. Viewing is highly recommended.





## Floor Plan



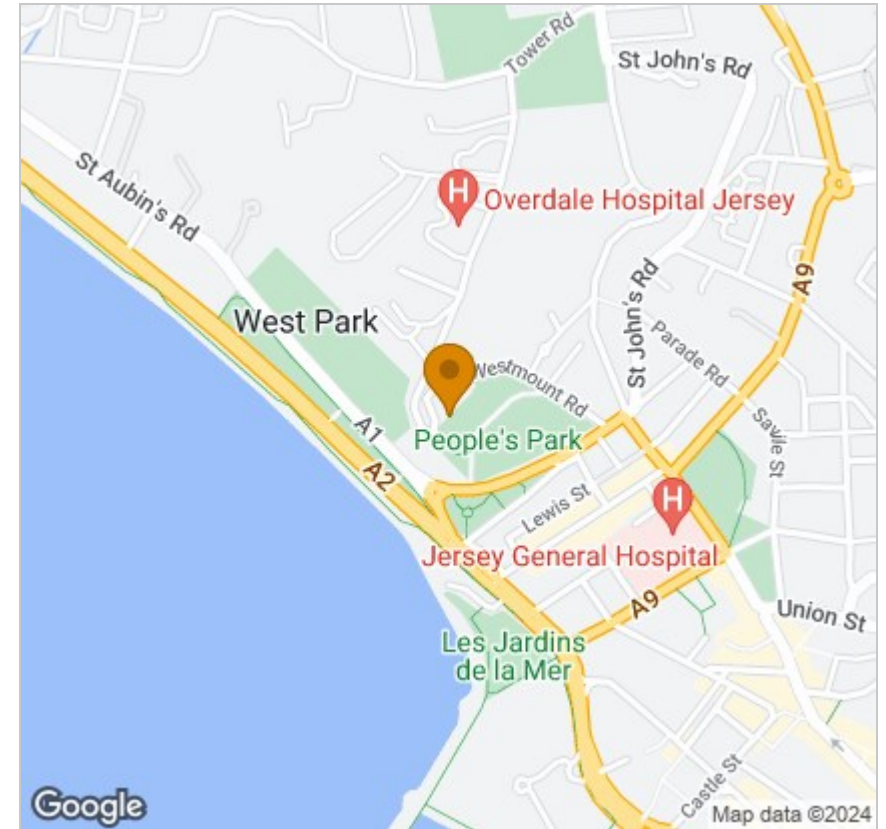
## Viewing

Please contact our Troys Estate Agency Ltd Office on 01534 607070 if you wish to arrange a viewing appointment for this property or require further information.

These particulars, whilst believed to be accurate are set out as a general outline only for guidance and do not constitute any part of an offer or contract. Intending purchasers should not rely on them as statements of representation of fact, but must satisfy themselves by inspection or otherwise as to their accuracy. No person in this firm's employment has the authority to make or give any representation or warranty in respect of the property.

10 Sand Street, St Helier, Jersey, JE2 3QF  
Tel: 01534 607070 Email: duty@troysjsy.com

## Area Map



## Energy Efficiency Graph

