



Apt 1, Bank Place 2 Charing Cross
St Aubin, Jersey, JE3 8AA

Asking Price £645,000



Apt 1, Bank Place 2 Charing

St Aubin, Jersey, JE3 8AA

Welcome to this charming duplex apartment located in the picturesque village of St Aubin. This property boasts a delightful layout with one reception room, two cosy bedrooms, and a modern bathroom, perfect for a small family or professionals looking for a comfortable living space.

One of the standout features of this property is the clever use of space, with the layout arranged over two floors, providing a sense of privacy and separation between the living and sleeping areas. The duplex design adds a touch of elegance and uniqueness to the property, making it a truly special find.

Convenience is key with parking available for 2 vehicles, ensuring you never have to worry about finding a spot after a long day.

Located in the heart of St. Aubins village, residents will enjoy easy access to local amenities, scenic walks, and the beautiful surroundings that St Aubins has to offer and with a regular bus route nearby, commuting to St Helier or anywhere else on the island is a breeze.

Don't miss out on the opportunity to own this lovely duplex apartment, with its convenient layout, parking for 2 vehicles, and prime location in St. Aubins village, this property has all the makings of a wonderful home. Contact us today to arrange a viewing and experience the charm of this delightful residence for yourself.

All primary utilities except gas are available. The property features electric heating and is fully equipped with double-glazed windows. Additionally, it is wired for fiber-optic internet and Sky television services.

Entrance Hall

Bedroom 2
8'10" x 8'8" (2.70 x 2.66)





Bathroom
8'8" x 5'10" (2.66 x 1.80)

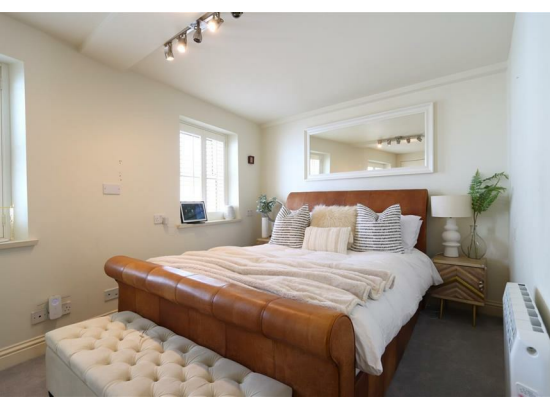
Bedroom 1
16'6" x 9'6" (5.03 x 2.92)

Stairs to

Open plan kitchen/ lounge dining
space
24'7" x 14'8" (7.51 x 4.49)

Balcony
10'5" x 5'8" (3.20 x 1.75)

Services



Floor Plan



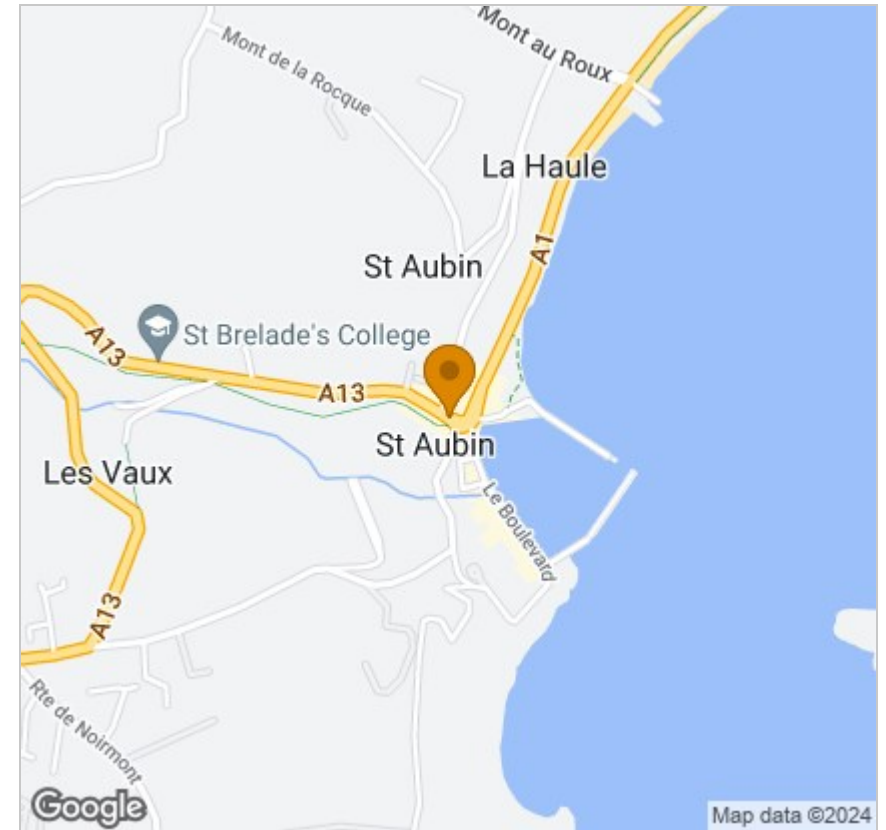
Viewing

Please contact our Troys Estate Agency Ltd Office on 01534 607070 if you wish to arrange a viewing appointment for this property or require further information.

These particulars, whilst believed to be accurate are set out as a general outline only for guidance and do not constitute any part of an offer or contract. Intending purchasers should not rely on them as statements of representation of fact, but must satisfy themselves by inspection or otherwise as to their accuracy. No person in this firm's employment has the authority to make or give any representation or warranty in respect of the property.

10 Sand Street, St Helier, Jersey, JE2 3QF
Tel: 01534 607070 Email: duty@troysjsy.com

Area Map



Energy Efficiency Graph

