



48 Elizabeth Close Elizabeth Avenue
St. Brelade, Jersey, JE3 8GL

£499,000



48 Elizabeth Close Elizabeth

St. Brélade, Jersey, JE3 8GL

Share Transfer. This exquisite first-floor apartment, freshly refurbished, enjoys a prime location within the coveted Elizabeth Close development. Situated just a short stroll from La Moye Primary and Les Quennevais School, as well as the vibrant amenities of St Brélade, this residence offers a bright and spacious ambiance. With two generous double bedrooms, a good size lounge/diner, and a separate kitchen boasting integrated appliances. A modern house bathroom adds to the appeal. Completing this lovely home is a single garage, ample on-street parking, and beautifully manicured communal gardens. Exclusive representation by the sole agent."



Hallway
33'0 x 5'7 (10.06m x 1.70m)

Kitchen
10'7 x 7'6 (3.23m x 2.29m)

Lounge/ diner
16'9 x 16'2 (5.11m x 4.93m)

Bedroom 1
13'5 x 11'2 (4.09m x 3.40m)

House bathroom
10'7 x 8'3 (3.23m x 2.51m)

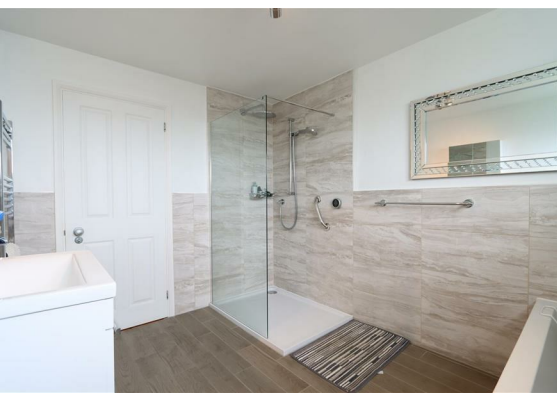
Bedroom 2
12'4 x 10'7 (3.76m x 3.23m)

Exterior

Parking

Services/charges





Floor Plan



Viewing

Please contact our Troys Estate Agency Ltd Office on 01534 607070 if you wish to arrange a viewing appointment for this property or require further information.

These particulars, whilst believed to be accurate are set out as a general outline only for guidance and do not constitute any part of an offer or contract. Intending purchasers should not rely on them as statements of representation of fact, but must satisfy themselves by inspection or otherwise as to their accuracy. No person in this firm's employment has the authority to make or give any representation or warranty in respect of the property.

10 Sand Street, St Helier, Jersey, JE2 3QF
Tel: 01534 607070 Email: duty@troysjsy.com

Area Map



Energy Efficiency Graph

Energy Efficiency Rating		
	Current	Potential
Very energy efficient - lower running costs		
(92 plus) A		
(81-91) B		
(69-80) C		
(55-68) D		
(39-54) E		
(21-38) F		
(1-20) G		
Not energy efficient - higher running costs		
England & Wales	EU Directive 2002/91/EC	