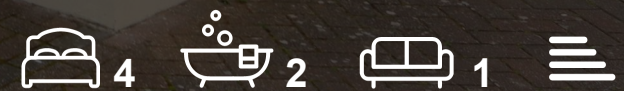




88 La Providence La Vallee De St. Pierre
St. Lawrence, Jersey, JE3 1PP

£795,000



88 La Providence La Vallee St. Lawrence, Jersey, JE3 1PP

Troys are delighted to introduce this immaculately presented first-time buyer family home situated within a lovely development bordered with communal garden areas. The property boasts an entrance hall, cloakroom, lounge, a separate kitchen/ diner with access to a good size enclosed rear garden. The first floor provides the master bedroom with an en-suite shower room, two double bedrooms, a single bedroom and house bathroom. A front garden, single garage, designated parking for one car and plenty of visitor parking completes this beautiful home.

Hallway

Lounge

Kitchen/ diner

Cloakroom

Stairs to first floor

Master bedroom

En-suite

Bedroom 2

Bedroom 3

House bathroom

Bedroom 4

Garden

Garage

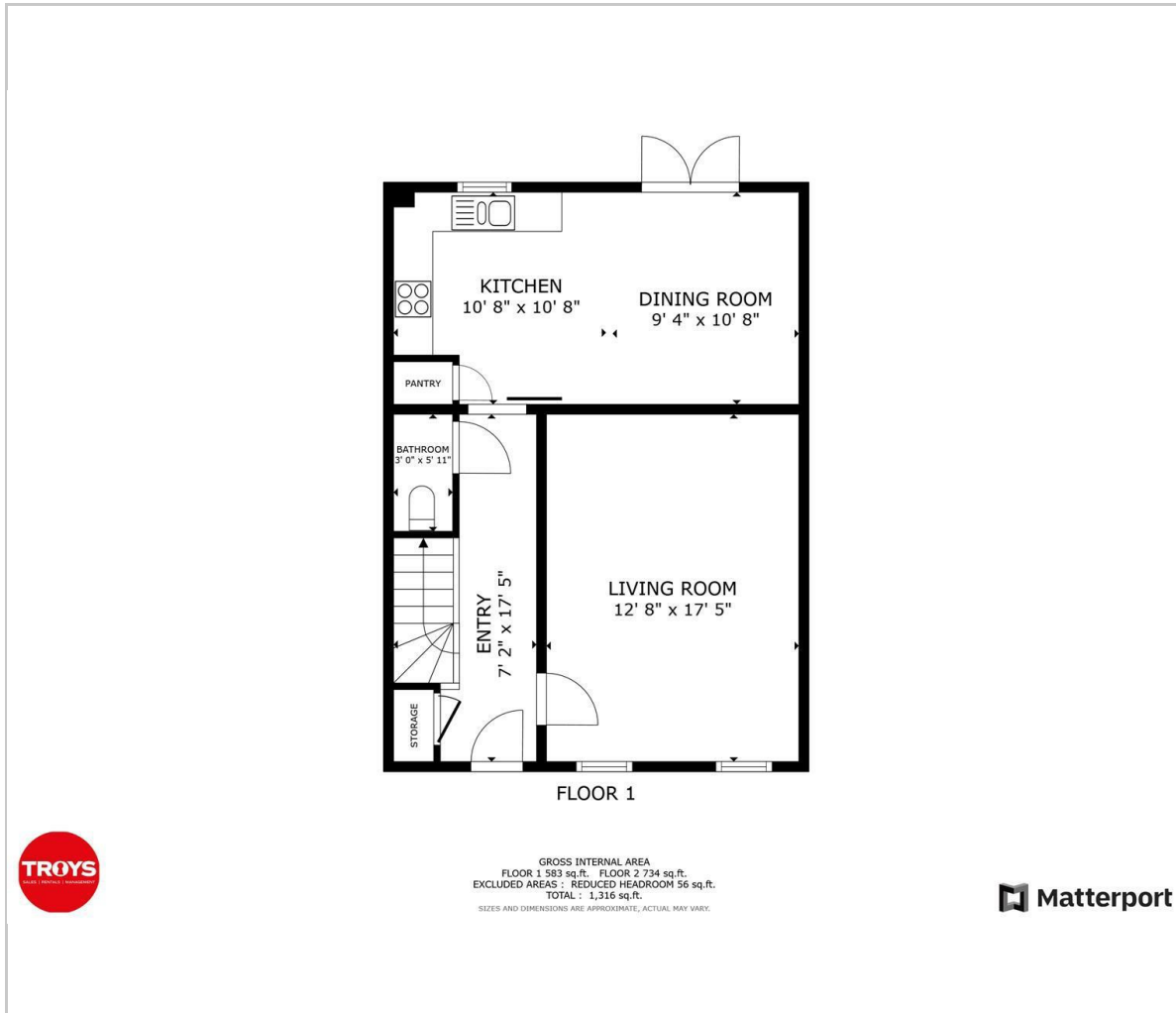
Parking

Services





Floor Plan



Viewing

Please contact our Troys Estate Agency Ltd Office on 01534 607070 if you wish to arrange a viewing appointment for this property or require further information.

These particulars, whilst believed to be accurate are set out as a general outline only for guidance and do not constitute any part of an offer or contract. Intending purchasers should not rely on them as statements of representation of fact, but must satisfy themselves by inspection or otherwise as to their accuracy. No person in this firms employment has the authority to make or give any representation or warranty in respect of the property.

10 Sand Street, St Helier, Jersey, JE2 3QF
Tel: 01534 607070 Email: duty@troysjsy.com

Area Map



Energy Efficiency Graph

