



B138 Millais House La Rue De L'etau  
St. Helier, Jersey, JE2 3ED

**£895,000**



## B138 Millais House La Rue

St. Helier, Jersey, JE2 3ED

This stunning south west facing two bedroom two bathroom Marina apartment is presented in immaculate condition and boasts uninterrupted sea views towards Elizabeth Castle and St Aubins bay and is an absolute must see.

Located within a short walking distance of the finance centre, town centre and everything St Helier has to offer. The development has on-site supermarket, coffee shop, doctor/ dentist concierge service and lots of other convenient amenities. To complete this beautiful apartment is a 25ft south west facing balcony, air condition throughout and a basement level designated car parking space within the underground garage complex.

Hallway  
9'4 x 6'8 (2.84m x 2.03m)

Utility  
5'0 x 3'0 (1.52m x 0.91m)

Open plan living

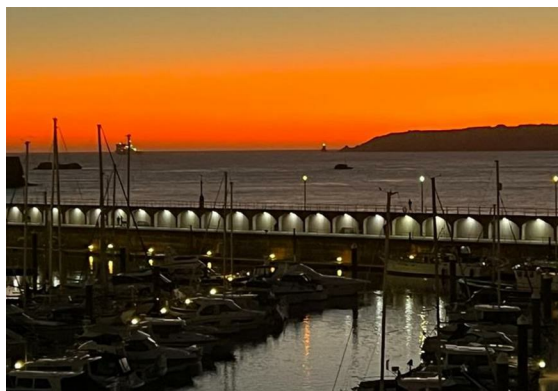
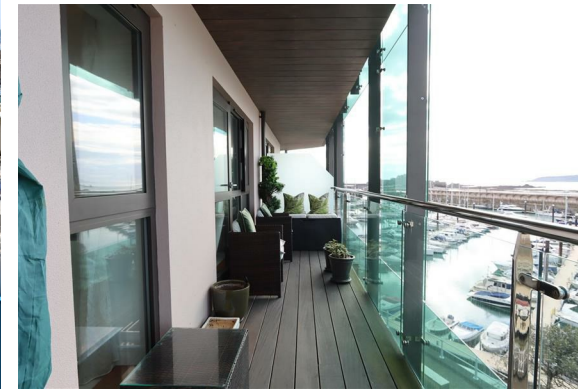
Kitchen  
12'2 x 9'9 (3.71m x 2.97m)

Lounge/diner  
12'2 x 10'2 (3.71m x 3.10m)

Master bedroom  
20'3 x 9'2 (6.17m x 2.79m)

En-suite  
6'7 x 4'4 (2.01m x 1.32m)

bedroom 2  
12'0 x 9'4 (3.66m x 2.84m)





House bathroom  
6'6 x 5'0 (1.98m x 1.52m)

Balcony  
25'0 x 5'0 (7.62m x 1.52m)

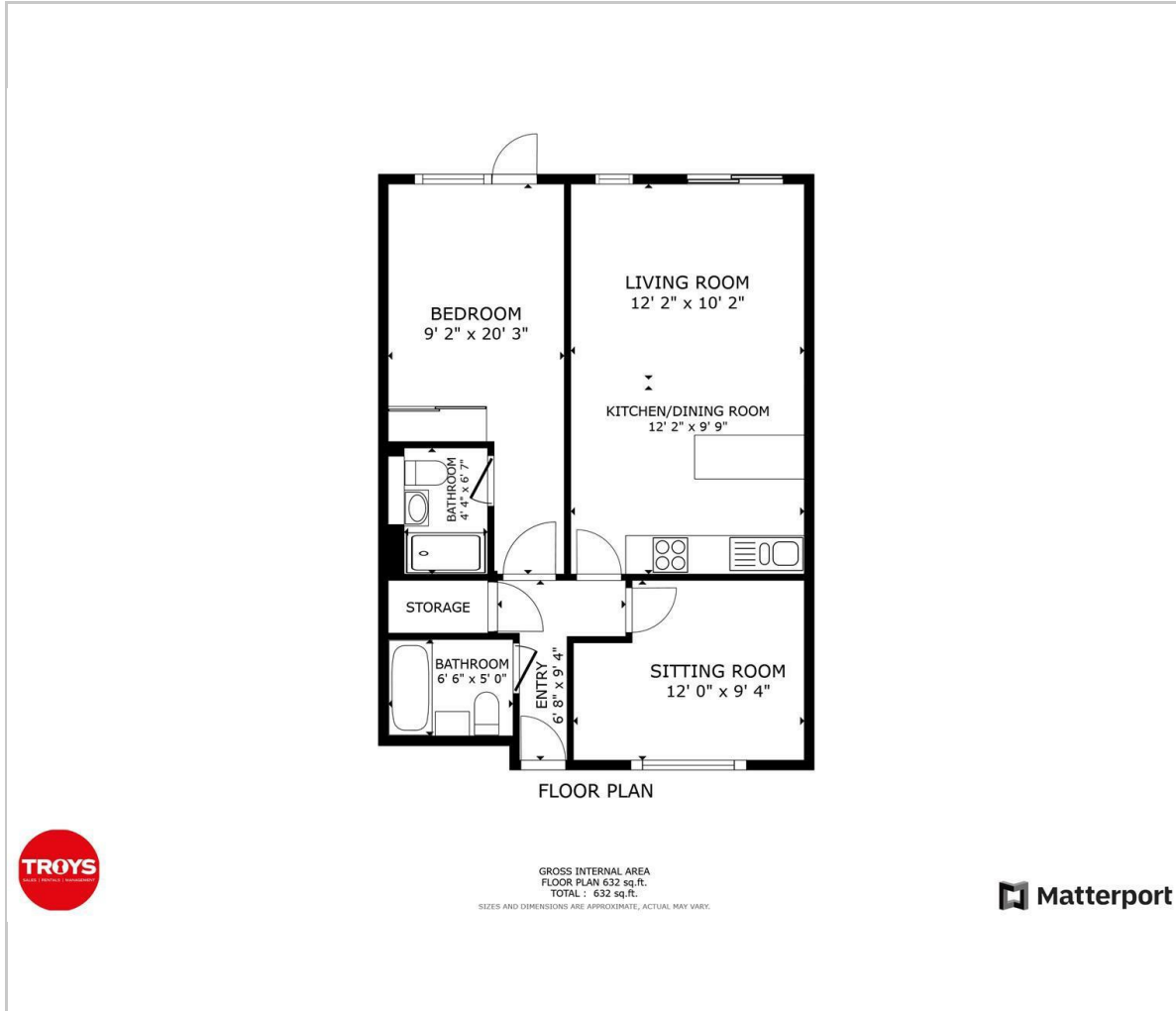
Exterior

Parking

Service charge

Services

## Floor Plan



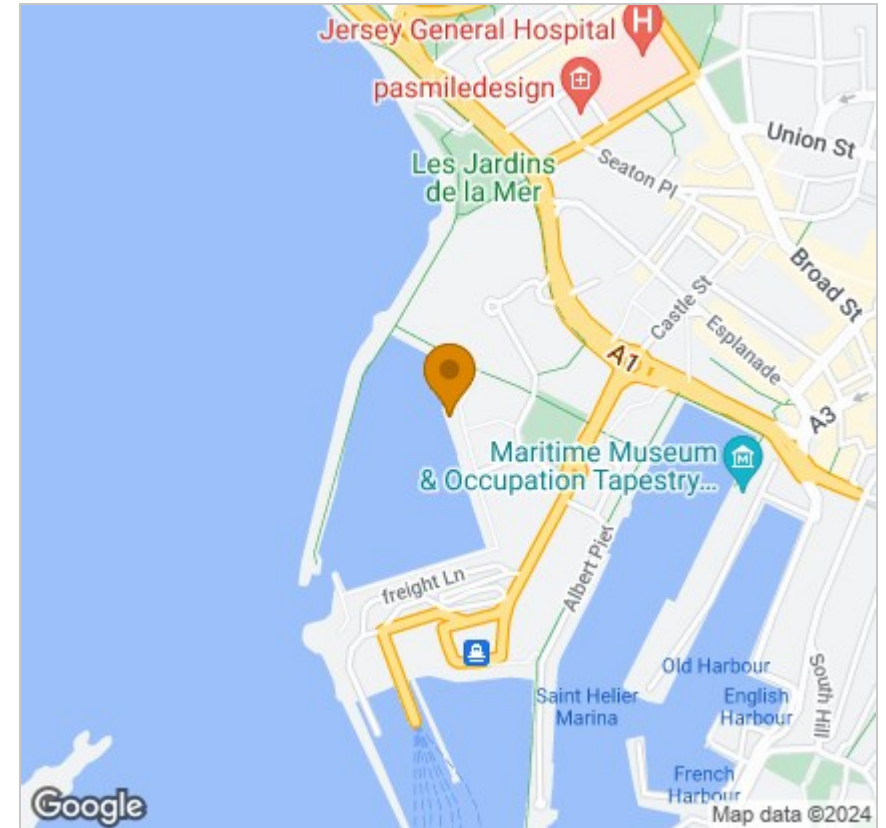
## Viewing

Please contact our Troys Estate Agency Ltd Office on 01534 607070 if you wish to arrange a viewing appointment for this property or require further information.

These particulars, whilst believed to be accurate are set out as a general outline only for guidance and do not constitute any part of an offer or contract. Intending purchasers should not rely on them as statements of representation of fact, but must satisfy themselves by inspection or otherwise as to their accuracy. No person in this firm's employment has the authority to make or give any representation or warranty in respect of the property.

10 Sand Street, St Helier, Jersey, JE2 3QF  
Tel: 01534 607070 Email: duty@troysjsy.com

## Area Map



## Energy Efficiency Graph

