



4 Tesson Villas La Vallee De St Pierre
, St Lawrence, JE2 1EZ

£895,000



4 Tesson Villas La Vallee De St Lawrence, JE2 1EZ

Troys Estate Agency are delighted to offer this beautiful gated granite detached family home. Situated on a small exclusive development this property offers great living space throughout and comprises of four double bedrooms, two bathrooms, modern eat-in kitchen with high quality integrated appliances, large lounge/diner with sliding doors leading out to a beautiful enclosed south facing garden. This property would be very well suited to anyone looking for a spacious family home. A large single garage along with designated parking for three cars completes this exclusive property. Chain free. Sole agent.

Hallway
12'10" x 8'0 (3.91m x 2.44m)

Cloakroom
9'7 x 4'2 (2.92m x 1.27m)

Lounge/ diner
24'11 x 14'8 (7.59m x 4.47m)

Kitchen
12'8 x 10'1 (3.86m x 3.07m)

First floor Hallway
14'1 x 5'6 (4.29m x 1.68m)

Master Bedroom
17'1 x 13'1 (5.21m x 3.99m)

En-suite
8'6" x 6'7 (2.59m x 2.01m)

Bedroom 2
13'4 x 10'6 (4.06m x 3.20m)

House Bathroom
8'6 x 6'6 (2.59m x 1.98m)





Bedroom 3
13'3 x 10'3 (4.04m x 3.12m)

Bedroom 4
9'7 x 8'1 (2.92m x 2.46m)

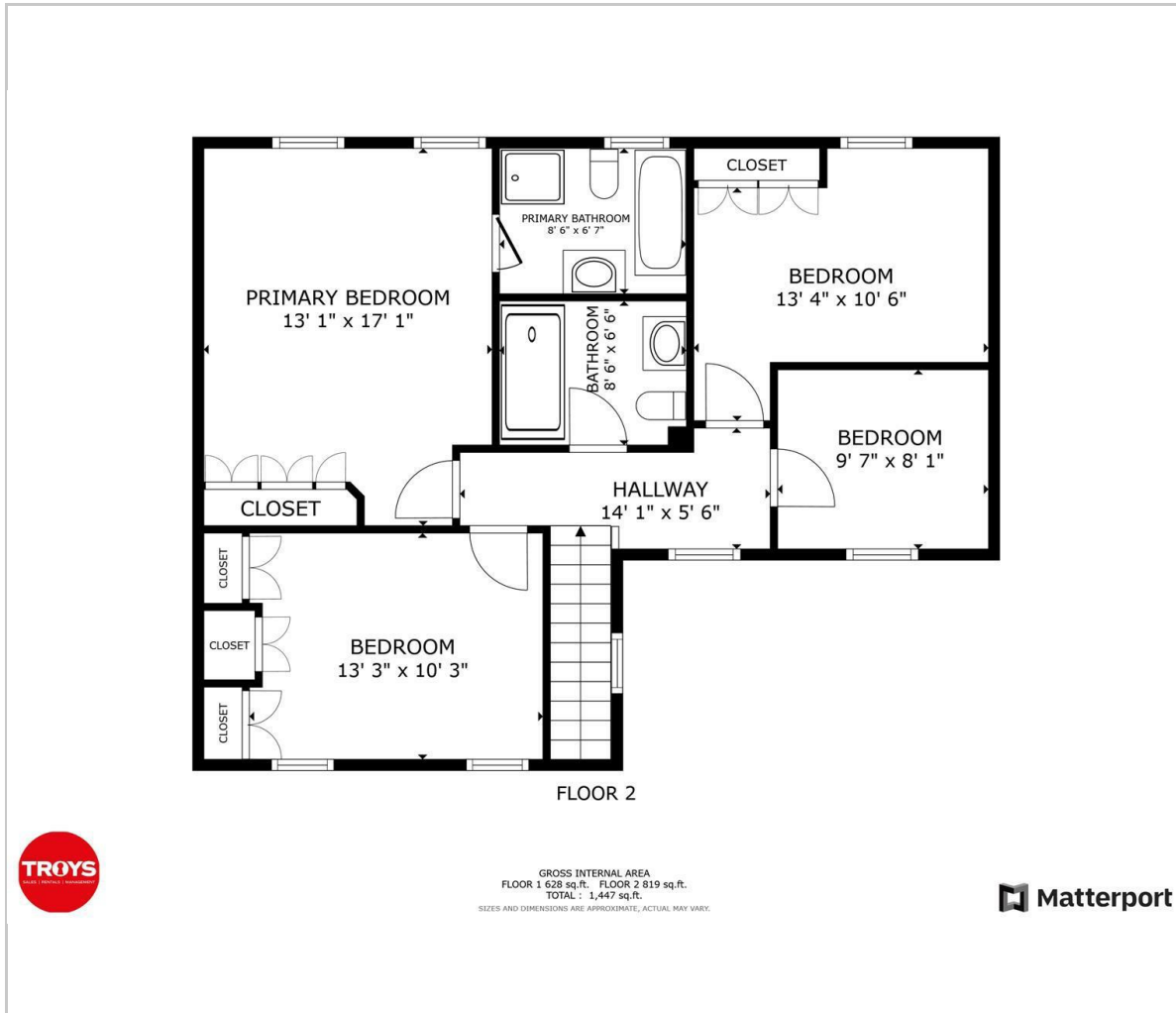
Exterior

Parking

Services



Floor Plan



Viewing

Please contact our Troys Estate Agency Ltd Office on 01534 607070 if you wish to arrange a viewing appointment for this property or require further information.

These particulars, whilst believed to be accurate are set out as a general outline only for guidance and do not constitute any part of an offer or contract. Intending purchasers should not rely on them as statements of representation of fact, but must satisfy themselves by inspection or otherwise as to their accuracy. No person in this firm's employment has the authority to make or give any representation or warranty in respect of the property.

10 Sand Street, St Helier, Jersey, JE2 3QF
 Tel: 01534 607070 Email: duty@troysjsy.com

Area Map



Energy Efficiency Graph

