



2 St Melior Les Grands Vaux  
St. Saviour, Jersey, JE2 7NA

£895,000



## 2 St Melior Les Grands Vaux

St. Saviour, Jersey, JE2 7NA

Two new build modern semi detached family homes situated in Grand Vaux close to the main schools and the town center. Both properties have an internal floor area of 1230 square feet. On the ground floor there is a welcoming entrance hall leading you to a spacious open plan lounge /kitchen diner (L-Shaped), separate utility room and cloakroom. On the first floor there are three double bedroom all with built in wardrobe with the master bedroom having an En-suite shower room, study/bedroom 4 and a beautiful house bathroom. The rear gardens are west facing part patio and mostly laid to lawn. To the front of the property is a paved drive way and parking available for three cars. FREEHOLD.



Hallway  
21'7" x 9'2" (6.6 x 2.8)

Open plan living

Lounge  
12'5" x 21'7" (3.8 x 6.6)

Kitchen/ diner  
21'7" x 11'1" (6.6 x 3.4)

Utility room  
11'5" x 4'7" (3.5 x 1.4)

Cloakroom  
6'2" x 3'11" (1.9 x 1.2)

First floor

Master bedroom  
13'9" x 9'6" (4.2 x 2.9)

En-suite





Bedroom 2  
14'9" x 9'2" (4.5 x 2.8)

Bedroom 3  
13'9" x 9'2" (4.2 x 2.8)

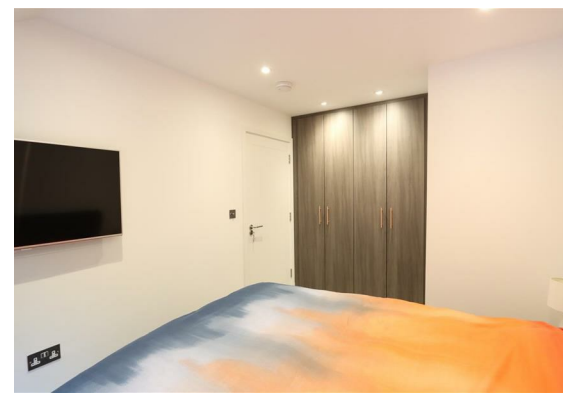
House bathroom  
9'6" x 6'2" (2.9 x 1.9)

Study/ Bedroom 4  
12'5" x 7'6" (3.8 x 2.3)

Garden

Parking

Services



## Floor Plan



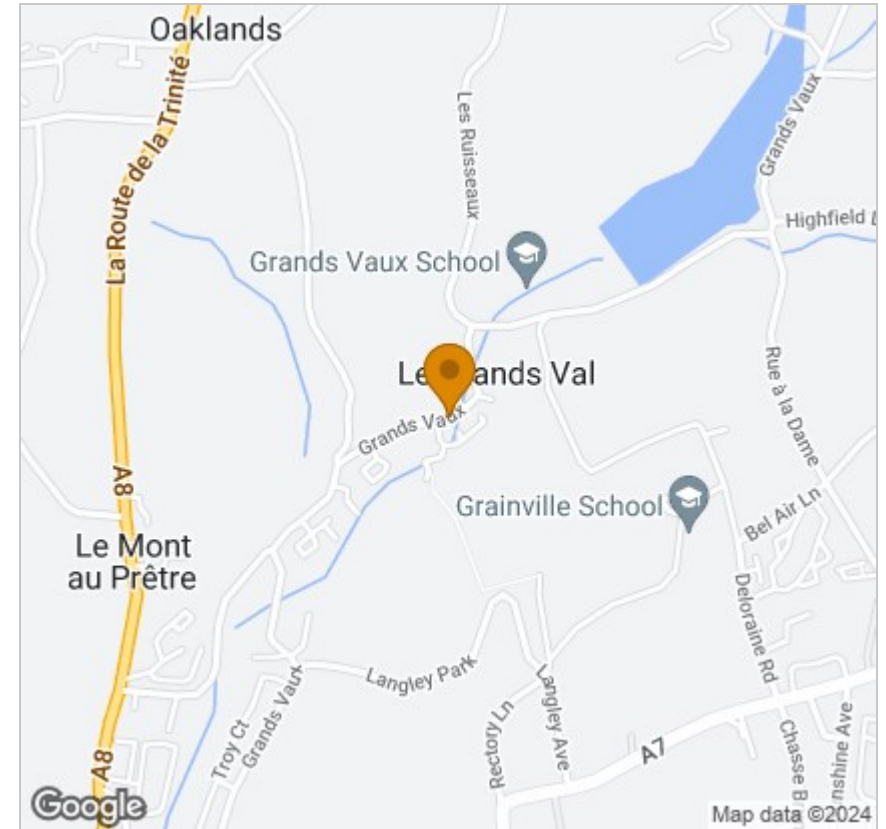
## Viewing

Please contact our Troys Estate Agency Ltd Office on 01534 607070 if you wish to arrange a viewing appointment for this property or require further information.

These particulars, whilst believed to be accurate are set out as a general outline only for guidance and do not constitute any part of an offer or contract. Intending purchasers should not rely on them as statements of representation of fact, but must satisfy themselves by inspection or otherwise as to their accuracy. No person in this firm's employment has the authority to make or give any representation or warranty in respect of the property.

10 Sand Street, St Helier, Jersey, JE2 3QF  
Tel: 01534 607070 Email: duty@troysjsy.com

## Area Map



## Energy Efficiency Graph

