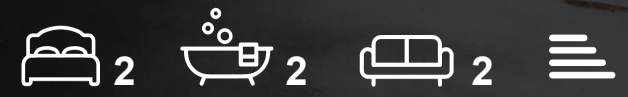




One Bakers View Clearview Street
St. Helier, Jersey, JE2 3YY

£659,000



One Bakers View Clearview

St. Helier, Jersey, JE2 3YY

Situated in a quiet lane on the outskirts of town are these brand new townhouses. Built to a high standard, to create contemporary modern living with underfloor heating throughout. Boasting, open plan living, lounge kitchen diner, two double bedrooms one En-suite and a beautiful house bathroom, separate office/ bedroom 3 and a private roof terrace great for evening sun and entertaining. To complete this stunning townhouse is a single garage.

Hallway
19'8" x 8'2" (6.0 x 2.5)

First floor landing
9'10" x 3'3" (3.0 x 1.0)

Open plan living
26'2" x 13'9" (8.0 x 4.2)

Lounge

Kitchen

Second Floor landing
9'10" x 3'3" (3.0 x 1.0)

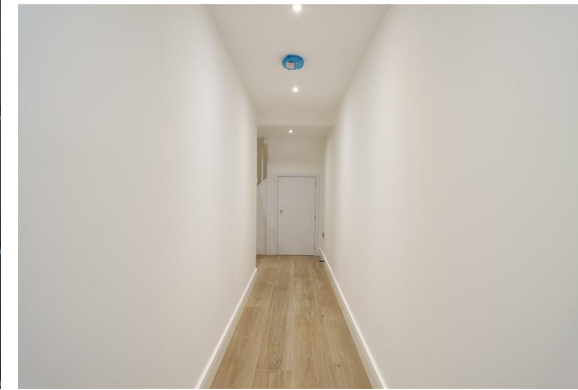
Bedroom 1
13'9" x 11'9" (4.2 x 3.6)

House bathroom
6'10" x 5'6" (2.1 x 1.7)

Office
9'2" x 6'2" (2.8 x 1.9)

Third floor landing

Bedroom 2
10'5" x 9'2" (3.2 x 2.8)





En-suite
6'2" x 4'7" (1.9 x 1.4)

Roof terrace

Garage
25'3" x 10'2" (7.7 x 3.1)

Services



Floor Plan



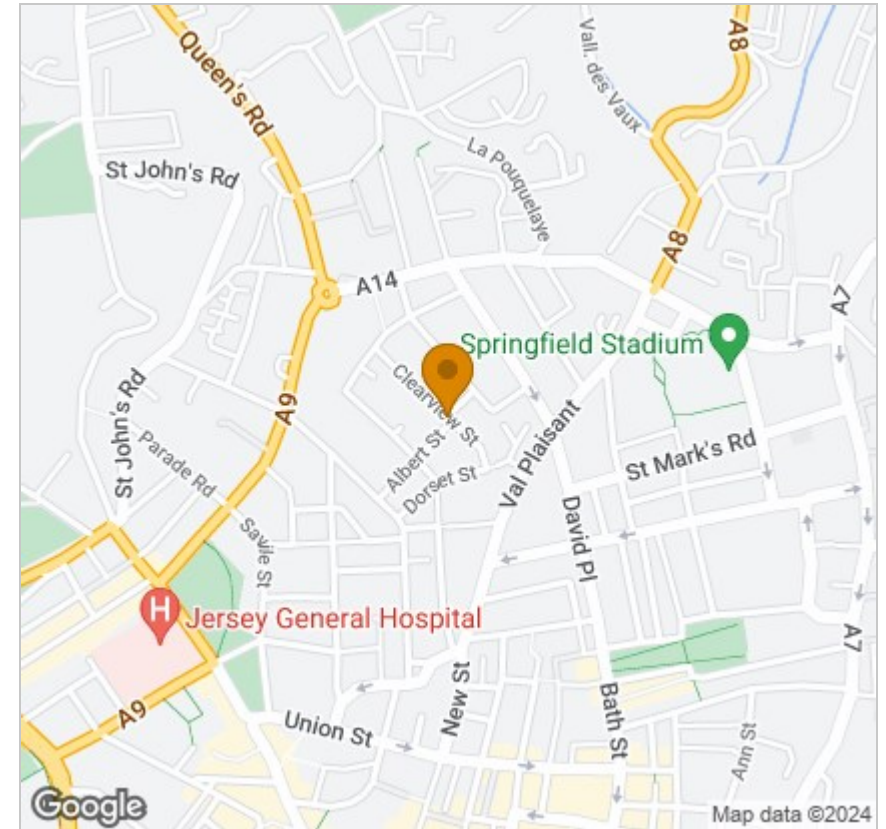
Viewing

Please contact our Troys Estate Agency Ltd Office on 01534 607070 if you wish to arrange a viewing appointment for this property or require further information.

These particulars, whilst believed to be accurate are set out as a general outline only for guidance and do not constitute any part of an offer or contract. Intending purchasers should not rely on them as statements of representation of fact, but must satisfy themselves by inspection or otherwise as to their accuracy. No person in this firm's employment has the authority to make or give any representation or warranty in respect of the property.

10 Sand Street, St Helier, Jersey, JE2 3QF
Tel: 01534 607070 Email: duty@troysjsy.com

Area Map



Energy Efficiency Graph

