



The fold Duhamel Lane  
St. Helier, Jersey, JE2 4ZG

**£495,000**



## The fold Duhamel Lane

St. Helier, Jersey, JE2 4ZG

Situated in a quiet lane on the outskirts of town is this new build block of only three apartments. Built to a very high standard, to create contemporary modern living. Boasting, open plan living, lounge kitchen diner, two double bedrooms, a beautiful house bathroom and a large sunny terrace with roof top views great for evening sun and entertaining, underfloor heating throughout and space to store a bicycle. Viewing comes highly recommended to appreciate the workmanship on these stunning apartments.

Hallway

Open plan living  
19'4 x 13'4 (5.89m x 4.06m)

Lounge

Kitchen

Bedroom 1  
10'7 x 9'7 (3.23m x 2.92m)

House bathroom  
7'2 x 5'10 (2.18m x 1.78m)

Bedroom 2  
10'7 x 9'1 (3.23m x 2.77m)

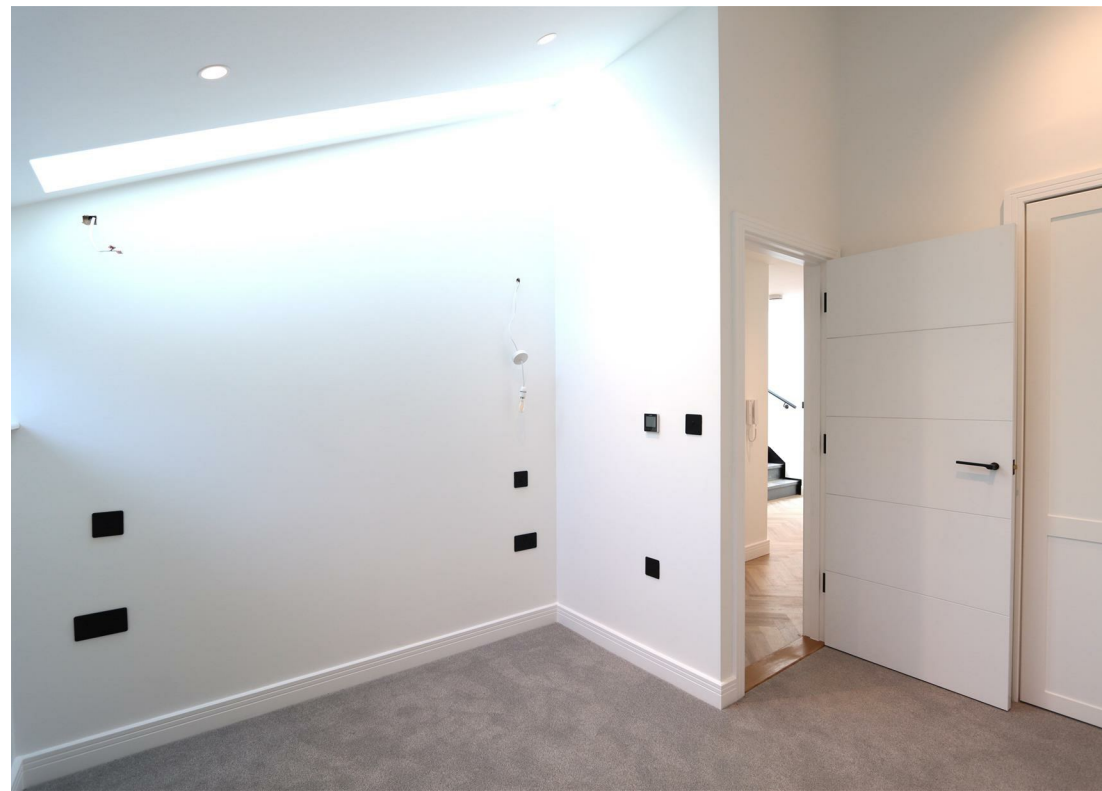
Roof terrace  
22'10 x 11'6 (6.96m x 3.51m)

Services

Service charge







## Floor Plan



## Viewing

Please contact our Troys Estate Agency Ltd Office on 01534 607070 if you wish to arrange a viewing appointment for this property or require further information.

These particulars, whilst believed to be accurate are set out as a general outline only for guidance and do not constitute any part of an offer or contract. Intending purchasers should not rely on them as statements of representation of fact, but must satisfy themselves by inspection or otherwise as to their accuracy. No person in this firm's employment has the authority to make or give any representation or warranty in respect of the property.

10 Sand Street, St Helier, Jersey, JE2 3QF  
Tel: 01534 607070 Email: duty@troysjsy.com

## Area Map



## Energy Efficiency Graph

