



Southdale La Verte Rue
St. Brelade, Jersey, JE3 8EL

Open To Offers £1,294,000



Southdale La Verte Rue

St. Brelade, Jersey, JE3 8EL

Large Detached 4 Bedroom Bungalow.

Desirable detached bungalow in an excellent position in a most sought after location. The property is situated on large plot on a quiet green lane. The generously proportioned accommodation briefly comprising: entrance hall, spacious lounge, kitchen, dining/family room, 4 bedrooms, 2 bathrooms and well maintained large garden. The front of the house provides parking for 4 cars and . The accommodation is offered for sale in good decorative order throughout and viewing is highly recommended.

Services

Fully double glazed. Mains drains and water. Oil fired central heating.

Entrance Porch

6'10" x 6'8" (2.10 x 2.04)

Bedroom 1

12'5" x 13'4" (3.81 x 4.07)

Bedroom 2

12'5" x 13'8" (3.81 x 4.19)

Living Room

12'5" x 20'8" (3.81 x 6.30)

Kitchen

12'5" x 12'7" (3.81 x 3.84)

Sun Room / Family Room

18'4" x 13'10" (5.60 x 4.24)

Bathroom 1

7'8" x 12'10" (2.34 x 3.92)





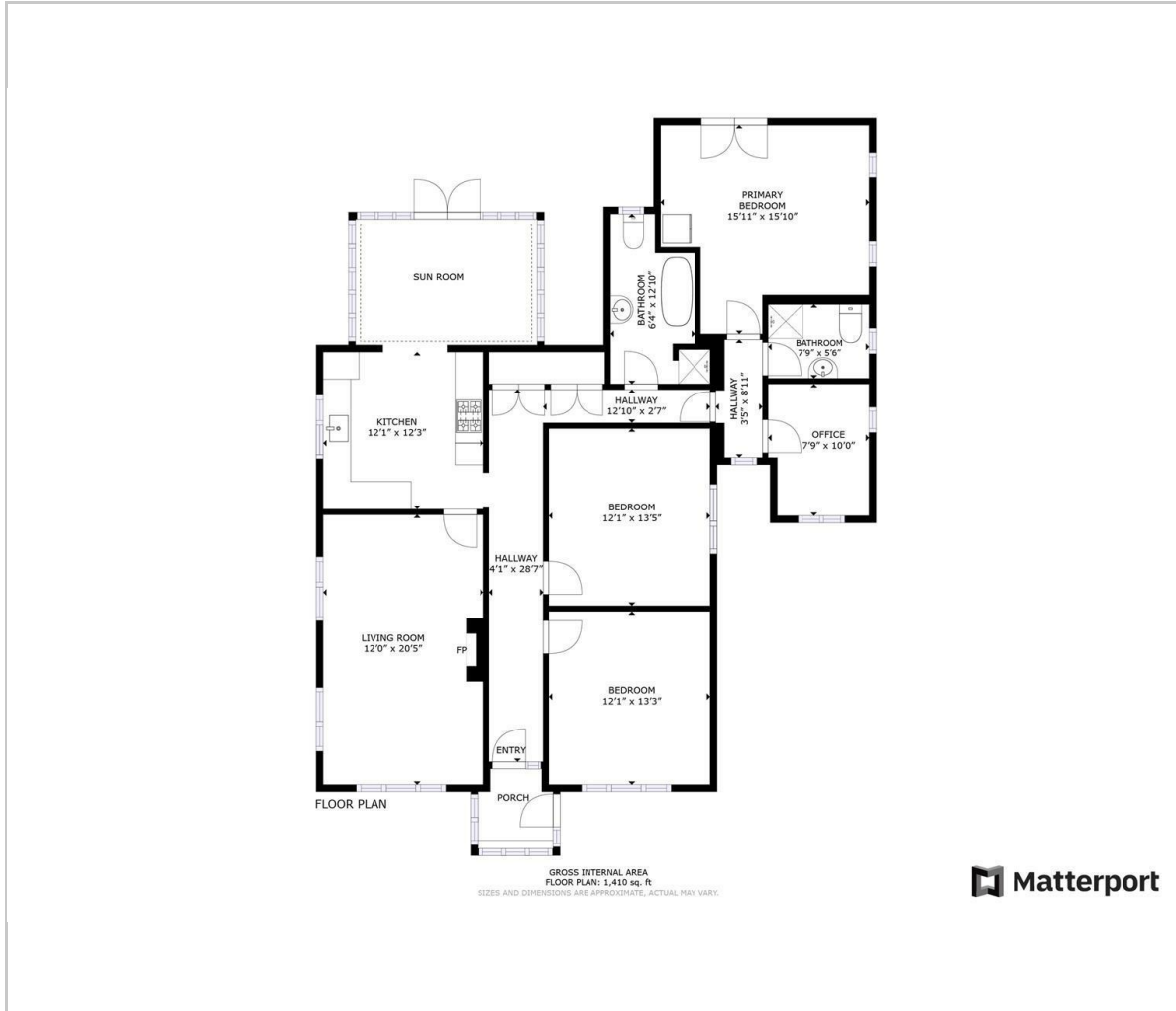
Bedroom 4/ Office
7'10" x 10'2" (2.40 x 3.12)

Bathroom 2
7'10" x 5'10" (2.40 x 1.78)

Bedroom
16'0" x 16'3" (4.89 x 4.97)



Floor Plan



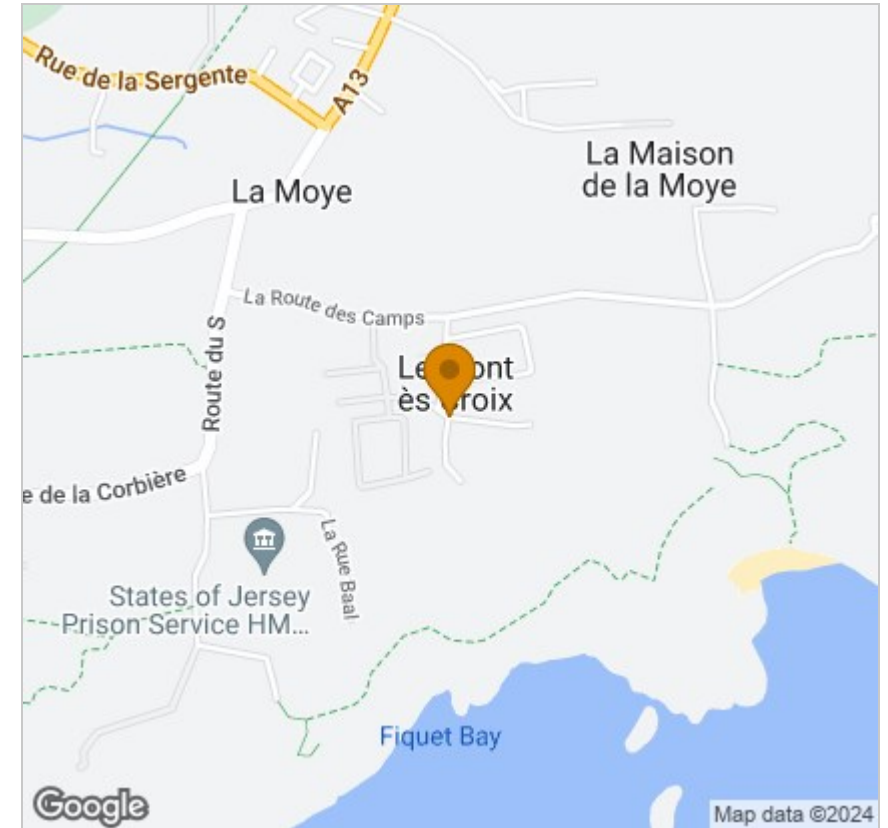
Viewing

Please contact our Troys Estate Agency Ltd Office on 01534 607070 if you wish to arrange a viewing appointment for this property or require further information.

These particulars, whilst believed to be accurate are set out as a general outline only for guidance and do not constitute any part of an offer or contract. Intending purchasers should not rely on them as statements of representation of fact, but must satisfy themselves by inspection or otherwise as to their accuracy. No person in this firms employment has the authority to make or give any representation or warranty in respect of the property.

10 Sand Street, St Helier, Jersey, JE2 3QF
Tel: 01534 607070 Email: duty@troysjsy.com

Area Map



Energy Efficiency Graph

