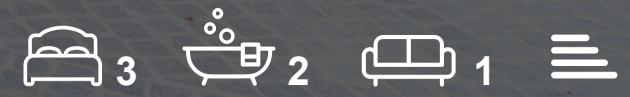




La Rue Du Rondin
St. Mary, Jersey, JE3 3AE

£825,000



La Rue Du Rondin

St. Mary, Jersey, JE3 3AE

Nestled within the sought after country parish of St Mary is this stunning refurbished three bedroom granite faced family home set within a small development of similar houses. The recent renovations have transformed this cottage into a stunning home and one not to be missed. The property boasts, lounge, separate modern kitchen/diner with doors leading onto the rear patio garden great for entertaining and privacy, utility room and modern house bathroom are all on the ground floor. On the first floor there are three spacious double bedrooms and a shower room. To complete this lovely home is a front Patio, parking for 4+ cars and all residents have access to a stunning, picturesque large communal garden surrounded with mature trees.



Porch

Hallway

Lounge
15'9 x 12'8 (4.80m x 3.86m)

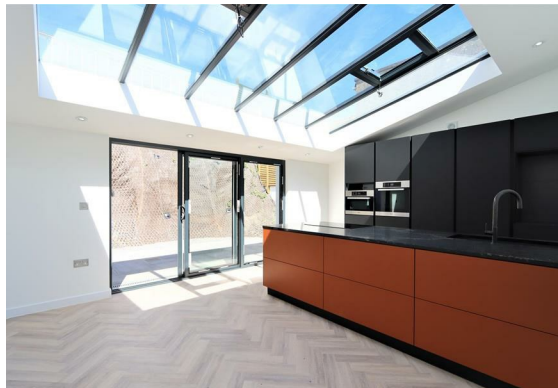
Kitchen/diner
20'1 x 14'7 (6.12m x 4.45m)

Utility room
7'2 x 3'4 (2.18m x 1.02m)

Bathroom
8'3 x 4'3 (2.51m x 1.30m)

First floor hallway

Master bedroom
12'1 x 9'9 (3.68m x 2.97m)





Bedroom 2
12'3 x 9'9 (3.73m x 2.97m)

Shower room
7'8 x 3'6 (2.34m x 1.07m)

Bedroom 3
9'1 x 8'4 (2.77m x 2.54m)

Exterior

Loft

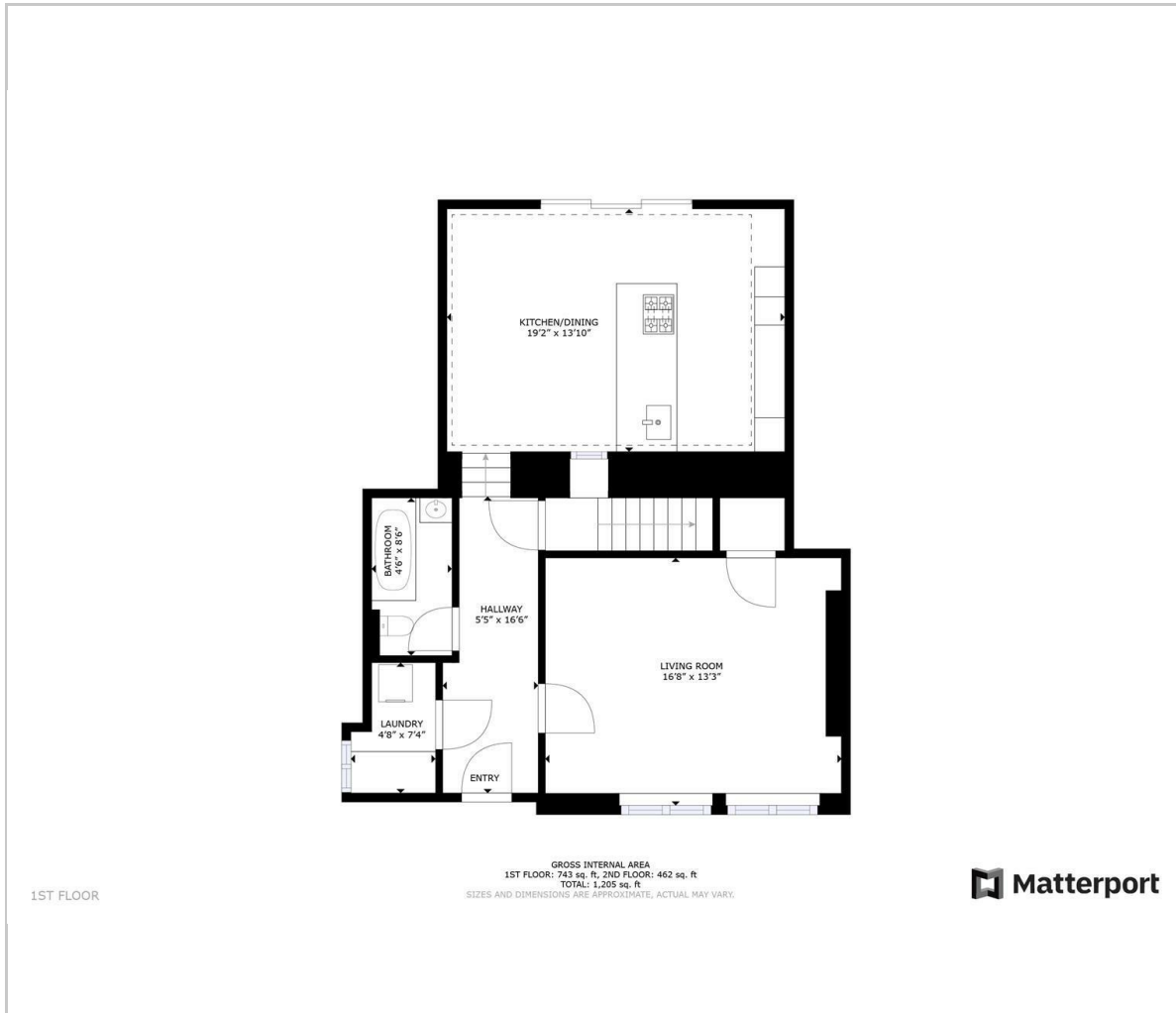
Parking

Communal garden

Services



Floor Plan



Viewing

Please contact our Troys Estate Agency Ltd Office on 01534 607070 if you wish to arrange a viewing appointment for this property or require further information.

These particulars, whilst believed to be accurate are set out as a general outline only for guidance and do not constitute any part of an offer or contract. Intending purchasers should not rely on them as statements of representation of fact, but must satisfy themselves by inspection or otherwise as to their accuracy. No person in this firms employment has the authority to make or give any representation or warranty in respect of the property.

10 Sand Street, St Helier, Jersey, JE2 3QF
Tel: 01534 607070 Email: duty@troysjsy.com

Area Map



Energy Efficiency Graph

