



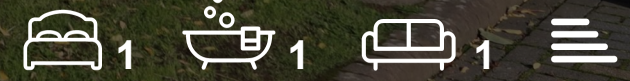
Millbrook Crescent La Route De St. Aubin  
St. Lawrence, Jersey, JE3 1LY

**£425,000**

13

14

15



## Millbrook Crescent La Route St. Lawrence, Jersey, JE3 1LY

Share Transfer. Troys are delighted to offer to the market this purpose- built ground floor one bedroom apartment in the sought after Millbrook Crescent Development. Situated across from Millbrook park, on a great bus route and easy access to the beach, and a short walk to town or St Aubin. The apartment boasts large open plan lounge/ kitchen with integrated appliances and a patio doors leading onto the south facing patio, double bedroom with built in bedroom furniture and a lovely modern house bathroom. To complete this spacious apartment is a lock up store room, communal garden, private parking for 1 car and plenty visitors parking, This immaculately presented apartment would be a great first buy or buy-to-let. Early viewing is highly recommended from vendors sole agent.

Services:- Service charges £141.22 pm to include Water rates, sinking fund, building insurance, cleaning for communal areas and communal gardens upkeep. Electric heating, Parking space No13, Storage shed No13.

Entrance Hall

Kitchen/livingroom

Bedroom

Bathroom

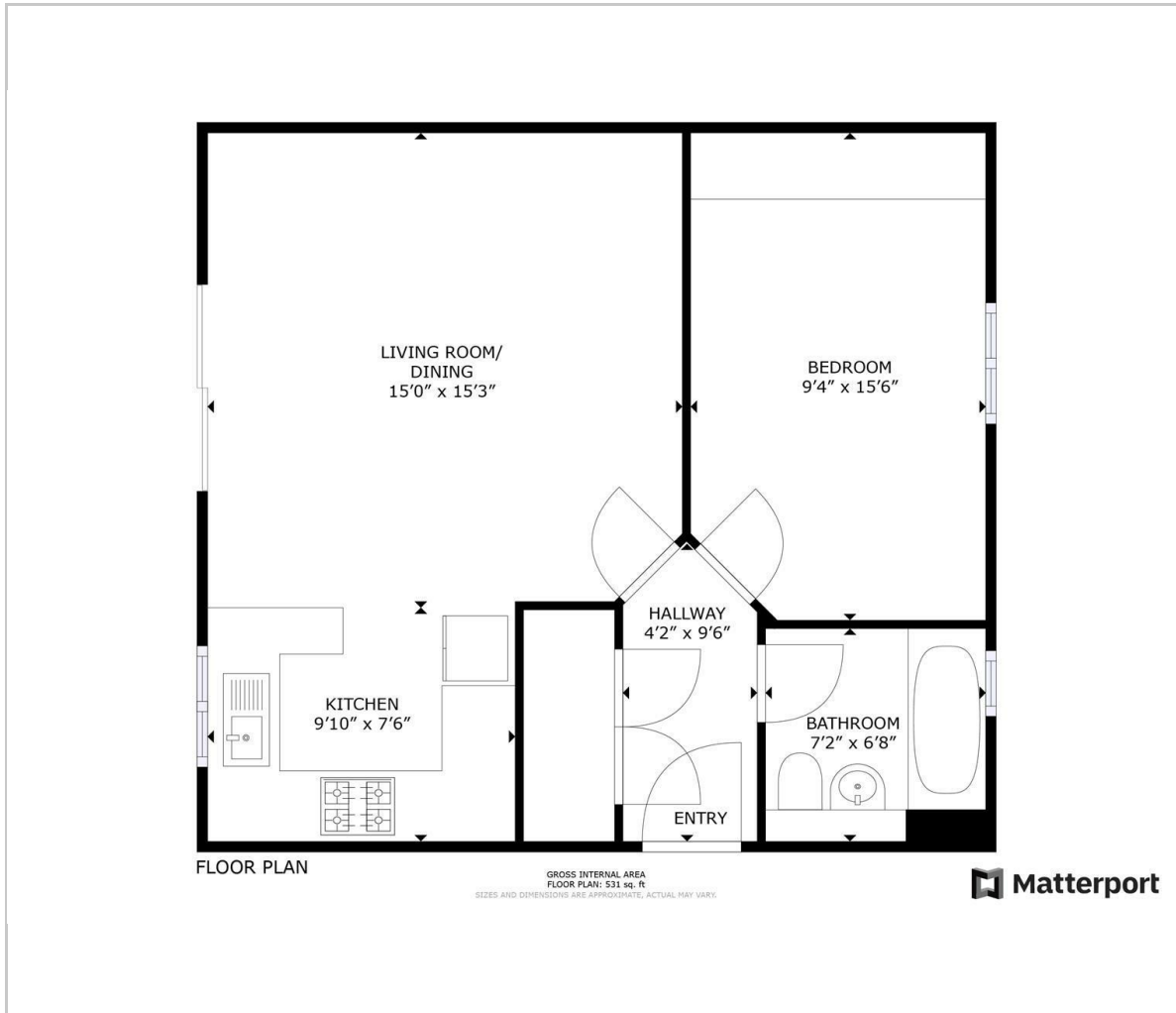
Services/ charges

Parking





## Floor Plan



## Viewing

Please contact our Troys Estate Agency Ltd Office on 01534 607070 if you wish to arrange a viewing appointment for this property or require further information.

These particulars, whilst believed to be accurate are set out as a general outline only for guidance and do not constitute any part of an offer or contract. Intending purchasers should not rely on them as statements of representation of fact, but must satisfy themselves by inspection or otherwise as to their accuracy. No person in this firm's employment has the authority to make or give any representation or warranty in respect of the property.

10 Sand Street, St Helier, Jersey, JE2 3QF  
Tel: 01534 607070 Email: duty@troysjsy.com

## Area Map



## Energy Efficiency Graph

