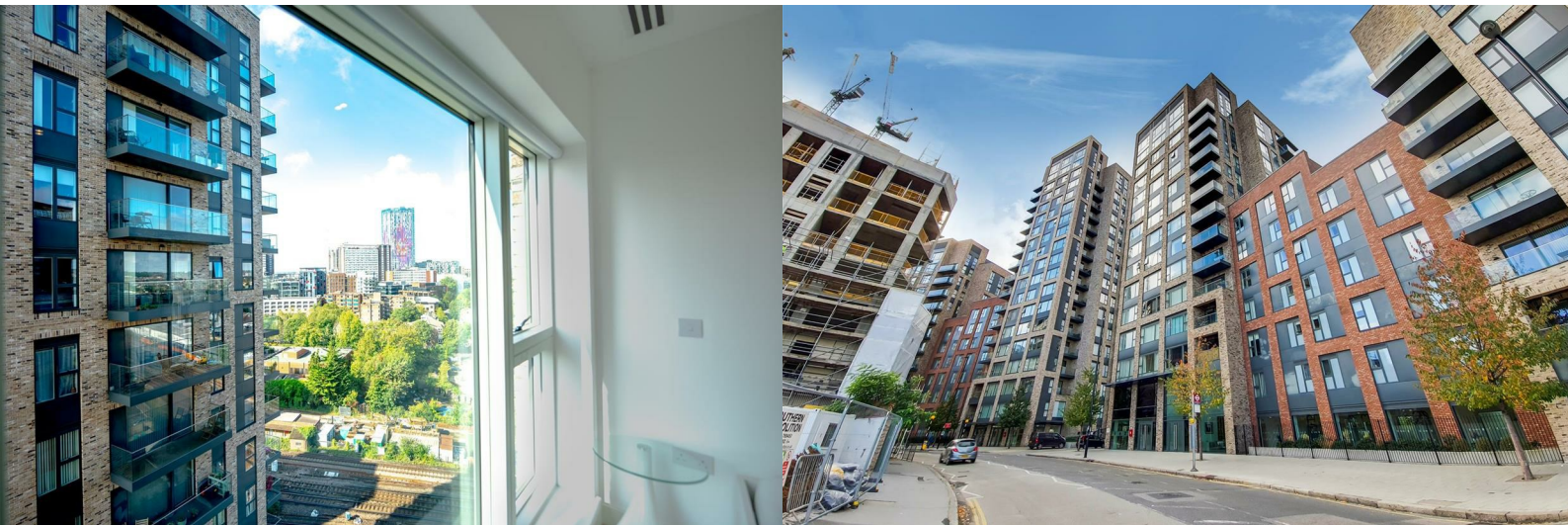




Santina Apartments, Croydon, CR0 6FH

£2,100 PCM



Santina Apartments, Croydon, CR0 6FH

£2,100 PCM



The feel throughout is modern and sleek and is fully furnished so ready to move into immediately.

This property benefits from comfort cooling & heating and comprises entrance hall with a large storage cupboard housing washer/dryer, open plan living room framed by large dual aspect double glazed windows and sliding doors on to private balcony with great views. The kitchen area is fitted with a range of base and wall units and integrated appliances including fridge/freezer and dishwasher. There is a family bathroom and two double bedrooms, one with a built-in wardrobe and ensuite shower.

Residents benefit from a concierge service, well equipped fitness suite, lift access, cycle storage and gated communal gardens. Parking is available at an additional cost.

Transport links are key with East Croydon train station just 0.2 miles away and providing direct links to London Bridge (16 mins), London Victoria (17 mins), St. Pancras Int (30 mins), Gatwick Airport (15 mins) and the south coast. Other local facilities include, the Tramlink network with links to Wimbledon and Beckenham, multiple bus routes and the popular BOXPARK with its lively and vibrant atmosphere.

Council Tax Band: E (London Borough of Croydon)
Holding Deposit: £484



Road Map



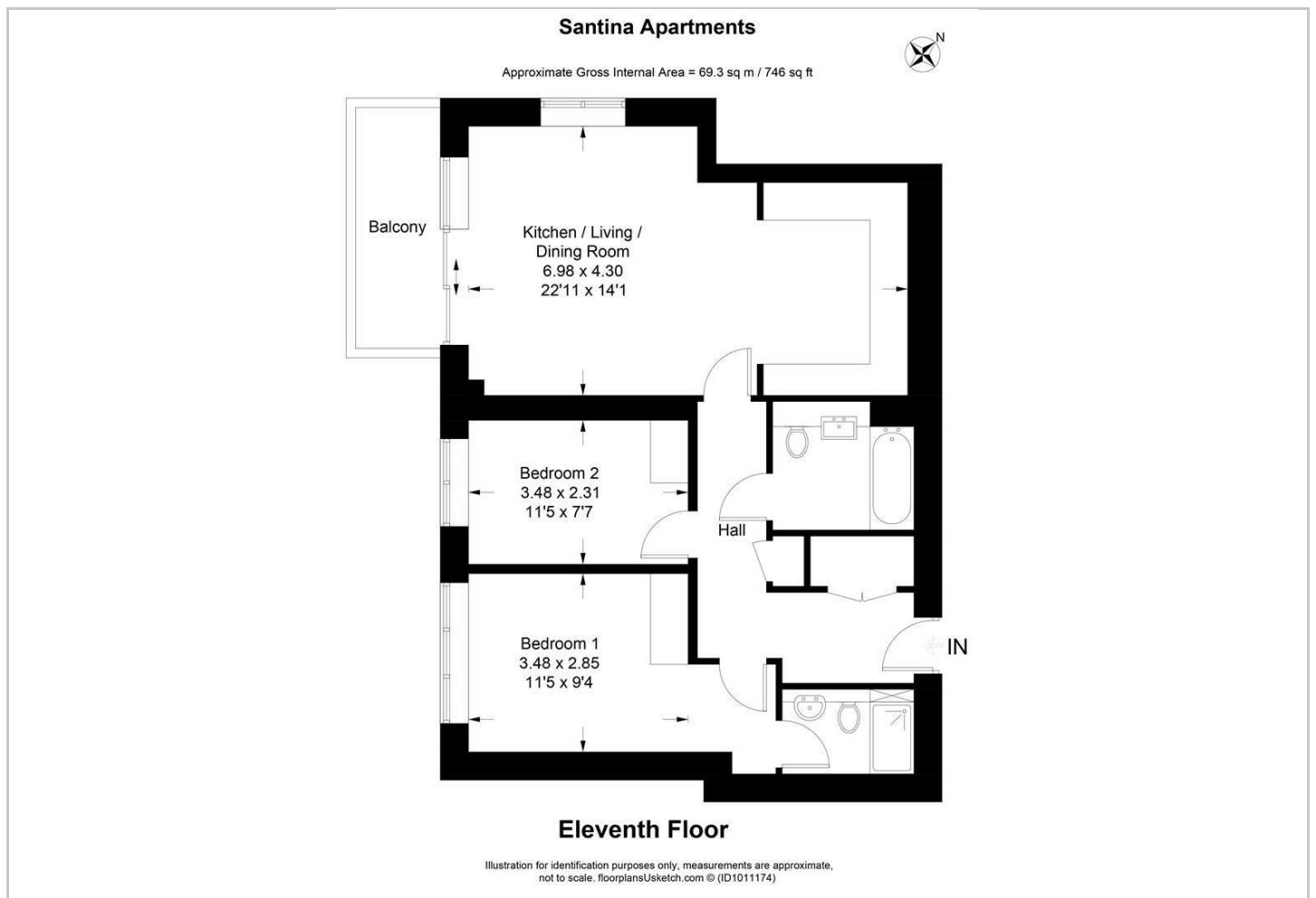
Hybrid Map



Terrain Map



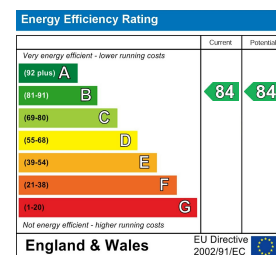
Floor Plan



Viewing

Please contact our Hirsch Estates Office on 020 3002 0587 if you wish to arrange a viewing appointment for this property or require further information.

Energy Efficiency Graph



These particulars, whilst believed to be accurate are set out as a general outline only for guidance and do not constitute any part of an offer or contract. Intending purchasers should not rely on them as statements of representation of fact, but must satisfy themselves by inspection or otherwise as to their accuracy. No person in this firm's employment has the authority to make or give any representation or warranty in respect of the property.