



Strode Road, SW6 6BL

£1,850 PCM



# Strode Road, SW6 6BL

£1,850 PCM



A two bedroom (with the option of turning one bedroom into a study), first floor conversion apartment conveniently located in a quiet residential cul-de-sac and within easy reach of local shops and amenities.

Accommodation comprises a bright front facing living room, modern kitchen with washing machine & fridge, two south facing double bedrooms with built-in wardrobes, separate bathroom with fitted shower over bath & WC. Gas central heating.

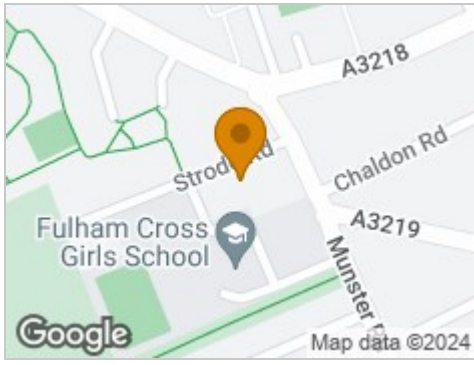
Strode Road is off Munster Road with its multitude of coffee shops and restaurants. The property is also a short walk from Lillie Road recreation ground and a number of transport links including, Parsons Green, Fulham Broadway, West Brompton, Barons Court and Hammersmith.

Council Tax Band: D (Hammersmith & Fulham)

Holding Deposit: £426



## Road Map



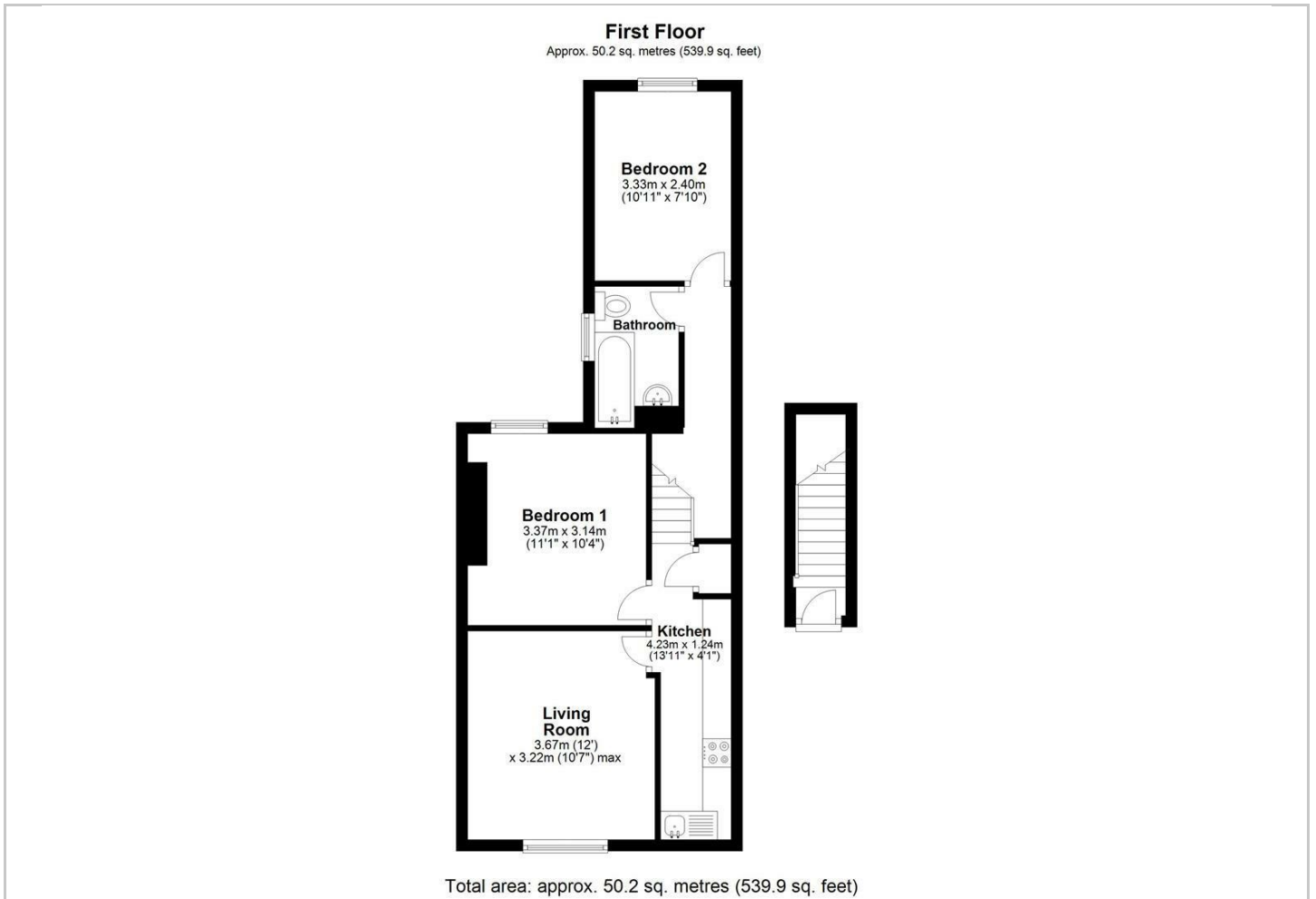
## Hybrid Map



## Terrain Map



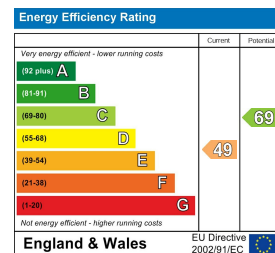
## Floor Plan



## Viewing

Please contact our Hirsch Estates Office on 020 3002 0587 if you wish to arrange a viewing appointment for this property or require further information.

## Energy Efficiency Graph



These particulars, whilst believed to be accurate are set out as a general outline only for guidance and do not constitute any part of an offer or contract. Intending purchasers should not rely on them as statements of representation of fact, but must satisfy themselves by inspection or otherwise as to their accuracy. No person in this firm's employment has the authority to make or give any representation or warranty in respect of the property.