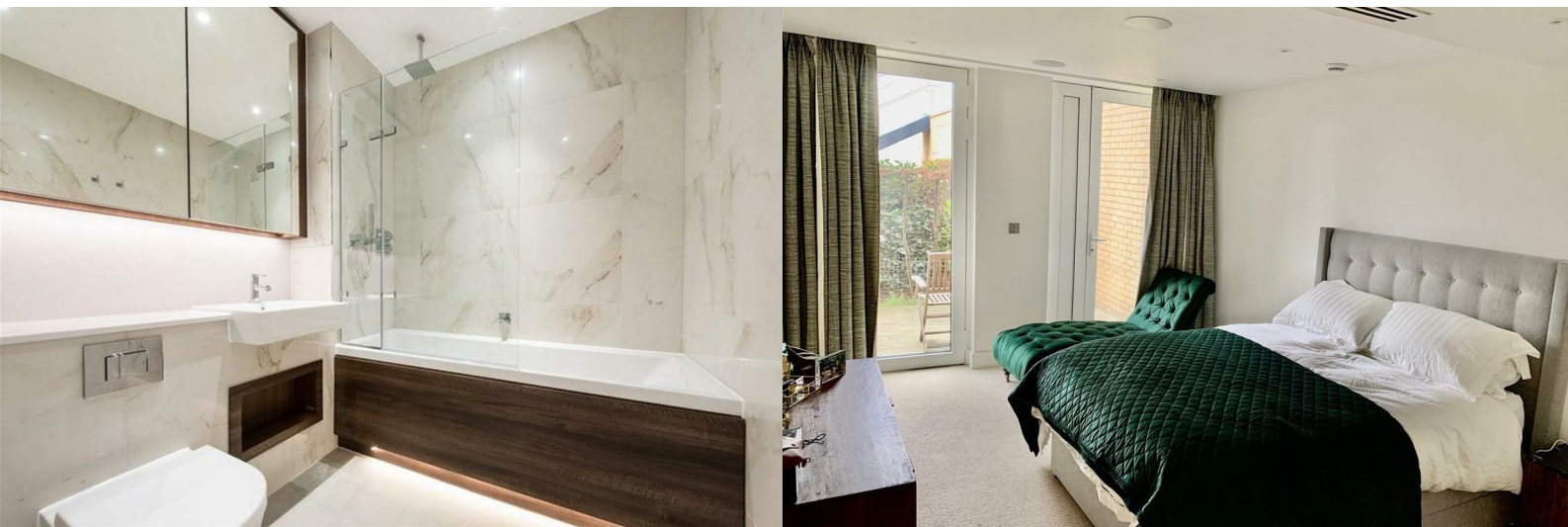




Ravensbourne Apartments, SW6 2GN

£2,300 PCM



Ravensbourne Apartments, SW6 2GN

£2,300 PCM



This apartment circa 624 sq. ft. is finished to an impressive standard throughout and comprises bright and spacious open plan living, kitchen and dining areas, a large double bedroom with fitted wardrobes, separate marble finish bathroom suite and large private terrace accessible by both the bedroom and living area.

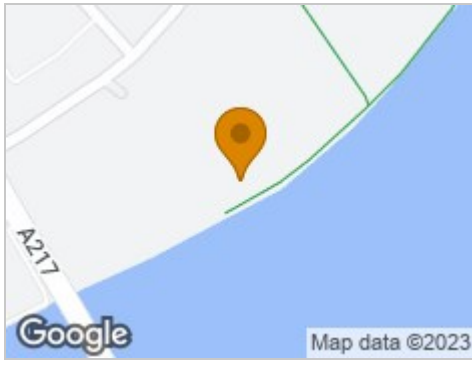
Additionally, the apartment benefits from floor to ceiling windows, underfloor heating throughout, surround sound, comfort cooling, secure underground parking and a wine fridge. The development benefits from 24 hr concierge, communal outside leisure facilities including gym, badminton court and table tennis tables and expansive gardens including a maze and water features.

The development sprawls over 8 acres and is arranged around beautifully landscaped private gardens. Fulham Riverside is ideally located for easy access to the popular bars, shops and restaurants of the Kings Road and Sloane Square. It is also a short walk from Chelsea Harbour Pier and Imperial Wharf Station (both 0.5 miles), which offer transport into the rest of Central London. For added convenience there is a large Sainsbury's located right on the doorstep.

Council Tax Band: G (Hammersmith & Fulham)
Holding Deposit: £530



Road Map



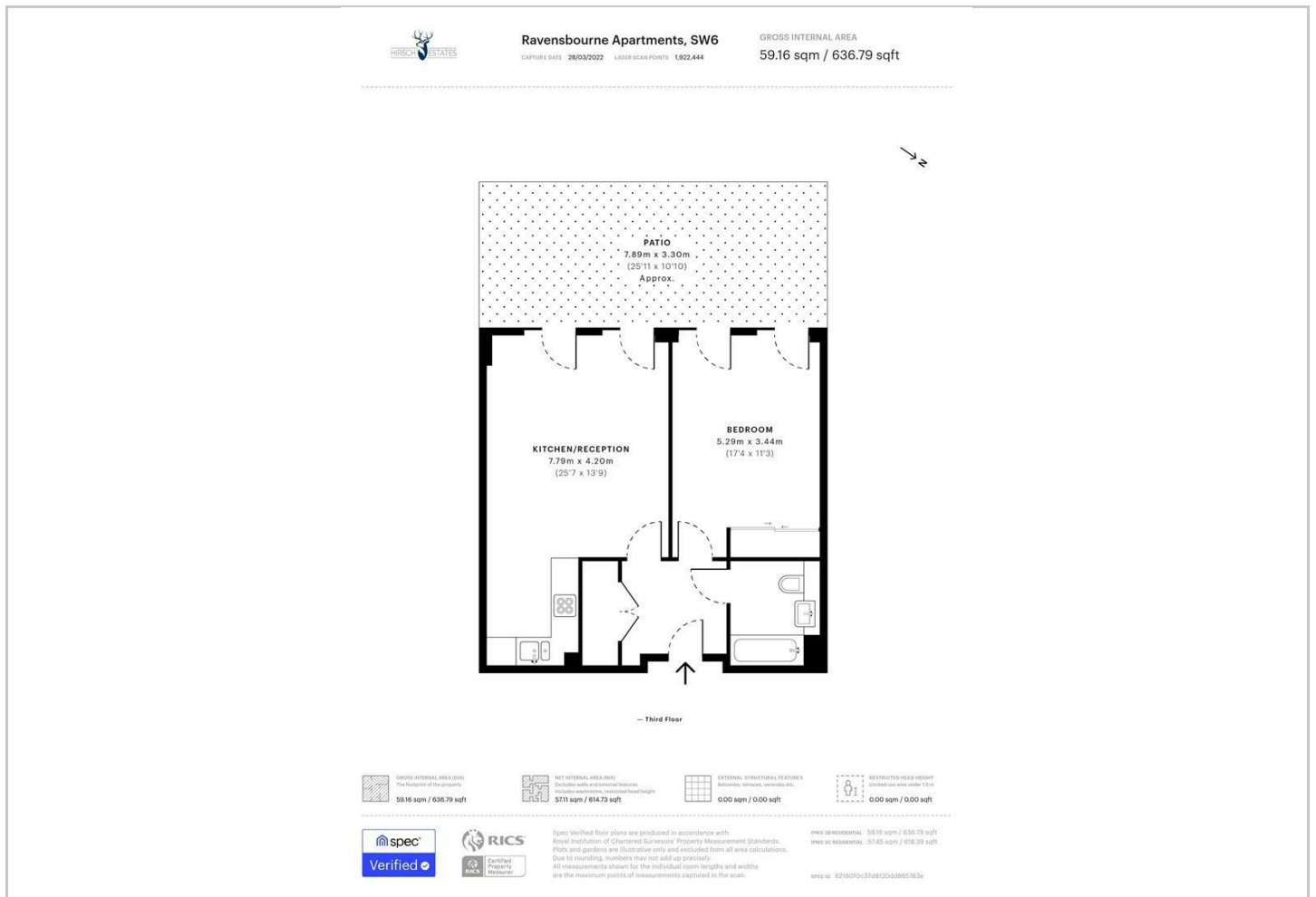
Hybrid Map



Terrain Map



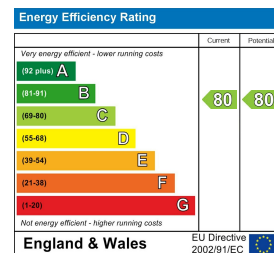
Floor Plan



Viewing

Please contact our Hirsch Estates Office on 020 3002 0587 if you wish to arrange a viewing appointment for this property or require further information.

Energy Efficiency Graph



These particulars, whilst believed to be accurate are set out as a general outline only for guidance and do not constitute any part of an offer or contract. Intending purchasers should not rely on them as statements of representation of fact, but must satisfy themselves by inspection or otherwise as to their accuracy. No person in this firm's employment has the authority to make or give any representation or warranty in respect of the property.