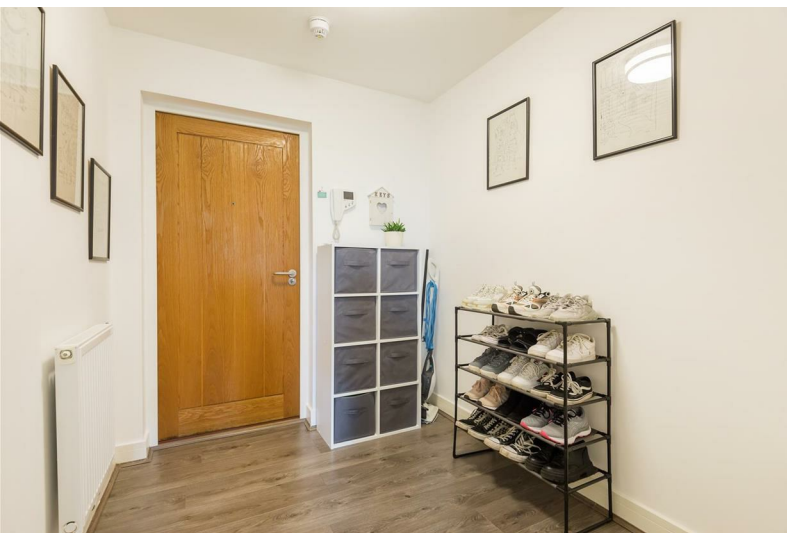




Middleton House, Horley, RH6 7BN

£1,150 PCM



Middleton House, Horley, RH6 7BN

£1,150 PCM

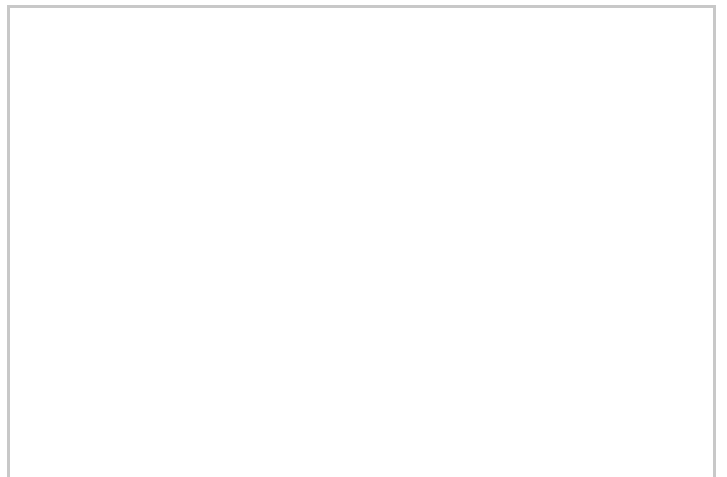


Middleton House is situated at the end of Horley High Street and is accessed via a secure video entry system. This larger than average first floor apartment offers 656 sq. ft. of living space and comprises entrance hall, open plan lounge and kitchen offering bright and modern living space, measuring in excess of 25'. The kitchen area is fully fitted with modern units, granite work surfaces, AEG appliances including electric hob, integrated fridge, freezer, washer/dryer, and dishwasher. The bedroom is also generously proportioned measuring an impressive 17'9 x 11'10.

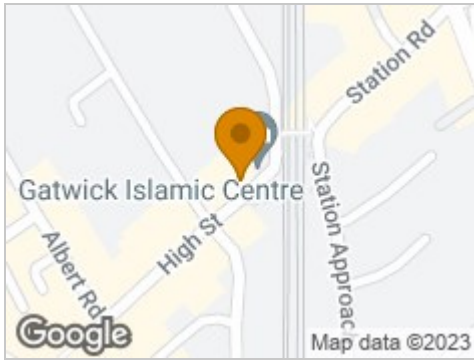
The property further benefits from gas central heating, double glazing & large triple wardrobe to bedroom.

Horley is a commuter belt town located on the Surrey border neighbouring London Gatwick airport. Situated on a direct railway line to Gatwick in 12 minutes, London Victoria in 34 minutes and Brighton in just under an hour. There are also excellent road links to London and Brighton via the M23.

Council Tax Band: B (Reigate & Banstead)
Holding Deposit: £265



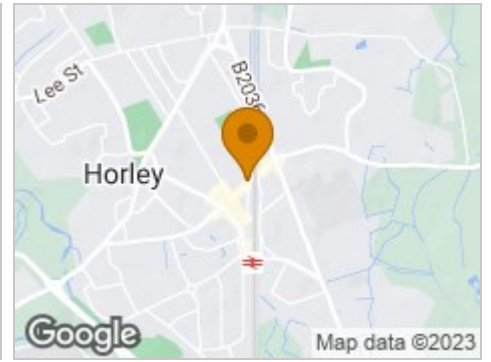
Road Map



Hybrid Map



Terrain Map



Floor Plan

Middleton House
643 sq.ft. (59.7 sq.m.) approx.

First Floor

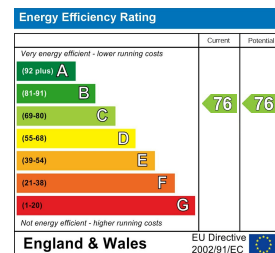
TOTAL FLOOR AREA : 643 sq.ft. (59.7 sq.m.) approx.

For illustrative purposes only. Decorative finishes, fixtures, fittings and furnishings do not represent the current state of the property. Measurements are approximate. Not to scale.
Made with Metropix © 2022

Viewing

Please contact our Hirsch Estates Office on 020 3002 0587 if you wish to arrange a viewing appointment for this property or require further information.

Energy Efficiency Graph



These particulars, whilst believed to be accurate are set out as a general outline only for guidance and do not constitute any part of an offer or contract. Intending purchasers should not rely on them as statements of representation of fact, but must satisfy themselves by inspection or otherwise as to their accuracy. No person in this firm's employment has the authority to make or give any representation or warranty in respect of the property.