



Metro Central Heights, London, SE1 6BB

£2,000 PCM



Metro Central Heights, London, SE1 6BB

£2,000 PCM



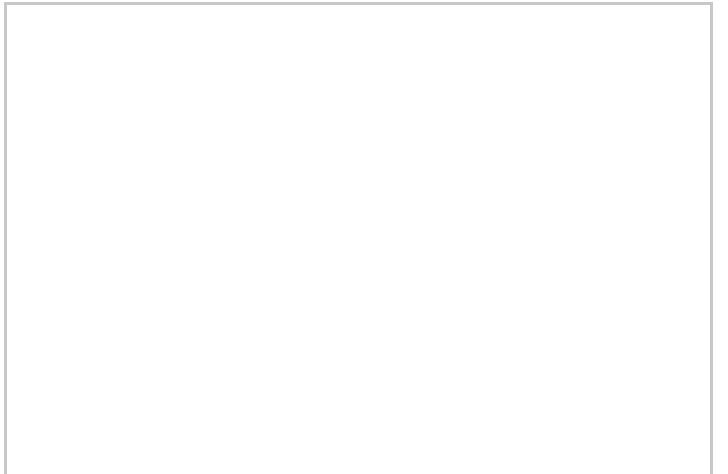
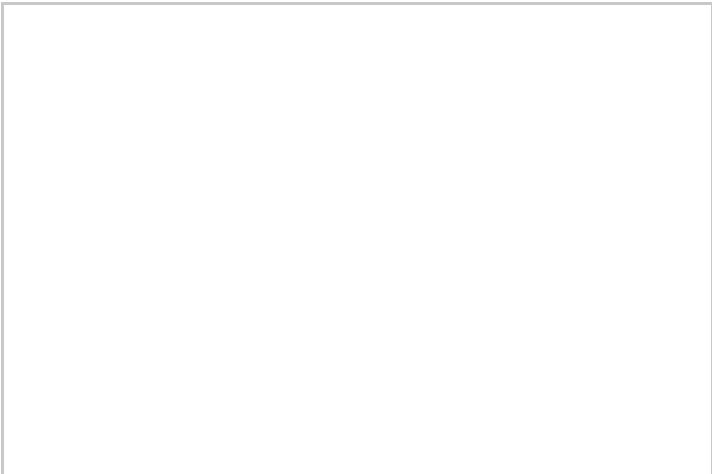
This apartment measures circa 649 sq. ft. and features floor-to-ceiling windows affording plenty of natural light and fabulous views. The property comprises entrance hall with large storage cupboards, living room and separate kitchen, two double bedrooms (master with built-in wardrobe) and large modern shower room.

The property benefits from recently fitted double glazed windows throughout, Amtico flooring, energy saver heating and secure parking.

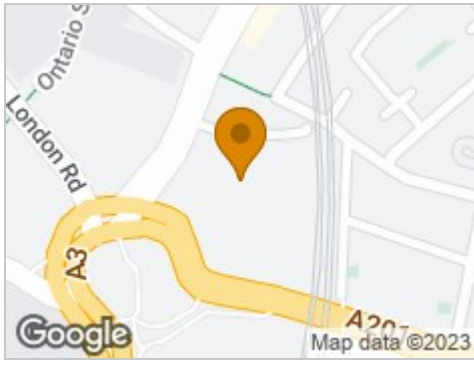
Metro Central Heights is a highly sought after block within a minute's walk from Elephant and Castle station serving both the Bakerloo and Northern lines making it an ideal location for professionals working in the City. Various amenities are located right on the door step of this development as well as access to a residents' only gym, indoor swimming pool, jacuzzi and a 24 hour concierge service.

This property is superbly located for popular destinations such as Borough Market and the Southbank centre. The closest supermarket is Southwark Morrison's, which is less than a mile away. Waitrose (South Bank Tower, less than a mile away), Tesco (Kennington, less than a mile away) and Asda (Old Kent Road, about 1.4 miles away) are also within easy reach.

Council Tax Band: D (Southwark Council)
Holding Deposit: £461



Road Map



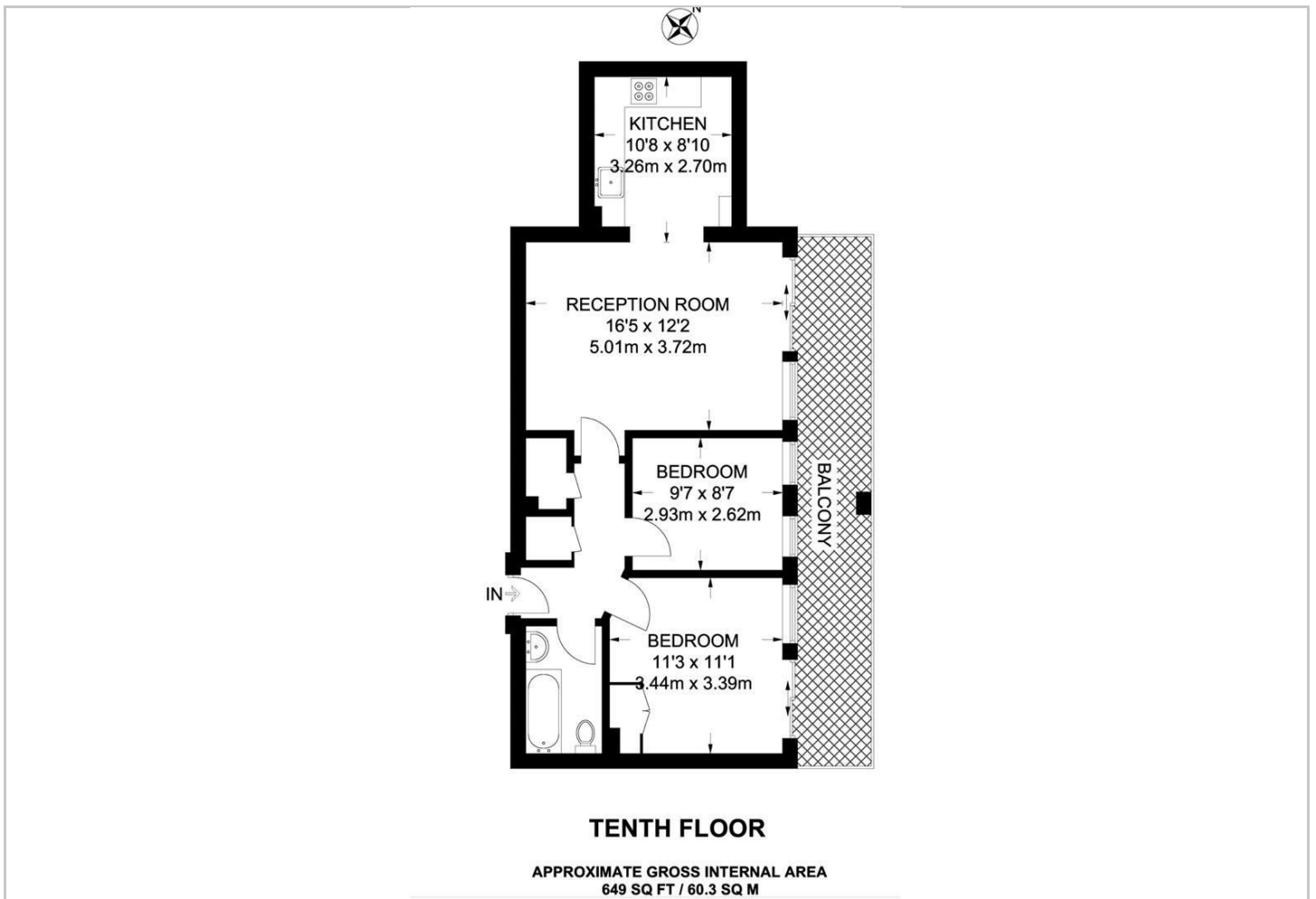
Hybrid Map



Terrain Map



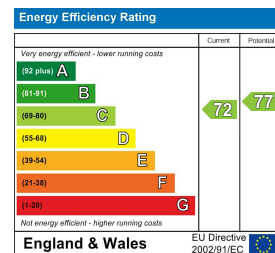
Floor Plan



Viewing

Please contact our Hirsch Estates Office on 020 3002 0587 if you wish to arrange a viewing appointment for this property or require further information.

Energy Efficiency Graph



These particulars, whilst believed to be accurate are set out as a general outline only for guidance and do not constitute any part of an offer or contract. Intending purchasers should not rely on them as statements of representation of fact, but must satisfy themselves by inspection or otherwise as to their accuracy. No person in this firm's employment has the authority to make or give any representation or warranty in respect of the property.