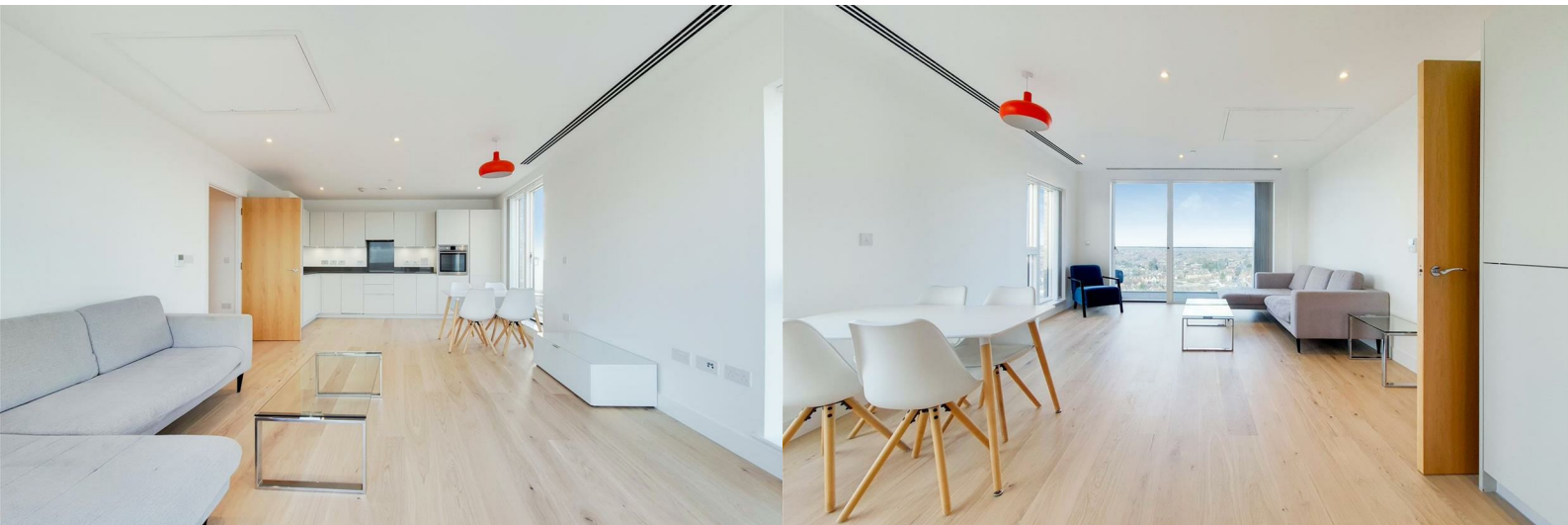




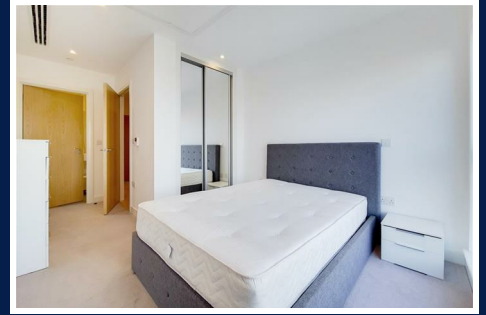
## Santina Apartments, Croydon, CR0 6FH

£2,100 PCM



# Santina Apartments, Croydon, CR0 6FH

£2,100 PCM

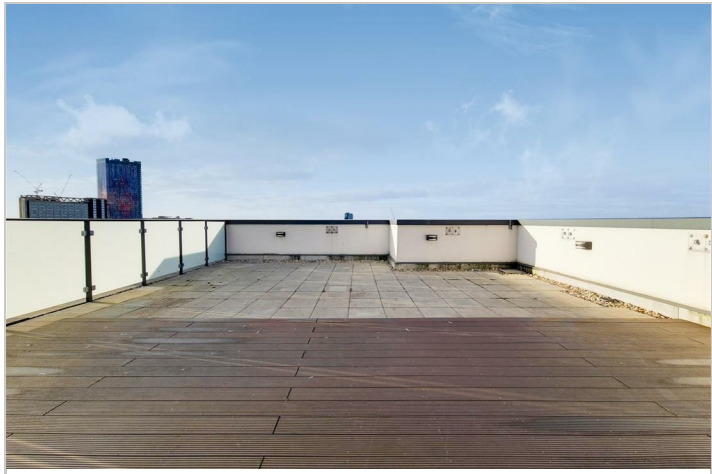
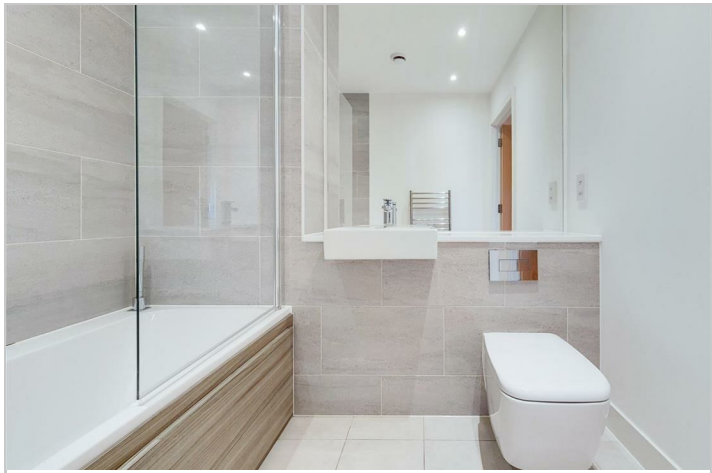


**MUST BE SEEN** - This stunning 13th floor apartment is finished to a high standard throughout and offers good sized open plan living space with fully fitted modern kitchen area with integrated appliances and ample storage, two double bedrooms (master with en-suite shower) and a separate stylish bathroom suite. There is a storage cupboard to hallway and further large utility cupboard housing the heating system and washer/dryer. The apartment also features fitted blinds throughout, dual aspect entertaining area with balcony and large private terrace with spectacular views across the City.

Residents benefit from a concierge service, well equipped fitness suite, lift access, cycle storage and gated communal gardens. Parking is available at an additional cost.

Transport links are key with East Croydon train station just moments away and providing direct links to London Bridge (16 mins), London Victoria (17 mins), St. Pancras Int (30 mins), Gatwick Airport (15 mins) and the south coast. Other local facilities include, the Tramlink network with links to Wimbledon and Beckenham, multiple bus routes and the popular BOXPARK with its lively and vibrant atmosphere.

**\*\*\* AVAILABLE IMMEDIATELY \*\*\***



## Road Map



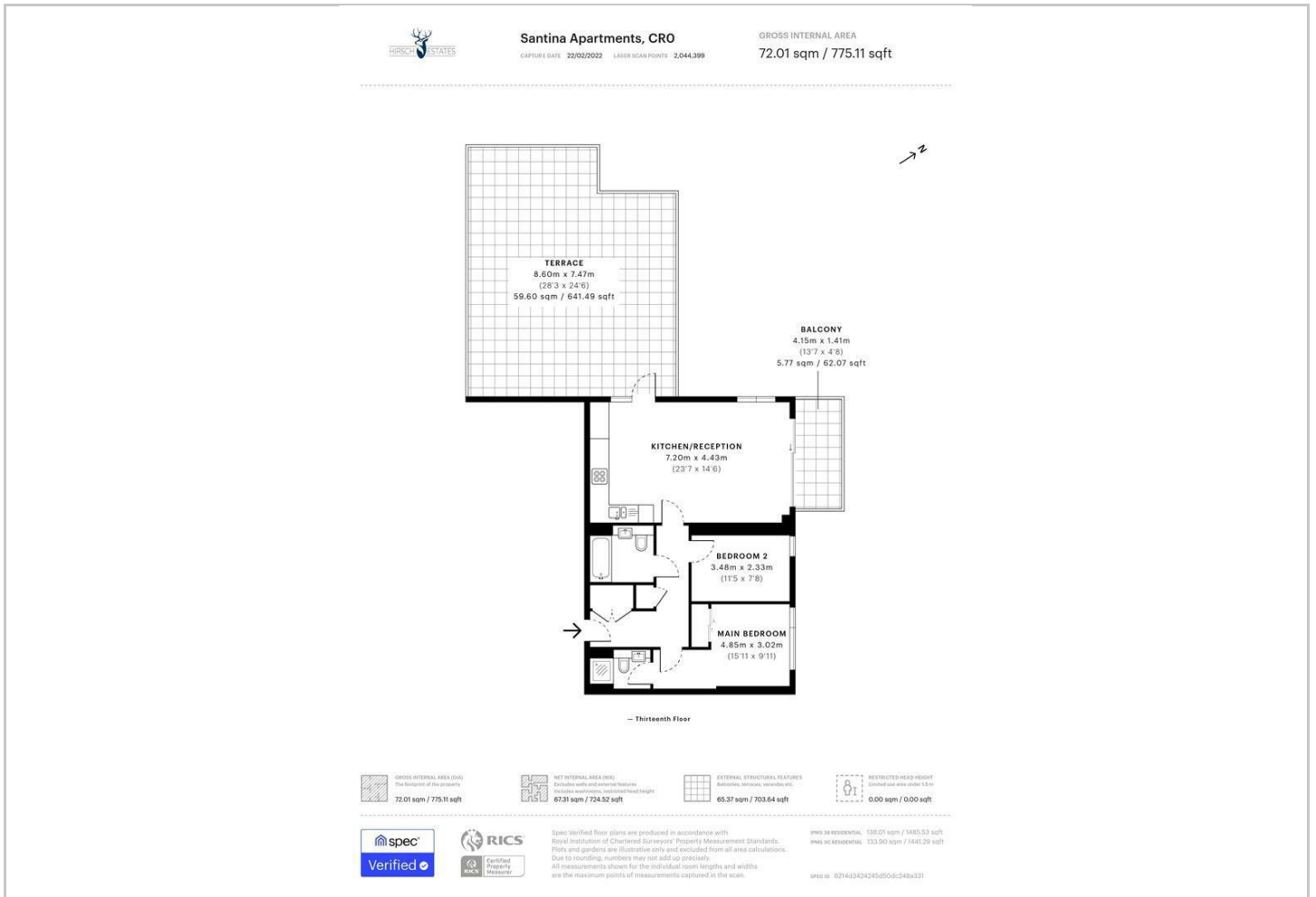
## Hybrid Map



## Terrain Map



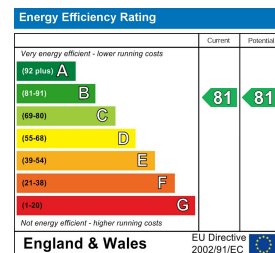
## Floor Plan



## Viewing

Please contact our Hirsch Estates Office on 020 3002 0587 if you wish to arrange a viewing appointment for this property or require further information.

## Energy Efficiency Graph



These particulars, whilst believed to be accurate are set out as a general outline only for guidance and do not constitute any part of an offer or contract. Intending purchasers should not rely on them as statements of representation of fact, but must satisfy themselves by inspection or otherwise as to their accuracy. No person in this firm's employment has the authority to make or give any representation or warranty in respect of the property.