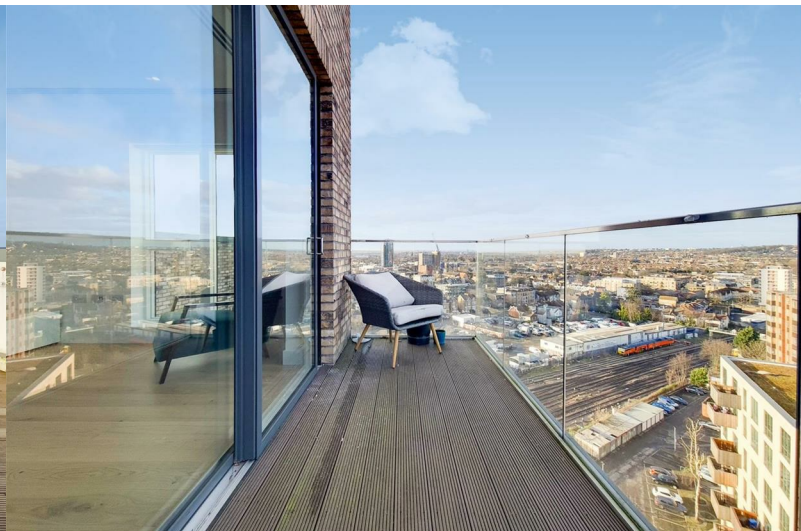
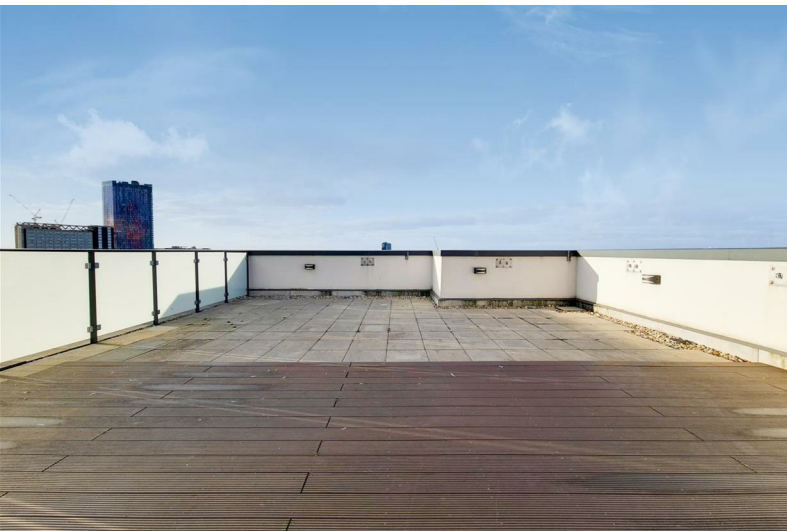




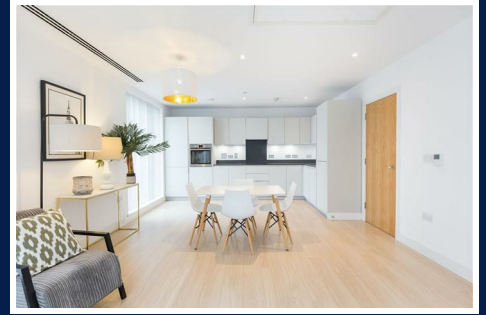
## Santina Apartments, Croydon, CR0 6FH

£2,000 PCM



# Santina Apartments, Croydon, CR0 6FH

£2,000 PCM



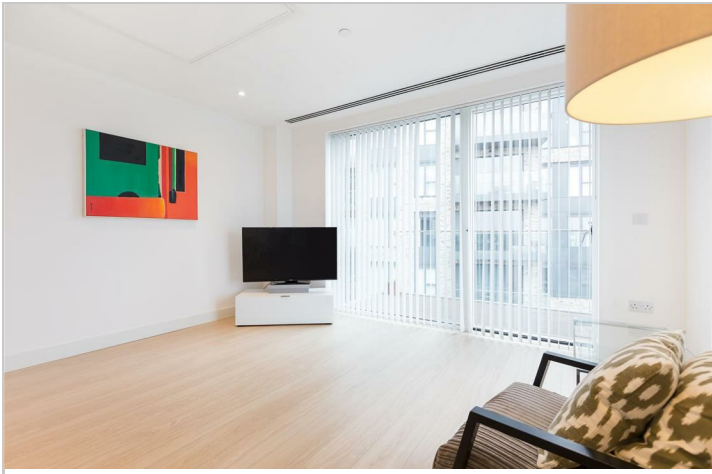
The natural hub of this beautiful apartment is the large open-plan lounge and kitchen area, featuring double aspect floor-to-ceiling windows, balcony and a large private terrace enjoying spectacular views across the City.

A welcoming central hall includes a wall mounted video entry system, large utility cupboard housing heating system and washer/dryer, separate useful storage cupboard, two double bedrooms (master with en-suite shower) and a separate contemporary bathroom.

Residents benefit from a concierge service, well equipped fitness suite, lift access, cycle storage and gated communal gardens. Parking is available at an additional cost.

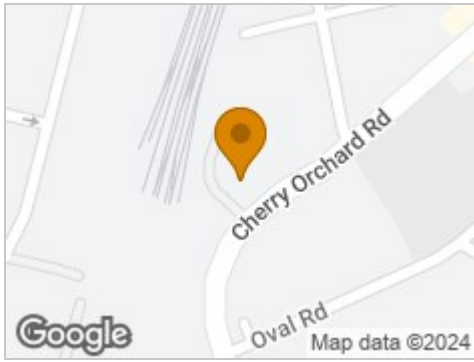
Transport links are key with East Croydon train station just moments away and providing direct links to London Bridge (16 mins), London Victoria (17 mins), St. Pancras Int (30 mins), Gatwick Airport (15 mins) and the south coast. Other local facilities include, the Tramlink network with links to Wimbledon and Beckenham, multiple bus routes and the popular BOXPARK with its lively and vibrant atmosphere.

Council Tax Band: E (London Borough of Croydon)  
Holding Deposit: £461





### Road Map



### Hybrid Map



### Terrain Map



### Floor Plan

### Santina Apartments, Croydon

Approximate Gross Internal Area = 70.7 sq m / 761 sq ft

**Thirteenth Floor**

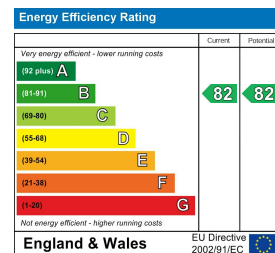
Roof Terrace

Illustration for identification purposes only, measurements are approximate, not to scale. floorplansUsketch.com © (ID920826)

### Viewing

Please contact our Hirsch Estates Office on 020 3002 0587 if you wish to arrange a viewing appointment for this property or require further information.

### Energy Efficiency Graph



These particulars, whilst believed to be accurate are set out as a general outline only for guidance and do not constitute any part of an offer or contract. Intending purchasers should not rely on them as statements of representation of fact, but must satisfy themselves by inspection or otherwise as to their accuracy. No person in this firm's employment has the authority to make or give any representation or warranty in respect of the property.