

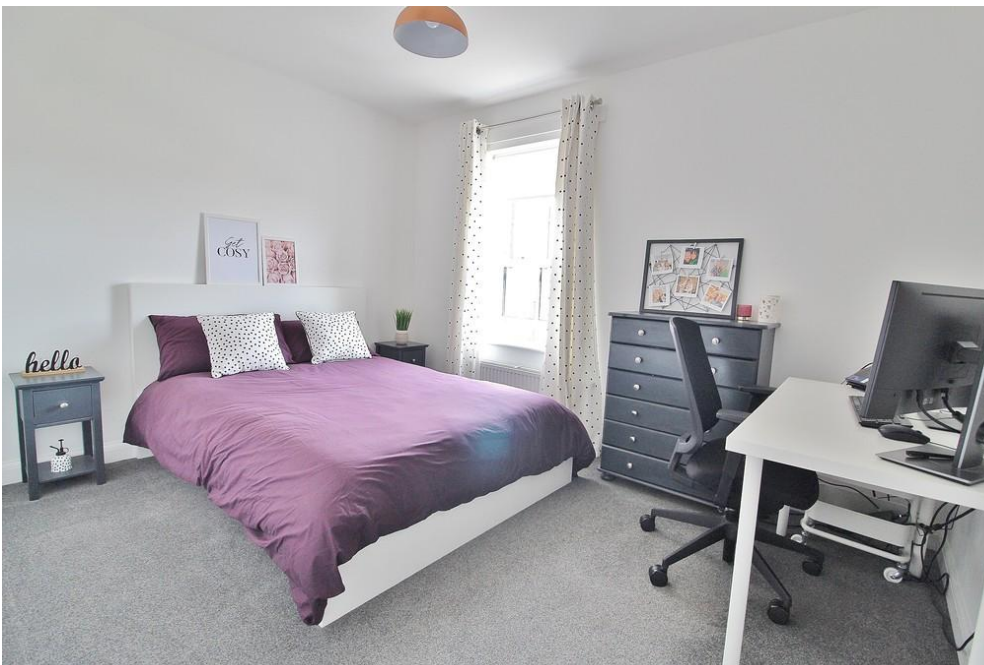


£88,000
Painters Crescent
Waterlooville, PO7 3BZ

PROPERTY SUMMARY

With a full price of £220,000, this wonderful two bedroom 2nd floor apartment is offered for sale on a SHARED OWNERSHIP basis. £88,000 represents a 40% share of the property and the residual rent at this level would be £302.50 pcm. The monthly service charge is £168.79 and ground rent is £150 pa. The apartment has 2 well proportioned bedrooms, a modern fitted kitchen, modern bathroom suite and allocated parking. To arrange your viewing contact us today as sole agent.





ENTRANCE HALL Radiator, walk in storage cupboard, utility cupboard housing washing machine, access to loft, doors to:

BEDROOM 1 19' 7 Max" x 10' 4 Max" (5.97m x 3.15m)
Windows to front and rear aspects, radiator.

BEDROOM 2 11' 9" x 8' 11" (3.58m x 2.72m) Window to rear aspect, radiator.

BATHROOM Heated towel rail, extractor fan, panelled bath with shower over, hand wash basin, W.C, tiled flooring.

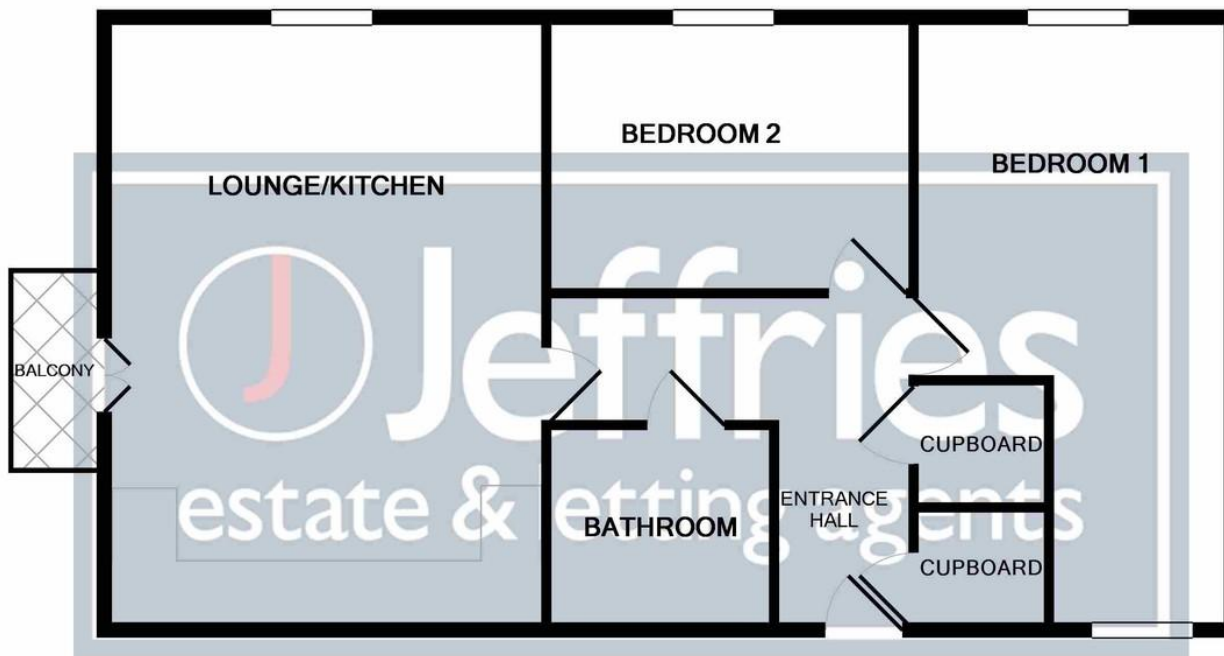
LOUNGE/KITCHEN 19' 6" x 14' 1" (5.94m x 4.29m) Windows to side aspect, double doors to front access and balcony, 2 radiators, range of fitted cupboards, units and work surfaces, integrated dishwasher, fridge, freezer, oven, hob and extractor, sink unit, wall mounted boiler.

BALCONY

OUTSIDE

PARKING & COMMUNAL AREAS Allocated parking space, communal bin area and bike shed.

LEASE & SERVICE CHARGES 121 year lease, £150 pa Ground Rent, monthly Service Charge £168.79.



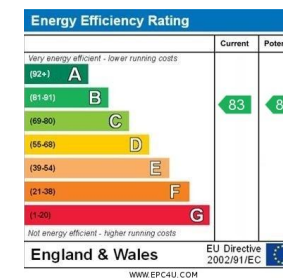
Whilst every attempt has been made to ensure the accuracy of the floor plan contained here, measurements of doors, windows, rooms and any other items are approximate and no responsibility is taken for any error, omission, or mis-statement. This plan is for illustrative purposes only and should be used as such by any prospective purchaser. The services, systems and appliances shown have not been tested and no guarantee as to their operability or efficiency can be given
 Made with Metropix ©2019

LOCAL AUTHORITY
 Winchester City Council

TENURE
 Leasehold

COUNCIL TAX BAND
 Band B

VIEWINGS
 By prior appointment only



Agents Note: Whilst every care has been taken to prepare these particulars, they are for guidance purposes only. All measurements are approximate and are for general guidance purposes only and whilst every care has been taken to ensure their accuracy, they should not be relied upon and potential buyers/tenants are advised to recheck the measurements



OFFICE ADDRESS
 226 London Road, Waterlooville,
 Hampshire, PO7 7HP

CONTACT
 023 9223 1100
 waterlooville@jeffries.co.uk
 www.jdea.co.uk