

GUIDE PRICE

**£160,000 - £170,000**

**Stokes Bay**

Alverstoke, Hampshire PO12 2QX

## PROPERTY SUMMARY

Guide Price £160,000 - £170,000\*\*\* We are delighted to bring to the market this two bedroom Mobile Home located just off Stokes Bay Seafront. The property has planning permission to extend and benefits from residents parking, lounge with dual aspect windows, separate kitchen, modern shower room, master bedroom with fitted wardrobes and its own private landscaped enclosed garden. Please contact the Gosport team to arrange your internal viewing.





#### LOUNGE

11' 5" x 9' 8" (3.50m x 2.97m)

#### KITCHEN

9' 8" x 7' 9" (2.96m x 2.38m)

#### BEDROOM ONE

9' 5" x 9' 8" (2.88m x 2.96m)

#### BEDROM TWO

6' 5" x 4' 2" (1.96m x 1.28m)

#### BATHROOM

6' 4" x 3' 10" (1.95m x 1.19m)

#### AGENTS NOTES

Perpetuity Lease

Charges £42 Per Week including water.

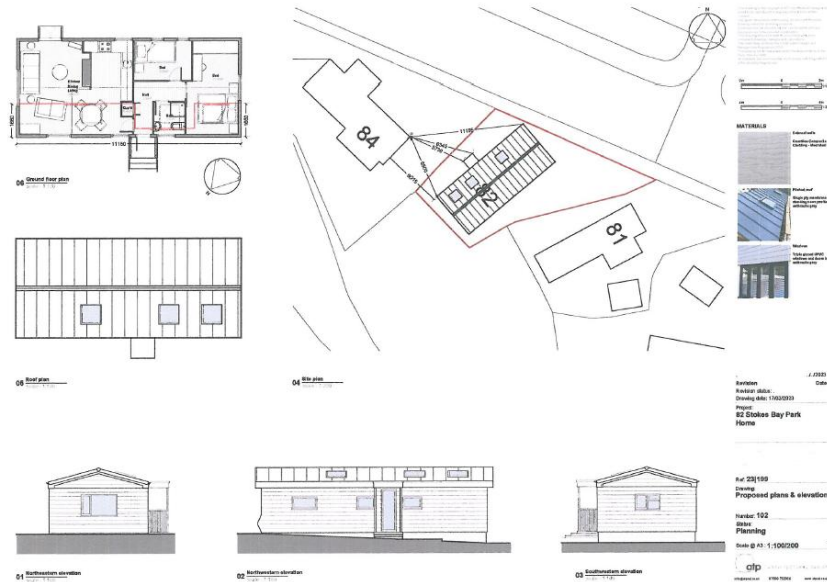
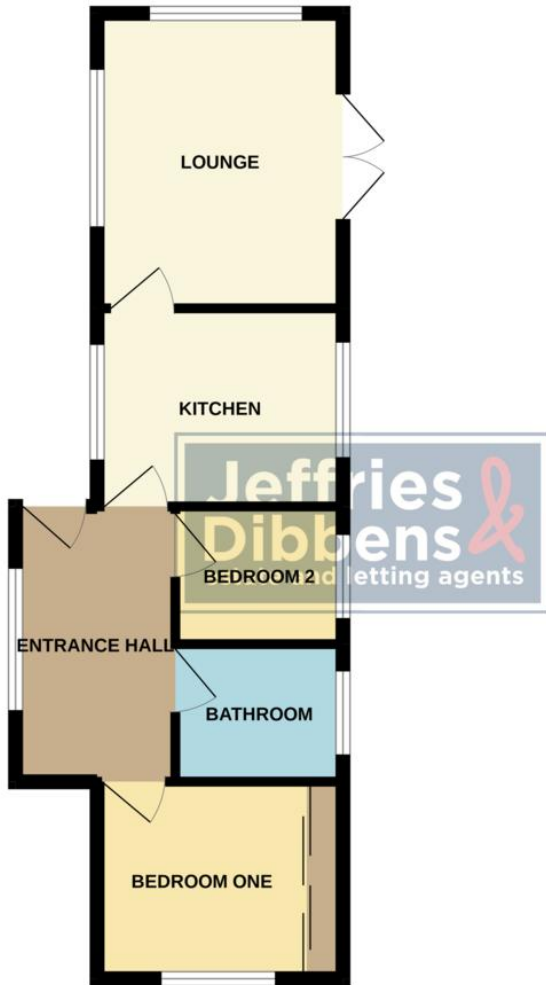
Council Tax band A

Cash Buyers Only

Planning to Extend



GROUND FLOOR



**LOCAL AUTHORITY**

Gosport

**TENURE**

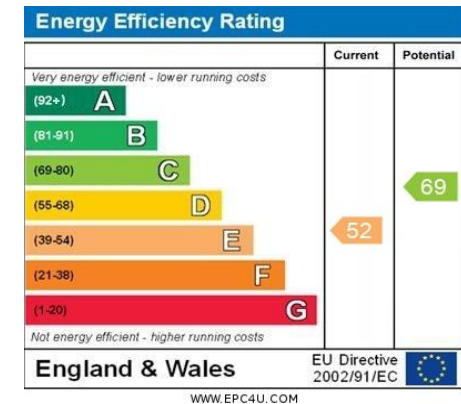
Leasehold

**COUNCIL TAX BAND**

Band A

**VIEWINGS**

By prior appointment only



Agents Note: Whilst every care has been taken to prepare these particulars, they are for guidance purposes only. All measurements are approximate and are for general guidance purposes only and whilst every care has been taken to ensure their accuracy, they should not be relied upon and potential buyers/tenants are advised to recheck the measurements



**OFFICE ADDRESS**

126 High Street, Gosport,  
Hampshire, PO12 1DU

**CONTACT**

02392 602 155  
gosport@dibbensproperty.co.uk  
www.jdea.co.uk