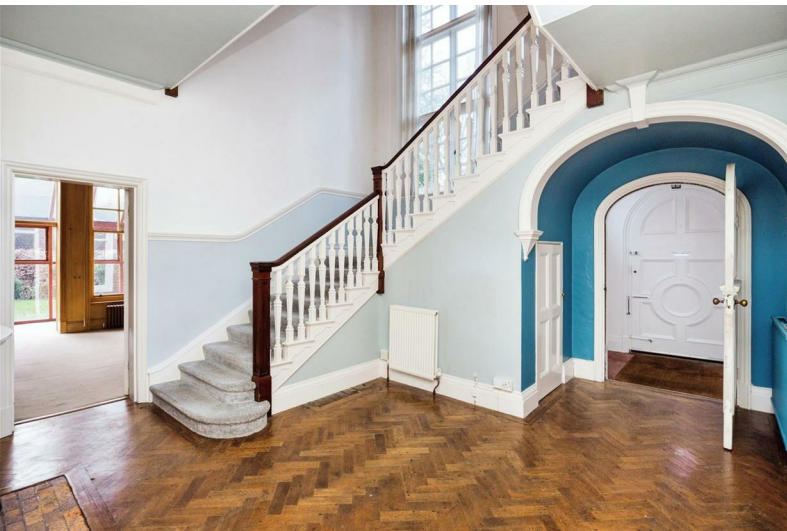




Dormans House West Furzefield Chase

, Dormans Park, RH19 2LY

Asking price £1,250,000



Dormans House West Furzefield Chase

, Dormans Park, RH19 2LY

Asking price £1,250,000



Dormans House West stands as a testament to the timeless elegance and rich history of its origins. Built circa 1900 by none other than Dr. Watson, esteemed friend of Sir Arthur Conan Doyle, this substantial wing of a country house exudes charm and character at every turn.

Property Overview:

Architectural Legacy: Crafted with brick elevations under a tiled roof, the house emanates a sense of enduring grandeur, reminiscent of its Edwardian heritage.

Gracious Reception: Step through the front door into an inviting Entrance Hallway, which leads seamlessly into a spacious Reception Hall adorned with an open Staircase rising majestically to a Galleried Landing.

Elegant Living Spaces: The ground floor unfolds to reveal a Drawing Room boasting full-length windows that bathe the space in natural light, while a book shelved Sitting/Dining Room offers a cozy retreat for relaxation. A Conservatory beckons with its verdant views, leading to a well-fitted Kitchen/Breakfast Room adorned with an Aga stove, a cherished addition since 1976.

Private Retreats: Ascend the staircase to the first floor, where a striking galleried landing with full-height windows leads to three bedrooms and a bathroom. Further exploration reveals a smaller galleried landing transformed into an Office area, offering panoramic views of the garden and providing access to two additional bedrooms and a second bathroom.

Outdoor Haven:

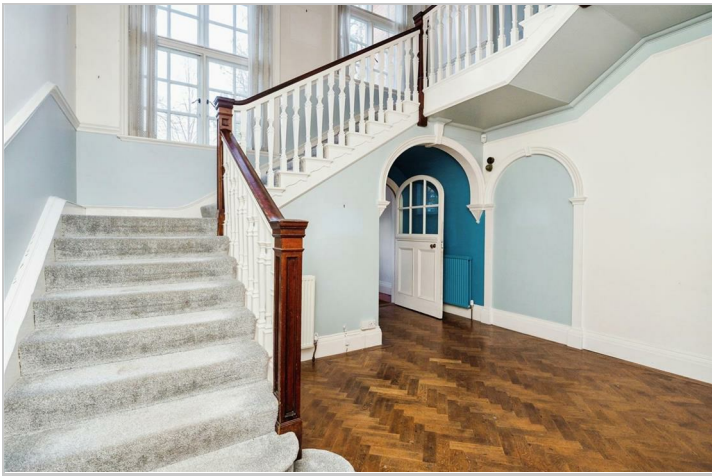
Double Garage: Accessible through a side Lobby from the kitchen, the double Garage boasts solar panels on its roof, embodying a commitment to sustainable living.

Expansive Driveway: The expanded driveway offers ample parking space, shielded from the road by verdant shrubbery, ensuring both privacy and convenience.

Enchanting Gardens: A true highlight of the property, the rear classical garden welcomes through a pillared verandah and a flagstone terrace. Stone steps lead down to a sheltered lower lawn bordered by beech hedging, featuring a charming ensemble of a small greenhouse, shed, and compost boxes. A wild garden at the lower end of the grounds captivates with its natural allure, while a small gravel garden, pond, and water feature adorn the western side. A private upper lawn area, adorned with Camellias and striking Japanese Maples, offers a serene sanctuary for contemplation and relaxation.

Conclusion

Dormans House West stands as a timeless retreat, marrying historic charm with modern comfort. From its illustrious origins to its enchanting gardens, this property offers a rare opportunity to embrace the quintessential essence of country estate living.



Road Map



Hybrid Map



Terrain Map



Floor Plan



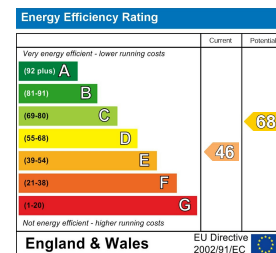
Total floor area 338.5 m² (3,644 sq.ft.) approx

This floor plan is for illustrative purposes only. It is not drawn to scale. Any measurements, floor areas (including any total floor area), openings and orientation are approximate. No details are guaranteed, they cannot be relied upon for any purpose and they do not form part of any agreement. No liability is taken for any error, omission or misstatement. A party must rely upon its own inspection(s).
Powered by www.focalagent.com

Viewing

Please contact our Crowborough Office on 01892 280435 if you wish to arrange a viewing appointment for this property or require further information.

Energy Efficiency Graph



These particulars, whilst believed to be accurate are set out as a general outline only for guidance and do not constitute any part of an offer or contract. Intending purchasers should not rely on them as statements of representation of fact, but must satisfy themselves by inspection or otherwise as to their accuracy. No person in this firm's employment has the authority to make or give any representation or warranty in respect of the property.