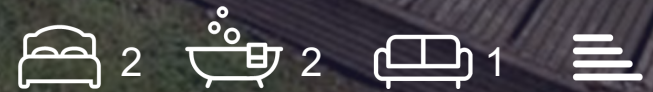


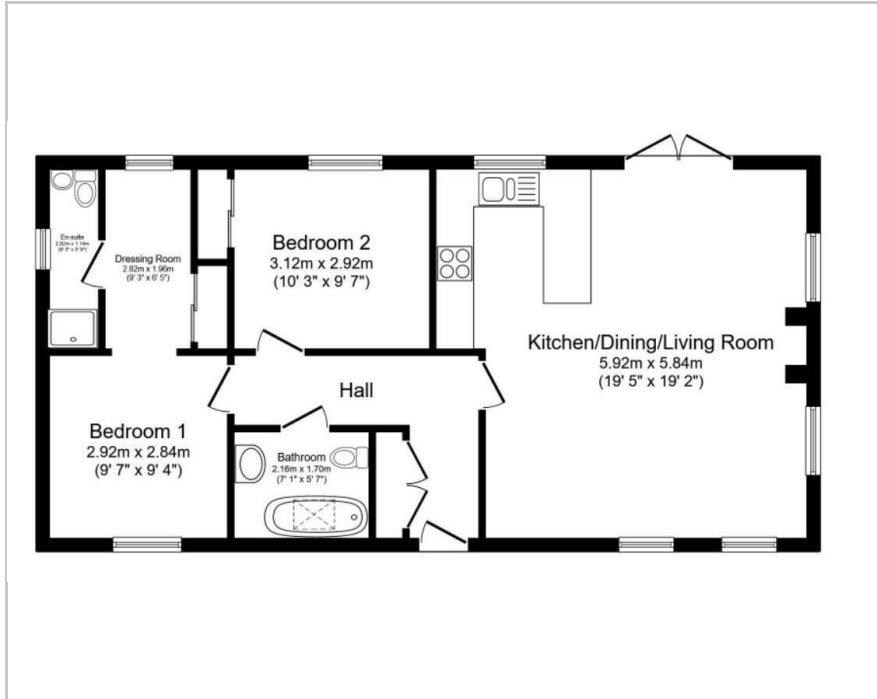
**PART  
EXCHANGE  
AVAILABLE**

Golden Cross Park Golden Cross, Hailsham, BN27 4AW

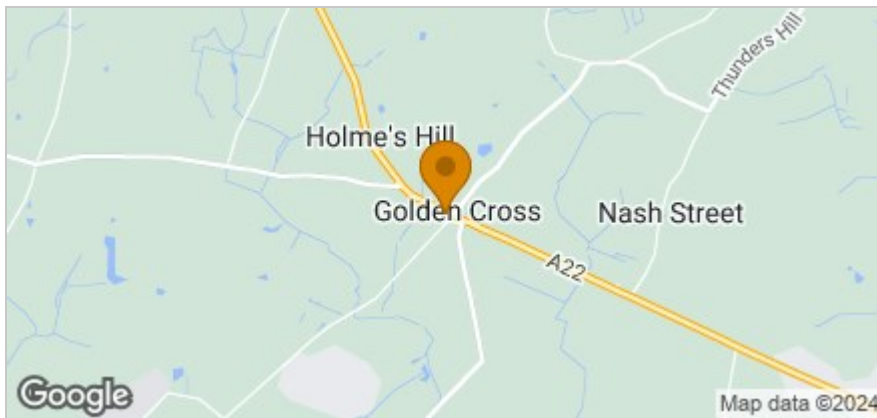
Guide price £200,000



## Floor Plan



## Area Map



## Accommodation

- TWO DOUBLE BEDROOMS
- SPACIOUS LIVING AREAS
- MODERN KITCHEN
- GAS CENTRAL HEATING
- GATED DEVELOPMENT
- FULL 12 MONTH RESIDENTIAL
- PARKING & PRIVATE DECK
- DESIGNED FOR OVER 45's
- PART EXCHANGE AVAILABLE
- ENERGY EFFICIENT

## Viewing

Please contact our Crowborough Office on 01892 280435 if you wish to arrange a viewing appointment for this property or require further information.

## Energy Efficiency Graph



These particulars, whilst believed to be accurate are set out as a general outline only for guidance and do not constitute any part of an offer or contract. Intending purchasers should not rely on them as statements of representation of fact, but must satisfy themselves by inspection or otherwise as to their accuracy. No person in this firm's employment has the authority to make or give any representation or warranty in respect of the property.