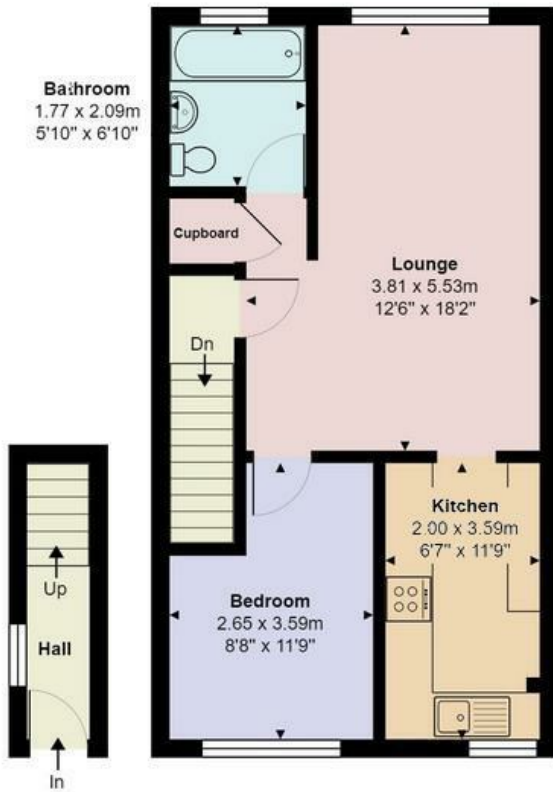




7A Park Road, Hoddesdon, EN11 8PU

£1,100 PCM

- One Bedroom Maisonette
- Split Level
- Own Entrance
- First Floor
- Close to Town Centre & Barclay Park
- Gas Central Heating



Directions

Viewings

Viewings by arrangement only. Call 01992 470335 to make an appointment.

Council Tax Band

EPC Rating:

Energy Efficiency Rating		
	Current	Potential
<i>Very energy efficient - lower running costs</i>		
(92 plus) A		
(81-91) B		
(69-80) C		
(55-68) D		
(39-54) E		
(21-38) F		
(1-20) G		
<i>Not energy efficient - higher running costs</i>		
England & Wales	EU Directive 2002/91/EC	