



## Bren Court, Enfield

Asking Price £275,000

- Two Bedroom Ground Floor Apartment
- Fitted Kitchen
- En Suite To Master
- Long Lease - 125 Years.
- Spacious Living Room
- Popular Enfield Island Village Development

# Bren Court, Enfield

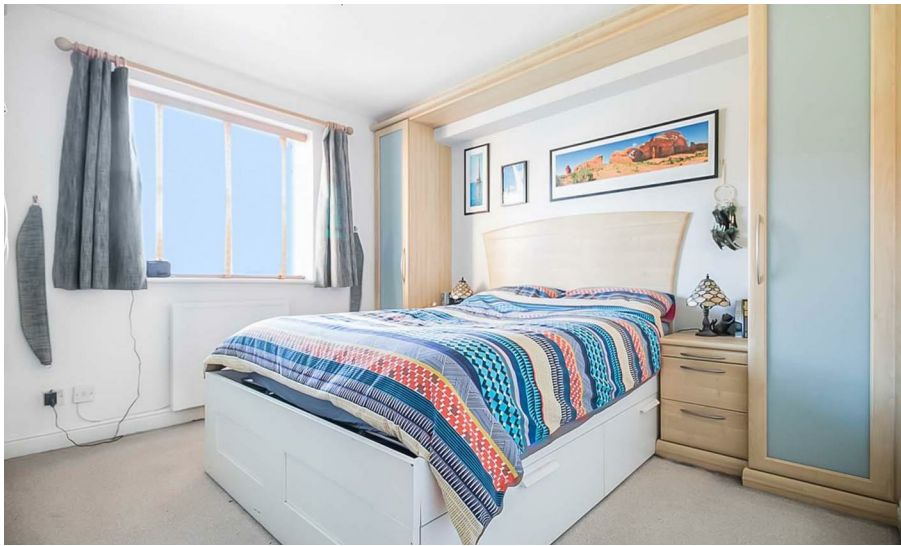
Anthony Davies brings to market a two bedroom two bathroom ground floor apartment on the popular Enfield Island Village development. This property is very well maintained throughout and boasts a very spacious lounge, fitted kitchen, en-suite to master bedroom, modern family bathroom and new electric heating throughout. This property also benefits from a new lease of 125 years.

Ideal first time or investment purchase, book your viewings today.

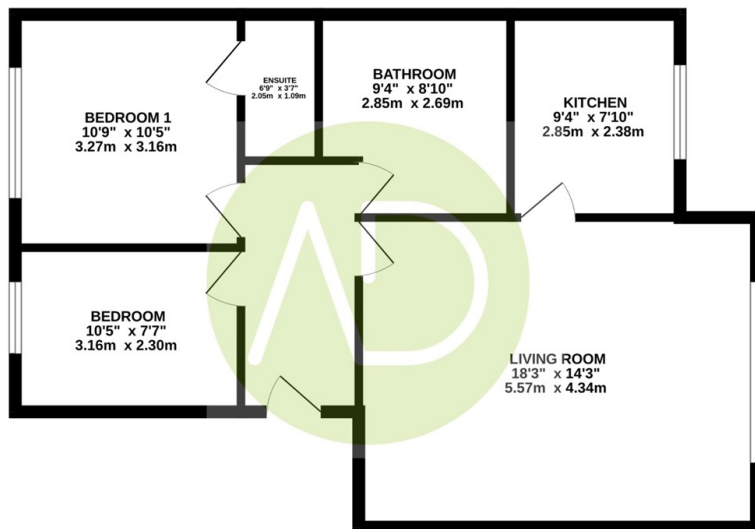


Council Tax Band:





**GROUND FLOOR**  
687 sq.ft. (63.8 sq.m.) approx.



TOTAL FLOOR AREA: 687 sq.ft. (63.8 sq.m.) approx.  
Whilst every attempt has been made to ensure the accuracy of the floorplans contained here, measurements of doors, windows, rooms and any other items are approximate and no responsibility is taken for any error, omission or mis-statement. This plan is for illustrative purposes only and should be used as such by any prospective purchaser. The services, systems and appliances shown have not been tested and no guarantee as to their operability or efficiency can be given.  
Made with Lettoplan ©2023

## Viewings

Viewings by arrangement only. Call 01992 470335 to make an appointment.



Energy Efficiency Rating		
	Current	Potential
<i>Very energy efficient - lower running costs</i>		
(92 plus) <b>A</b>		
(81-91) <b>B</b>		
(69-80) <b>C</b>		
(55-68) <b>D</b>		
(39-54) <b>E</b>		
(21-38) <b>F</b>		
(1-20) <b>G</b>		
<i>Not energy efficient - higher running costs</i>		
<b>England &amp; Wales</b>	EU Directive 2002/91/EC	