



The Lynch, Hoddesdon

£425,000

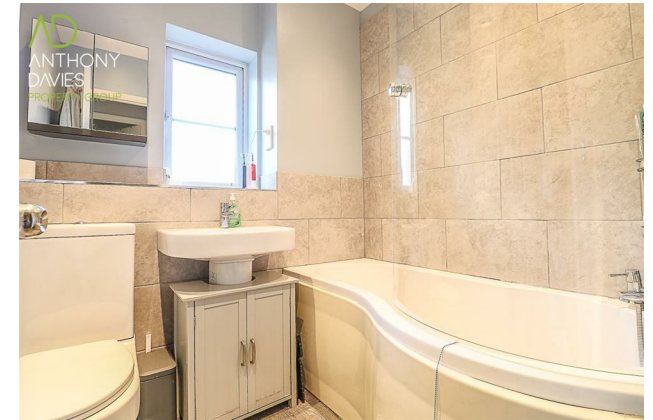
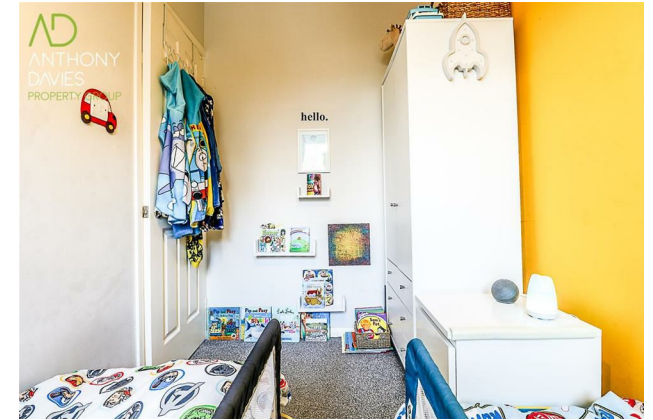
- Two Bedroom House
- Walking Distance to Town Centre & Train Station
- Nice Size Garden with Rear Access
- Highly Sought After Private Road
- Excellent Condition
- Allocated & Casual Parking
- Beautiful Setting
- Modern Kitchen & Bathroom

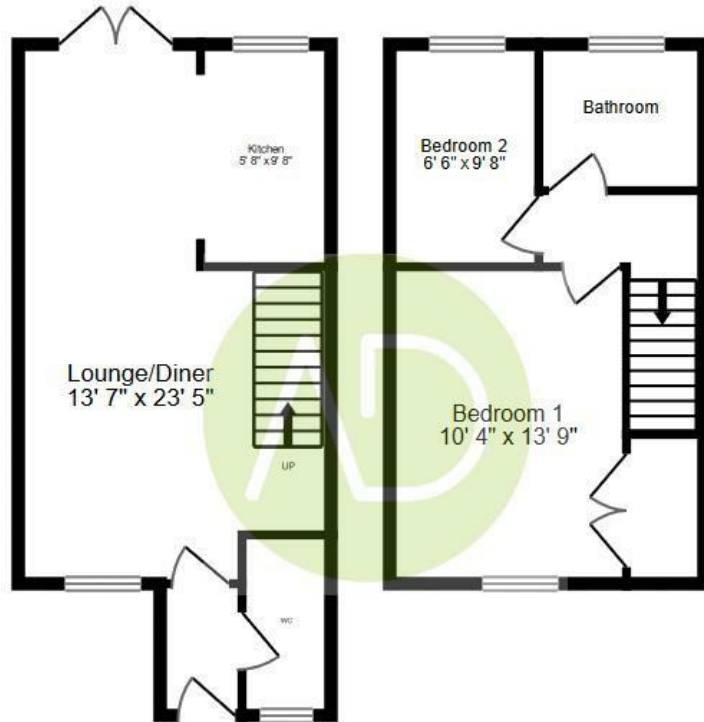
Welcome to The Lynch, Hoddesdon

ANTHONY DAVIES bring to market a two bedroom terraced home in excellent condition and situated on one of the most desired private road's in Hoddesdon. This beautiful setting boasts a stunningly kept lake and is only a short walk from the Town Centre and Broxbourne Train Station. Open plan lounge/diner, modern kitchen, downstairs w/c, good size master bedroom with plenty of storage, bathroom, nice size garden with rear access, double glazing, allocated and casual parking.

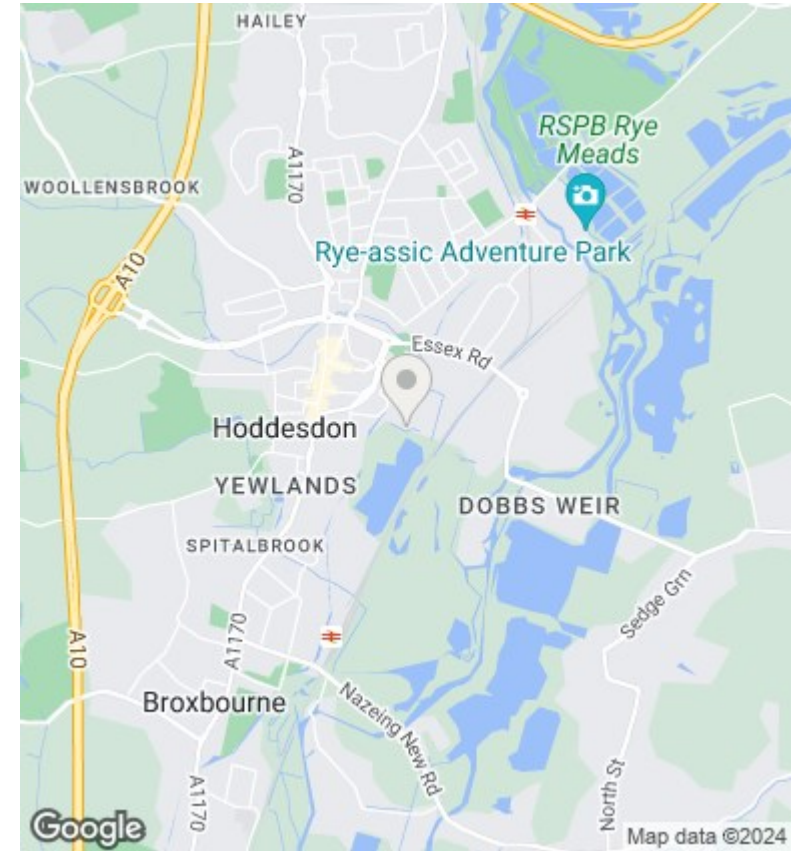
Book your viewing today.







Whilst every attempt has been made to ensure the accuracy of the floorplan contained here, measurements of doors, windows, rooms and any other items are approximate and no responsibility is taken for any error, omission or mis-statement. This plan is for illustrative purposes only and should be used as such by any prospective purchaser. The services, systems and appliances shown have not been tested and no guarantee as to their operability or efficiency can be given.



**Viewings by arrangement only.
Call 01992 470335 to make an appointment.**