



End Terrace Villa

Off-Street Parking

Double Bedroom

Lounge

Fitted Kitchen

Electric Heating & DG

Shower Room

Unfurnished

Drying Green/Garden

Available April 2024

Irving **Geddes**
W.S. • Solicitors • Estate Agents

5 Aspen Court, Crieff, PH7 3HZ

£450 PER MONTH



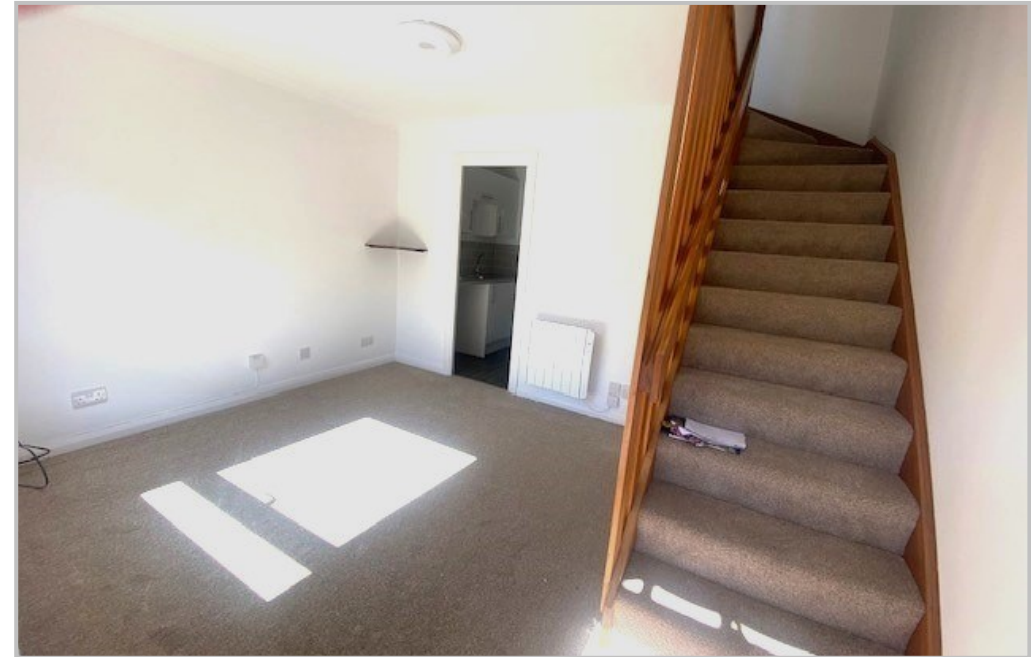
Description

A well proportioned, newly upgraded & decorated flat centrally located within the popular town of Crieff. The accommodation comprises; LOUNGE open to KITCHEN, BEDROOM and SHOWER ROOM. Warmed by electric heating & double glazed. The property is likely to be a welcome addition to the rental market and early viewing is recommended.

To be let unfurnished on a Private Residential Tenancy at £450 per month plus the usual utility expenses. A deposit and references will be required.

Energy Performance: Rated 'D' **Landlord Registration No: 53797/340/03540**

These particulars are believed to be correct, but their accuracy is not guaranteed and they do not form part of any contract. All measurements shown are approximate only.



Thinking of selling?
Call us now for a free valuation for your own property

Crieff
25 West High Street, PH7 4AU
01764 653771

Comrie
Drummond Street, PH6 2DW
01764 670325

Aberfeldy
6 The Square. PH15 2DD
01887 822722