



# CHOICE PROPERTIES

*Estate Agents*

Field View Cottage Jolly Common  
Lane,

Price £275,000



Choice Properties are delighted to offer for sale this spacious three bedroom detached dormer bungalow which requires full renovation. The property is situated in the most sought after location on a 2.3 acre plot with open views over farm land.

Offering generously proportioned rooms throughout, the well laid out accommodation comprises:-

**Front entrance door to:**

**Entrance Hall**

16'6" x 7'6"

**Reception Room**

11'1" x 12'1"

**Sitting Room/Bedroom 3**

11'1" x 12'0"

**Bedroom 1**

11'0" x 12'0"

**Dormer Bedroom 2**

10'7" x 15'3"

**Bathroom**

5'7" x 7'6"

**Dining Room**

11'0" x 12'1"

**Kitchen**

9'2" x 15'3"

**Double Garage**

6'7" x 19'5"

**Utility Room**

**Garage Loft Room**

11'8" x 19'5"

**Driveway**

**Gardens**

Gardens to front, side and rear

**Land**

**Tenure**

Freehold

**Council Tax Band**

Local Authority - East Lindsey District Council,  
The Hub,  
Mareham Road,  
Horncastle,  
Lincolnshire,  
LN9 6PH  
Tel. No. 01507 601 111  
Website: [www.e-lindsey.gov.uk](http://www.e-lindsey.gov.uk)

Council Tax Band - According to the Valuation Office Agency Website the property is currently in Council Tax Band C.

## **Viewing Arrangements**

By appointment through Choice Properties on 01507 443777.

## **Opening Hours**

Monday to Friday 9.00 a.m. to 5.00 p.m.

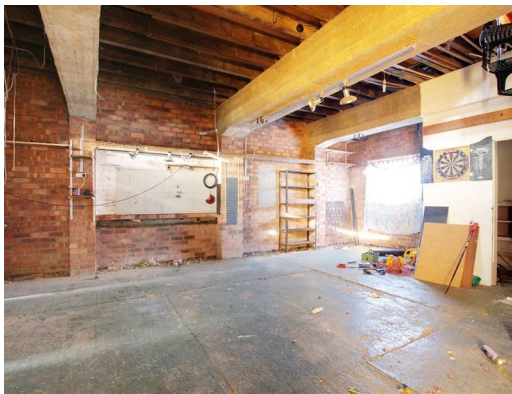
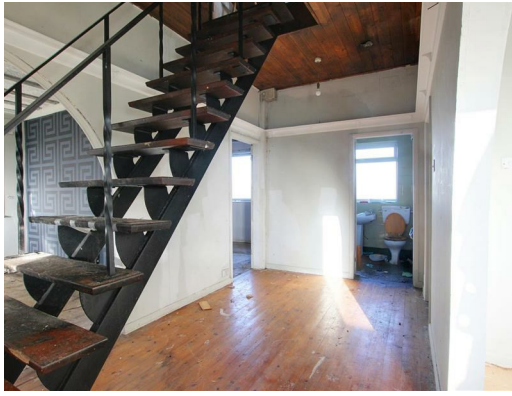
Saturday 9.00 a.m. to 3.00 p.m.

## **Making an offer**

If you are interested in making an offer on this property please have a chat with us and we will be happy to start the negotiations for you. Under money laundering regulation we will ask you to provide us with formal photographic ID by way of either a passport or driving licence. If you are travelling from afar we would advise bringing this documentation with you just in case this home is perfect for you.

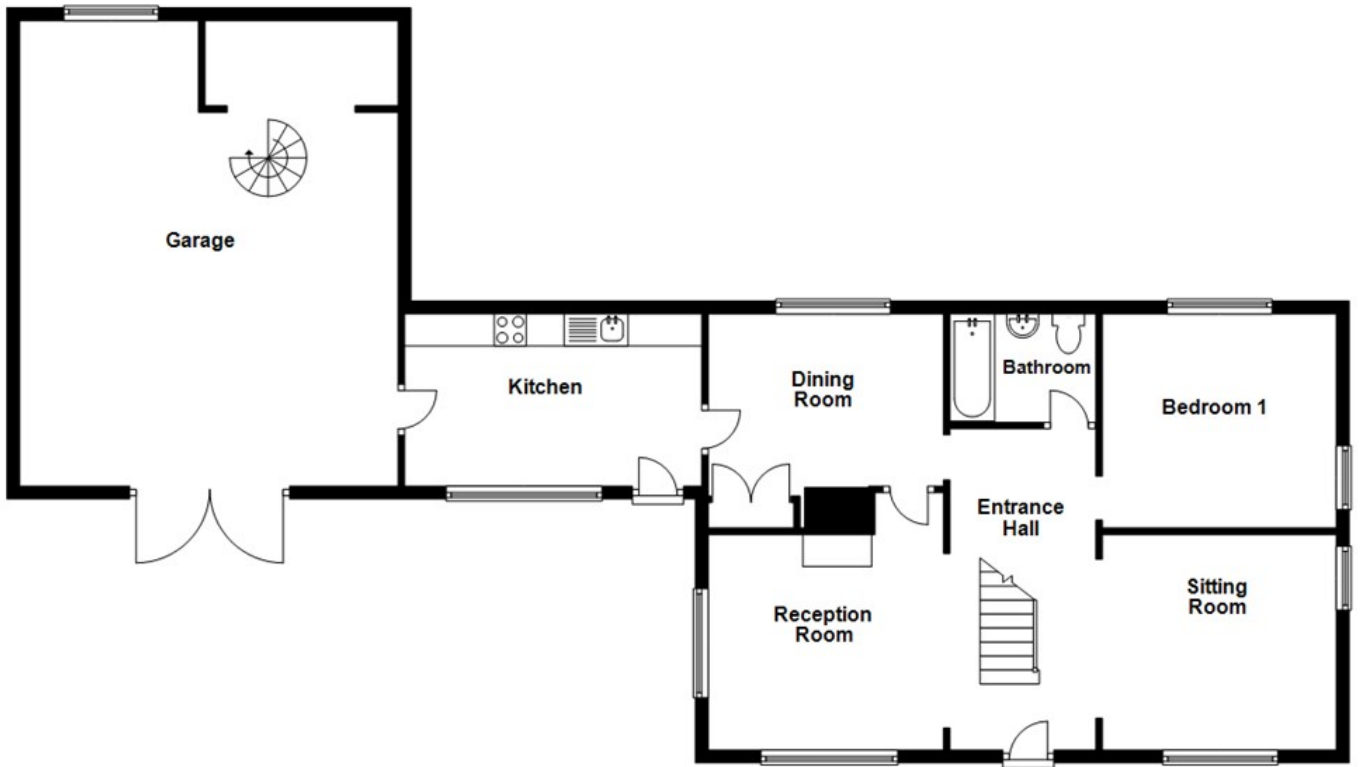
We would also like to make you aware that we will require details of your estate agents, proof of funds should you be a cash buyer and solicitors details, as this helps us to start the transaction quickly for you.

Choice Properties have not tested any included apparatus, equipment, fixtures, fittings, central heating systems or services mentioned in these particulars and purchasers are advised to satisfy themselves as to their working order and condition. Buyers are strongly advised to obtain verification from their Solicitor or Surveyor regarding the working order and condition of all the items included. These particulars do not constitute, nor constitute any part of, an offer or contract. All statements contained in these particulars as to this property are made without responsibility on the part of Choice Properties or the vendors or lessors. None of the statements contained in these particulars as to this property are to be relied on as statements or representations of fact. All measurements have been taken as a guide to prospective buyers only, and are approximate. Any intending purchasers must satisfy themselves by inspection or otherwise as to the correctness of each of the statements contained in these particulars. The vendors do not make or give and neither Choice Properties nor any person in their employment has any authority to make or give any representation or warranty whatever in relation to this property.

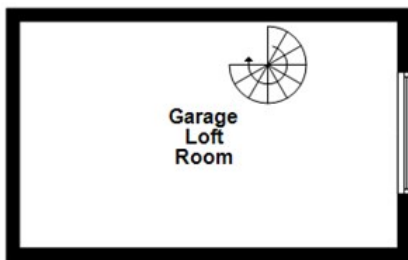




Ground Floor



First Floor



# Directions

From Sutton on sea head along the A52 towards Skegness then as you reach the village centre turn left onto Jolly Common Lane and the property can be found on your left hand side.

Energy Efficiency Rating		Current	Potential
Very energy efficient - lower running costs			
(92 plus) A			92
(81-91) B			
(69-80) C			
(55-68) D			
(39-54) E			33
(21-38) F			
(1-20) G			
Not energy efficient - higher running costs			
England & Wales		EU Directive 2002/91/EC	

Environmental Impact (CO <sub>2</sub> ) Rating		Current	Potential
Very environmentally friendly - lower CO <sub>2</sub> emissions			
(92 plus) A			
(81-91) B			
(69-80) C			
(55-68) D			
(39-54) E			
(21-38) F			
(1-20) G			
Not environmentally friendly - higher CO <sub>2</sub> emissions			
England & Wales		EU Directive 2002/91/EC	

