

Saxton Mee



SOLD
subject to contract
Residential



30 Vauxhall Road Wincobank Sheffield S9 1LD
Offers Around £89,500



30 Vauxhall Road

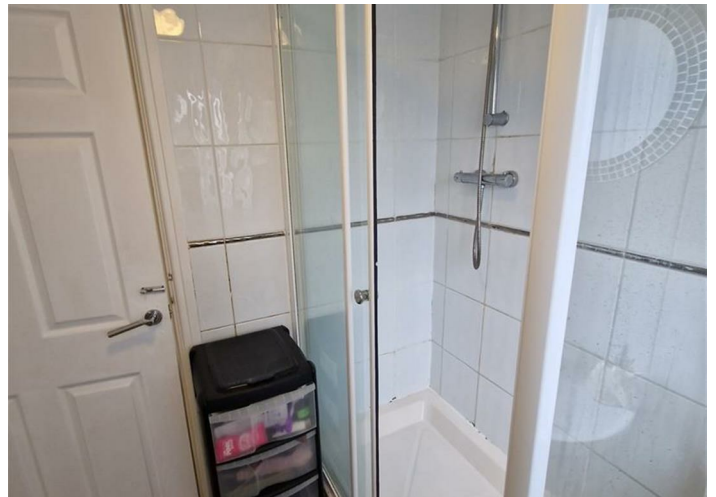
Sheffield S9 1LD

Offers Around £89,500

**** ALLOCATED PARKING SPACE **** Providing ideal accommodation for either a first time buyer or professional couple seeking a low maintenance property is this ground floor, one bedroom apartment. The property enjoys a most convenient location served by excellent amenities available at the nearby Meadowhall shopping complex whilst junction 34 of the M1 is readily accessible as well as access to the Supertram facilities and Sheffield city centre. The property benefits from an allocated parking space, gas central heating uPVC double glazing. In brief, the living accommodation comprises private entrance door which opens into the lounge, this in turn leads into the kitchen which has a range of wall, base and drawer units with a complementary work surface which incorporates the sink, drainer and the four ring hob with extractor above. There is an integrated electric oven along-with housing and plumbing for a washing machine and space for an undercounter fridge and freezer. Bedroom and shower room with WC and wash basin.

- GROUND FLOOR APARTMENT
- ALLOCATED PARKING
- GREAT FIRST HOME
- MEADOWHALL SHOPPING CENTRE
- MOTORWAY LINKS
- AMENITIES
- LOCAL SCHOOLS





OUTSIDE

Allocated parking space.

LOCATION

Located ideally for commuting the property is just a few minutes drive from the M1 motorway and Meadowhall Transport Interchange. Meadowhall shopping centre. Local amenities and transport links are also close by.

MATERIAL INFORMATION

The property is Leasehold with 679 years remaining. Ground Rent £100.00 per annum. Service Charge £550.00 per annum.

VALUER

Greg Ashmore MNAEA

Whilst we endeavour to make our sales particulars fair, accurate and reliable, they are only a general guide to the property. If there is any point which is of particular importance to you, please contact the relevant office. The Agents have not tested any apparatus, equipment, fittings or services and so cannot verify they are in working order. The buyer is advised to obtain verification. All plans, floor plans and maps are for guidance purposes only and are not to scale. Please note all measurements are approximate and should not be relied upon as exact. Under no circumstances should they be relied upon as exact or for use in planning carpets and other such fixtures, fittings or furnishings. YOUR HOME IS AT RISK IF YOU DO NOT KEEP UP REPAYMENTS ON A MORTGAGE OR OTHER LOAN SECURED ON IT.

**Crookes
Hillsborough
Stocksbridge**

245 Crookes, Sheffield S10 1TF
82 Middlewood Road, Sheffield S6 4HA
462 Manchester Road, Sheffield S36 2DU

T: 0114 266 8365
T: 0114 231 6055
T: 0114 287 0112

www.saxtonmee.co.uk

