



41 The Crofts, Hathersage, Hope Valley, S32 1DG



# 41 The Crofts

## Hathersage

Offers In The Region Of

# £265,000

In the heart of the sought-after village of Hathersage, this three-bedroom end terrace property presents an with an enclosed garden and residents' parking area.

Positioned centrally, residents benefit from easy access to a range of amenities including shops, a Post Office counter, bars, restaurants, and a primary school. Additionally, Hathersage boasts an historic open-air swimming pool and local rail links, enhancing its appeal.

Surrounded by the stunning Derbyshire countryside, the property is perfect for outdoor enthusiasts, while its proximity to major commercial centres ensures easy commutability.

Inside, the property offers flexibility for customization, featuring gas central heating and ample space to create a personalized living environment. The ground floor comprises a front entrance porch, hallway with built-in storage and WC, a fitted dining kitchen, and a living room.

On the first floor, a landing leads to two double bedrooms, a shower room, and an additional bedroom. Outside, the property includes an enclosed rear garden with a timber storage shed, ideal for outdoor storage and leisure activities.

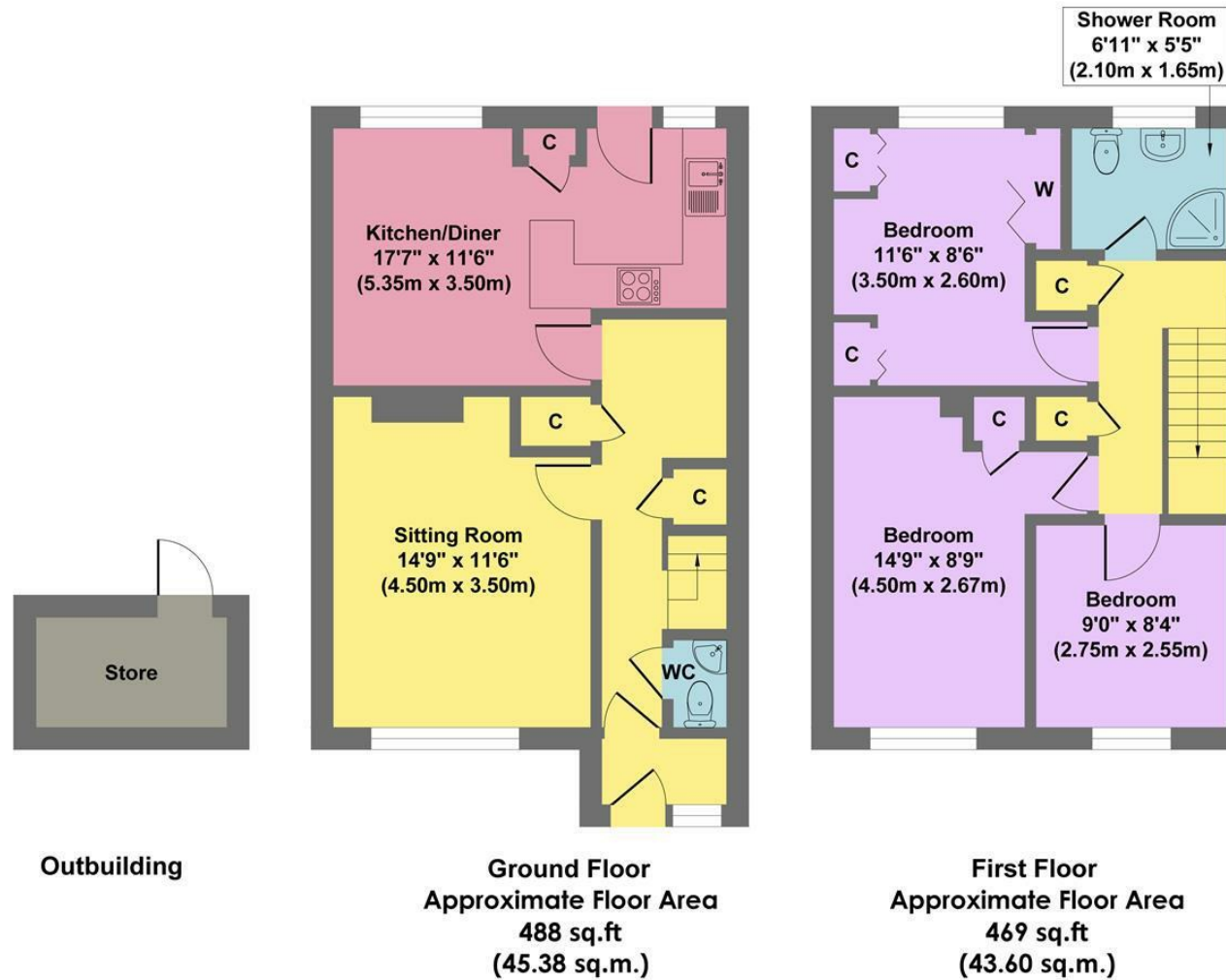
Offered with no upward chain, it's important to note that a Local Three Year Occupancy Clause Applies.

- Peaceful Hope Valley Setting
- Central Position In A Highly Desirable Village
- Excellent Village Amenities
- Local Rail Links
- Highly Regarded Primary School
- Residents Parking Area
- No Upward Chain
- A Local Three Year Occupancy Clause Applies
- EPC: TBC
- Viewings: Hathersage Office





# 41 The Crofts



**Approx. Gross Internal Floor Area 957 sq.ft / 88.98 sq.m**

Illustration for identification purposes only, measurements are approximate, not to scale

While we endeavour to make our sales particulars fair, accurate and reliable, they are only a general guide to the property and, accordingly, if there is any point, which is of particular importance to you, please contact the relevant office. The Agents have not tested any apparatus, equipment, fittings or services and so cannot verify they are in working order. The buyer is advised to obtain verification. Please note all the measurement details are approximate and should not be relied upon as exact. All plans, floor plans and maps are for guidance purposes only and are not to scale. Under no circumstances should they be relied upon as exact or for use in planning carpets and other such fixtures, fittings or furnishings. YOUR HOME IS AT RISK IF YOU DO NOT KEEP UP REPAYMENTS ON A MORTGAGE OR OTHER LOAN SECURED ON IT. 'A Life Assurance policy may be requested.' 'Written Quotations of credit terms available on request.'

Banner Cross  
 T: 0114 268 3241  
 E: [bannercross@saxtonmee.co.uk](mailto:bannercross@saxtonmee.co.uk)  
[www.saxtonmee.co.uk](http://www.saxtonmee.co.uk)

Hathersage  
 T: 01433 650009  
 E: [hathersage@saxtonmee.co.uk](mailto:hathersage@saxtonmee.co.uk)

Bakewell  
 T: 01629 815307  
 E: [bakewell@saxtonmee.co.uk](mailto:bakewell@saxtonmee.co.uk)

Matlock  
 T: 01629 828250  
 E: [matlock@saxtonmee.co.uk](mailto:matlock@saxtonmee.co.uk)

