



Hawthorn Cottage Little Edge, Eyam, S32 5RN

Saxton Mee

Hawthorn Cottage Little Edge

Offers In The Region Of

£250,000

A Charming Derbyshire Cottage In A Historic Peak District Village.

Nestled within the vibrant village of Eyam, this immaculately presented one bedroom stone built Victorian semi-detached cottage is brimming with charm and character.

Nestled in the popular village of Eyam in the heart of the Peak District National Park. Currently run as a successful holiday cottage with the contents available by separate negotiation.

Ideally located for the excellent range of shops, cafes, country inns and restaurants the pretty village has to offer. Bordered by spectacular countryside with easy access to local walks and cycle trails as well as commutable distance to major commercial centres.

Original features blend with contemporary comforts, with gas central heating and partial double glazing the accommodation comprises a hallway with built in storage, a fitted dining kitchen with a range of units and appliances. A charming sitting room with a recessed fireplace housing a log burning stove.

First floor: landing, a spacious double bedroom with exposed roof trusses and a decorative fireplace leads into the en-suite bathroom.

Exterior: an easily managed enclosed front courtyard.

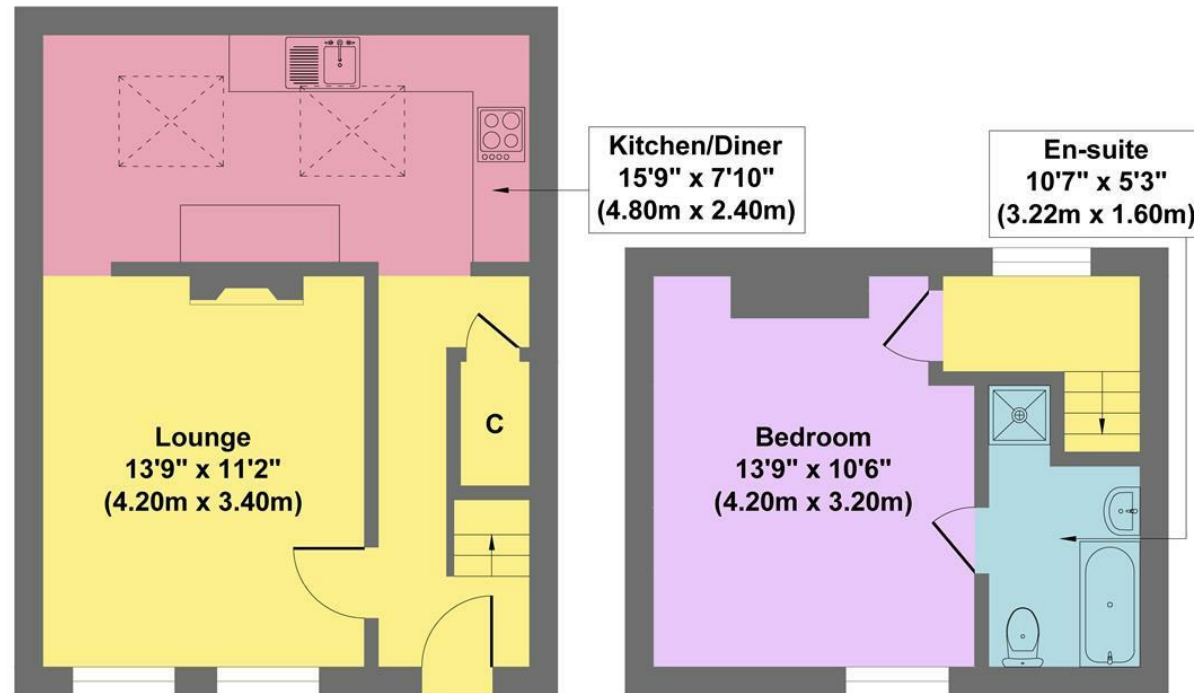
No Upward Chain.



- Peaceful Setting
- Highly Sought After Historic Village
- Excellent Shops, Amenities & Public Transport Links
- Direct Access To A Wealth Of Outdoor Pursuits
- Currently Run As A Successful Holiday Let
- Easy Commutable Distance Of Major Commercial Centres
- Contents By Separate Negotiation
- No Upward Chain
- EPC: E
- Viewings: Hathersage Office



Hawthorn Cottage



Ground Floor
Approximate Floor Area
370 sq.ft
(34.41 sq.m.)

First Floor
Approximate Floor Area
229 sq.ft
(21.28 sq.m.)

Approx. Gross Internal Floor Area 599 sq.ft / 55.69 sq.m

Illustration for identification purposes only, measurements are approximate, not to scale

While we endeavour to make our sales particulars fair, accurate and reliable, they are only a general guide to the property and, accordingly, if there is any point, which is of particular importance to you, please contact the relevant office. The Agents have not tested any apparatus, equipment, fittings or services and so cannot verify they are in working order. The buyer is advised to obtain verification. Please note all the measurement details are approximate and should not be relied upon as exact. All plans, floor plans and maps are for guidance purposes only and are not to scale. Under no circumstances should they be relied upon as exact or for use in planning carpets and other such fixtures, fittings or furnishings. YOUR HOME IS AT RISK IF YOU DO NOT KEEP UP REPAYMENTS ON A MORTGAGE OR OTHER LOAN SECURED ON IT. 'A Life Assurance policy may be requested.' 'Written Quotations of credit terms available on request.'

Banner Cross
T: 0114 268 3241
E: bannercross@saxtonmee.co.uk
www.saxtonmee.co.uk

Hathersage
T: 01433 650009
E: hathersage@saxtonmee.co.uk

Bakewell
T: 01629 815307
E: bakewell@saxtonmee.co.uk

Matlock
T: 01629 828250
E: matlock@saxtonmee.co.uk

