



The Dial Stone, Hill Head, Bradwell, Derbyshire, S33 9HY

Saxton Mee

Hill Head

Offers In The Region Of

£545,000

Enviably Panoramic Views Across Glorious Derbyshire Countryside.

A stunning three double bedroom detached character cottage with garage and easily managed gardens. Occupying a peaceful picturesque setting in the thriving Peak District village of Bradwell boasting an excellent range of local shops, amenities, primary school and country inns. Bordered by spectacular countryside in highly sought after Hope Valley offering a wealth of outdoor pursuits as well as the pretty adjoining villages. The property has been fully renovated by the present owners to an exceptionally high standard, retaining original character features alongside high quality fittings.

The spacious and flexible accommodation comprises: an impressive dual aspect, bespoke dining kitchen with a range of integrated appliances, exposed beams and a Range cooker. Cellar. A mezzanine study with exposed crook beams and stonework, a W/C and an inner hallway. A generous dual aspect sitting room with exposed beams and a rustic brick fireplace housing a stove.

At first floor: landing, a generous dual aspect double bedroom with simply fabulous views. A home office/dressing room, two further bedrooms and a family bathroom.

Exterior: a garage and easily managed gardens with seating terraces and planted beds and borders.

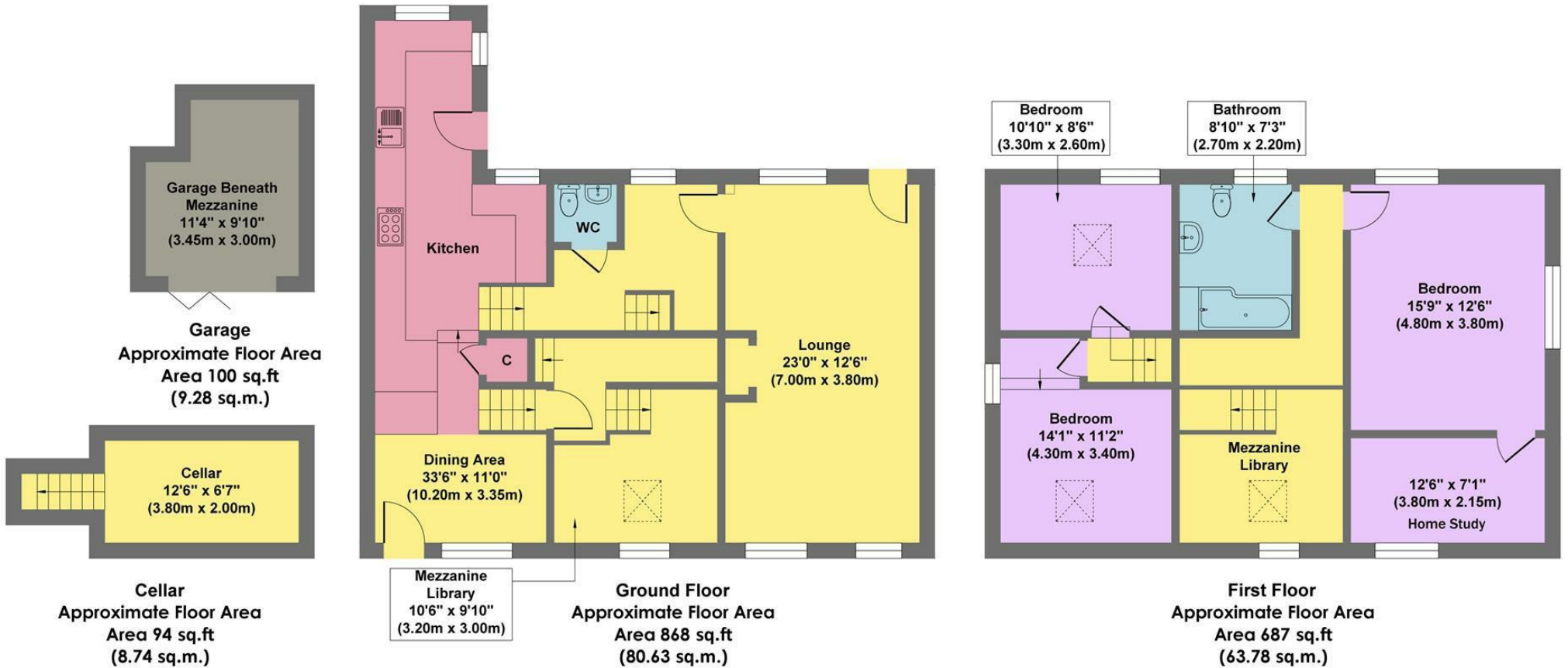


- Simply Stunning Views
- Thriving Village Community
- Fully Renovated Throughout To An Exceptionally High Standard
- Retaining Charming Character Features
- Peaceful Picturesque Setting
- Highly Regarded School Catchment
- Easy Commutable Distance Of Major Commercial Centres
- Garage & Easily Managed Gardens
- EPC: TBC
- Viewings: Hathersage Office





The Dial Stone



Approx. Gross Internal Floor Area 1749 sq.ft / 162.43 sq.m

Illustration for identification puposes only ,measurements are approximate, not to scale

While we endeavour to make our sales particulars fair, accurate and reliable, they are only a general guide to the property and, accordingly, if there is any point, which is of particular importance to you, please contact the relevant office. The Agents have not tested any apparatus, equipment, fittings or services and so cannot verify they are in working order. The buyer is advised to obtain verification. Please note all the measurement details are approximate and should not be relied upon as exact. All plans, floor plans and maps are for guidance purposes only and are not to scale. Under no circumstances should they be relied upon as exact or for use in planning carpets and other such fixtures, fittings or furnishings. YOUR HOME IS AT RISK IF YOU DO NOT KEEP UP REPAYMENTS ON A MORTGAGE OR OTHER LOAN SECURED ON IT. *A Life Assurance policy may be requested.* *Written Quotations of credit terms available on request.*

Banner Cross
T: 0114 268 3241
E: bannercross@saxtonmee.co.uk
www.saxtonmee.co.uk

Dronfield
T: 01246 290992
E: dronfield@saxtonmee.co.uk

Hathersage
T: 01433 650009
E: hathersage@saxtonmee.co.uk

Bakewell
T: 01629 815307
E: bakewell@saxtonmee.co.uk

