



358 Manor Road  
Brimington  
Chesterfield  
S43 1PP

Saxton Mee



358 Manor Road,  
Brimington, Chesterfield S43 1PP

A deceptively spacious FOUR DOUBLE BEDROOMED detached family home offering 2597 sq ft of accommodation and large enclosed garden to the rear. The property has undergone a scheme of redecoration and new carpets in the past month and is being sold with no upward chain.

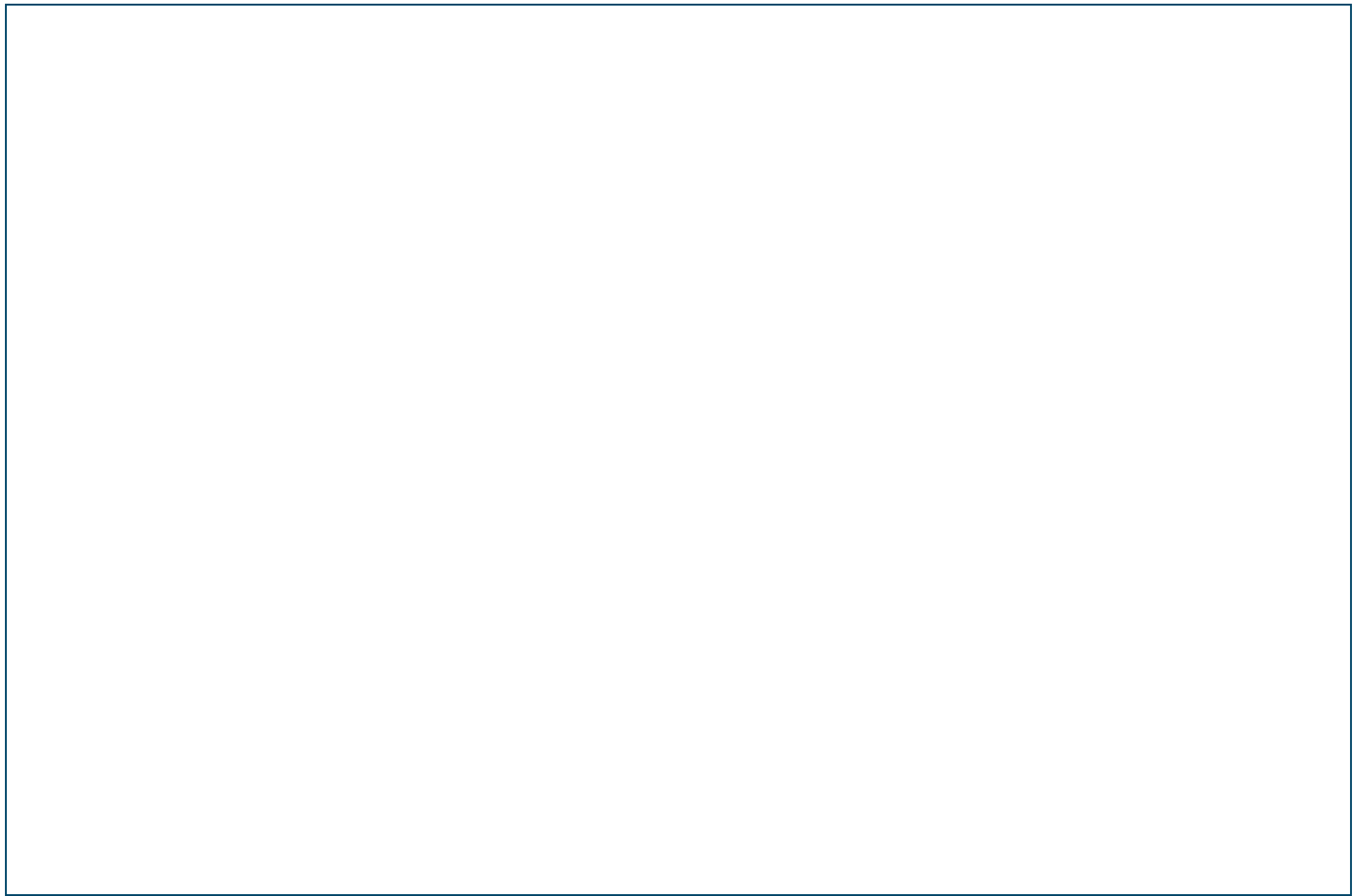
Located in a popular residential area being close to Chesterfield town centre and the Royal hospital at Calow, the property has been considerably extended to provide superb open plan family living space which along with gas central heating and double glazing includes: entrance hall, inner lobby with downstairs WC and separate utility room, good sized front facing lounge with feature fire, impressive open plan living/dining kitchen having a range of integrated appliances, large island, ceiling lanterns for added natural light and doors opening onto the rear garden. Large studio/play area which has a store room and WC and could be utilised for dependant relative if required. There is a separate office and access into the garage from a second inner hall.

First floor with master bedroom one having a range of fitted wardrobes to one wall and en-suite shower room, bedroom two with walk in cupboard, double bedrooms three and four and large family bathroom with bath and separate walk in shower.

To the front of the house is off road parking for several vehicles and access into the garage. To the rear is a large south facing garden with extensive decked entertaining area, pergola, lawns and mature shrubs.

- Vastly extended FOUR DOUBLE BEDROOMED detached family home
- Large south facing gardens - ideal for entertaining
- Deceptively spacious - must be viewed to be appreciated
- Impressive open plan living with highly versatile accommodation
- Freehold
- Over 2500 sq ft of accommodation
- Recently decorated and new carpets to most bedrooms
- No upward chain
- EPC: D
- Council Tax Band: E



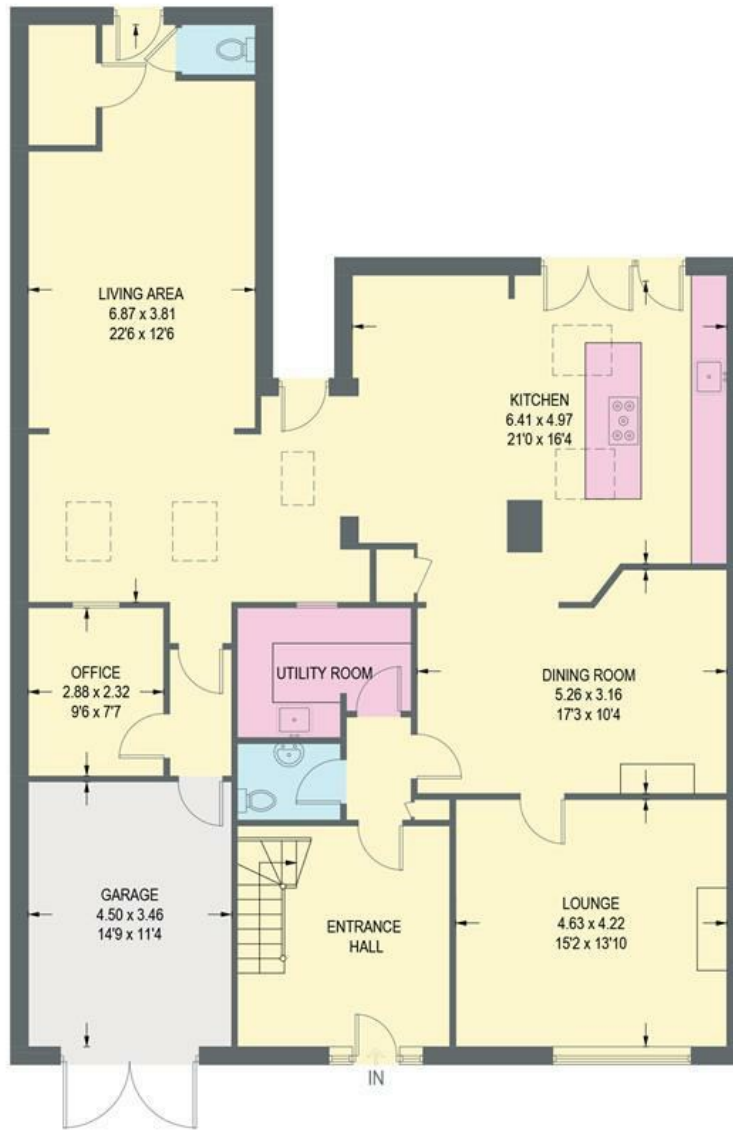






# 358 MANOR ROAD

APPROXIMATE GROSS INTERNAL AREA = 241.4 SQ M / 2597.5 SQ FT



**GROUND FLOOR**  
169.1 SQ M / 1819.7 SQ FT



**FIRST FLOOR**  
72.3 SQ M / 777.8 SQ FT

Illustration for identification purposes only,  
measurements are approximate, not to scale.