



220a Top Road, Calow, Chesterfield, S44 5TE

Saxton Mee



# 220a Top Road

## Calow

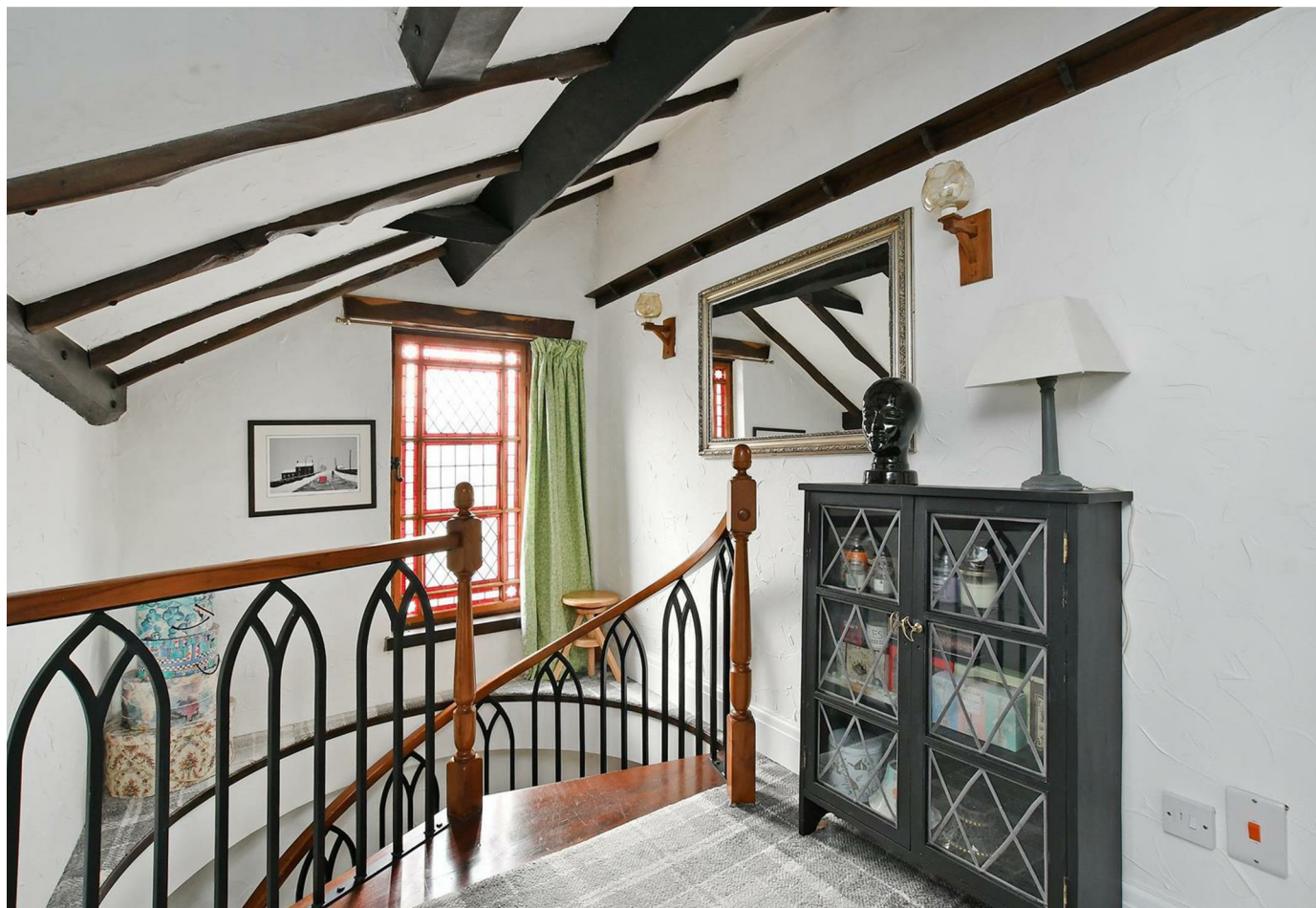
Guide Price

# £350,000

Guide Price £350,000 - £365,000

This most attractive two/three bedroomed detached cottage provides excellent access to the town centre, motorway network and range of local amenities including Chesterfield Royal Hospital.

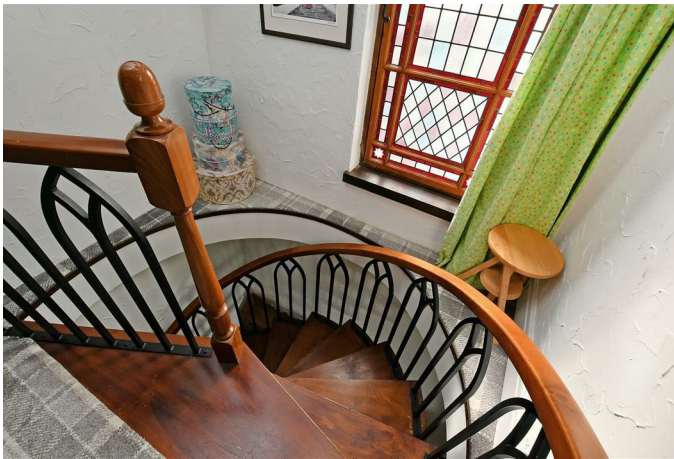
The well presented and offers deceptively well proportioned accommodation (1800 sq ft!) has been recently decorated and offers gas fired central heating, uPVC double glazing and possesses a wealth of character and charm. Entrance hall with downstairs shower room, beautifully proportioned living room with log burner set within a brick inglenook fireplace, well equipped breakfast kitchen, rear porch, utility garden room, study and snug/bedroom three. Feature spiral staircase to the first floor landing, large master bedroom with feature period fireplace and vaulted beamed ceiling, double bedroom two, impressive attractively refurbished bathroom with slipper bath and separate walk in shower. Ample gravelled parking for several vehicles, private rear garden with artificial lawn and patio seating area.



- Delightful nicely proportioned period cottage offers 1800 sq ft of accommodation
- Superbly located for the Royal Hospital and motorway network links
- Well presented and recently decorated
- Two/Three bedrooms and two bathrooms
- Beautifully proportioned living room with log burner
- Impressive refurbished bathroom
- Gas central heating and uPVC double glazing
- Viewing recommended
- EPC: E
- Freehold/ Vacant Possession, No Upward Chain / Council Tax Band: D









# 220A TOP ROAD

APPROXIMATE GROSS INTERNAL AREA  
167.6 SQ M / 1804 SQ FT

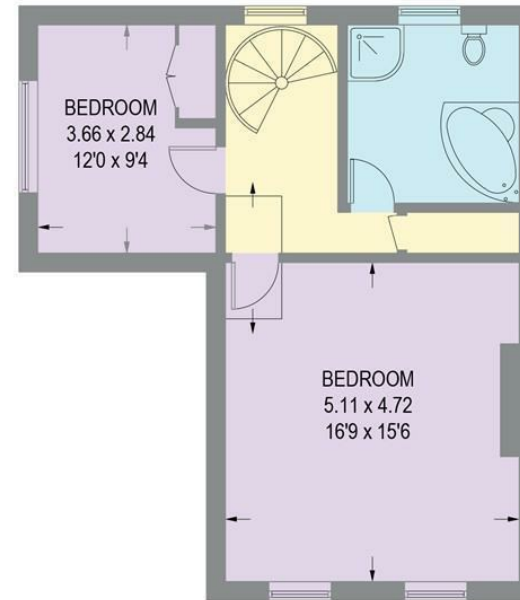
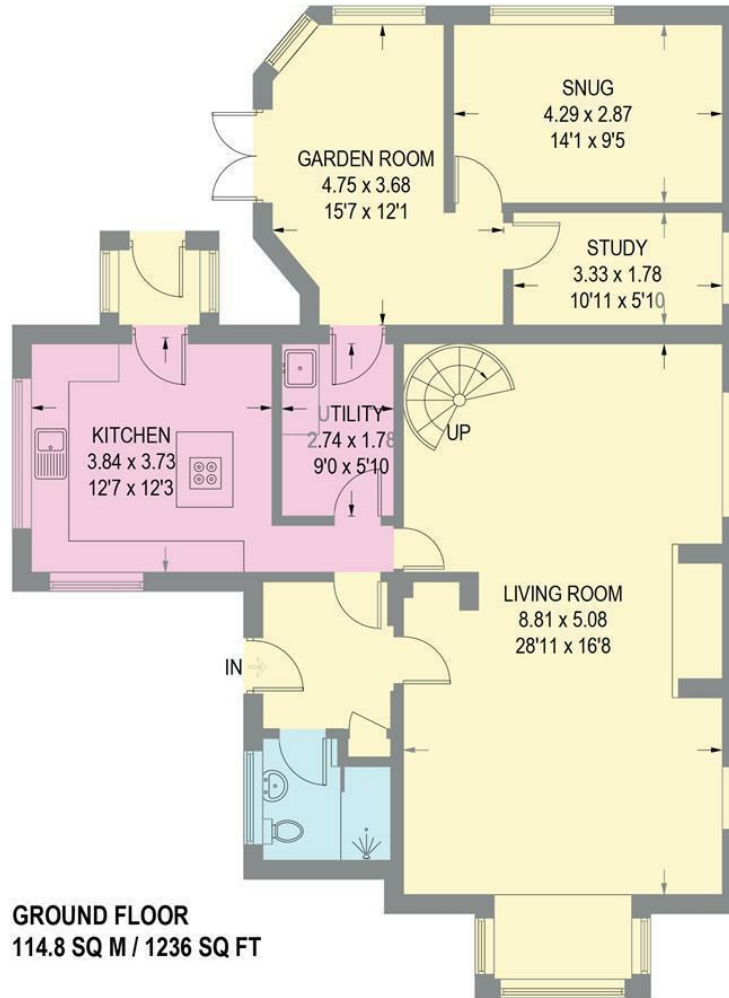


Illustration for identification purposes only, measurements are approximate, not to scale.

While we endeavour to make our sales particulars fair, accurate and reliable, they are only a general guide to the property and, accordingly, if there is any point, which is of particular importance to you, please contact the relevant office. The Agents have not tested any apparatus, equipment, fittings or services and so cannot verify they are in working order. The buyer is advised to obtain verification. Please note all the measurement details are approximate and should not be relied upon as exact. All plans, floor plans and maps are for guidance purposes only and are not to scale. Under no circumstances should they be relied upon as exact or for use in planning carpets and other such fixtures, fittings or furnishings. YOUR HOME IS AT RISK IF YOU DO NOT KEEP UP REPAYMENTS ON A MORTGAGE OR OTHER LOAN SECURED ON IT. \*A Life Assurance policy may be requested.\* \*Written Quotations of credit terms available on request.\*

Bannercross  
T: 0114 268 3241  
E: [bannercross@saxtonmee.co.uk](mailto:bannercross@saxtonmee.co.uk)  
[www.saxtonmee.co.uk](http://www.saxtonmee.co.uk)

Dronfield  
T: 01246 290992  
E: [dronfield@saxtonmee.co.uk](mailto:dronfield@saxtonmee.co.uk)

Hathersage  
T: 01433 650009  
E: [hathersage@saxtonmee.co.uk](mailto:hathersage@saxtonmee.co.uk)

Bakewell  
T: 01629 815307  
E: [bakewell@saxtonmee.co.uk](mailto:bakewell@saxtonmee.co.uk)

Matlock  
T: 01629 828250  
E: [matlock@saxtonmee.co.uk](mailto:matlock@saxtonmee.co.uk)

