



## 551a Ecclesall Road, Sheffield S11 8PR £1,200 Per Calendar Month

Sharers / Student accommodation - Lovely fully furnished 3 bedroomed flat situated above the Bridal House between Sainsburys local and Nonnas on Ecclesall Road. Close to local bars, restaurants, parks and public transport and benefitting from double glazing and central heating.

First floor entrance via intercom system

Living room with wall mounted flat screen TV, grey corner sofa with removable covers incorporating lift up storage chaise longue and pull out section to form guest double bed, side coffee tables and dining table and chairs. Fitted kitchen with washer drier, oven, hob, tall fridge freezer and microwave. Shower room with large shower cubicle, toilet and wash hand basin.

Front facing bedroom 1 – with double bed, wardrobe, bedside cabinet, desk/dressing table, chair, chest of drawers and blackout blind.

Second Floor - Front facing bedroom 2 – with double bed, fitted wardrobe, bedside cabinet, desk/dressing table, chair, chest of drawers and blackout blind.

Rear facing bedroom 3 – with double bed, fitted wardrobe, bedside cabinet, desk/dressing table, chair, chest of drawers and blackout blind.

Deposit - £1,170

Energy Performance Rating E

FURNISHED 6-12 MONTH TENANCY

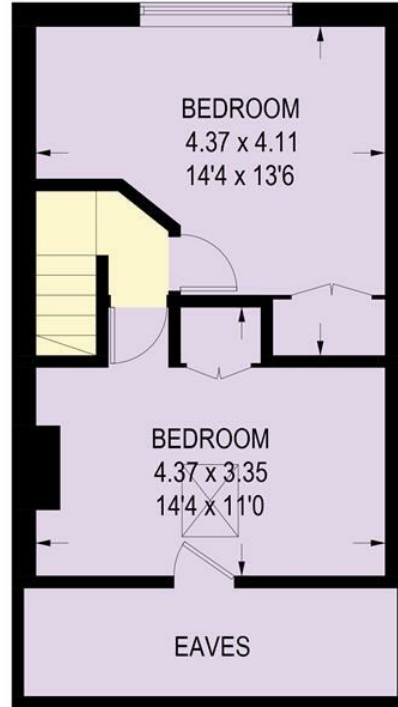
Council Tax Band: A

**551A ECCLESALL ROAD**

APPROXIMATE GROSS INTERNAL AREA = 75.7 SQ M / 815 SQ FT  
(EXCLUDING EAVES)

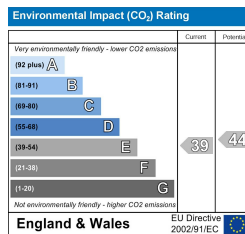
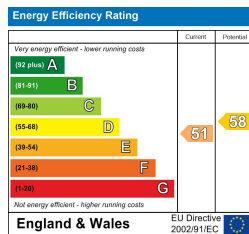


**GROUND FLOOR**  
45.9 SQ M / 494 SQ FT



**FIRST FLOOR**  
29.8 SQ M / 321 SQ FT

Illustration for identification purposes only, measurements are approximate, not to scale.



Banner Cross  
Hathersage  
Bakewell  
Matlock  
www.saxtonmee.co.uk

949-951 Ecclesall Road, Sheffield S11 8TN  
3 Bank View, Main Road, Hathersage S32 1BB  
Matlock Street, Bakewell DE45 1EE  
27 Causeway Lane, Matlock, DE4 3AR

T: 0114 268 3241  
T: 01433 650009  
T: 01629 815307  
T: 01629 828250

E: bannercross@saxtonmee.co.uk  
E: hathersage@saxtonmee.co.uk  
E: bakewell@saxtonmee.co.uk  
E: matlock@saxtonmee.co.uk