

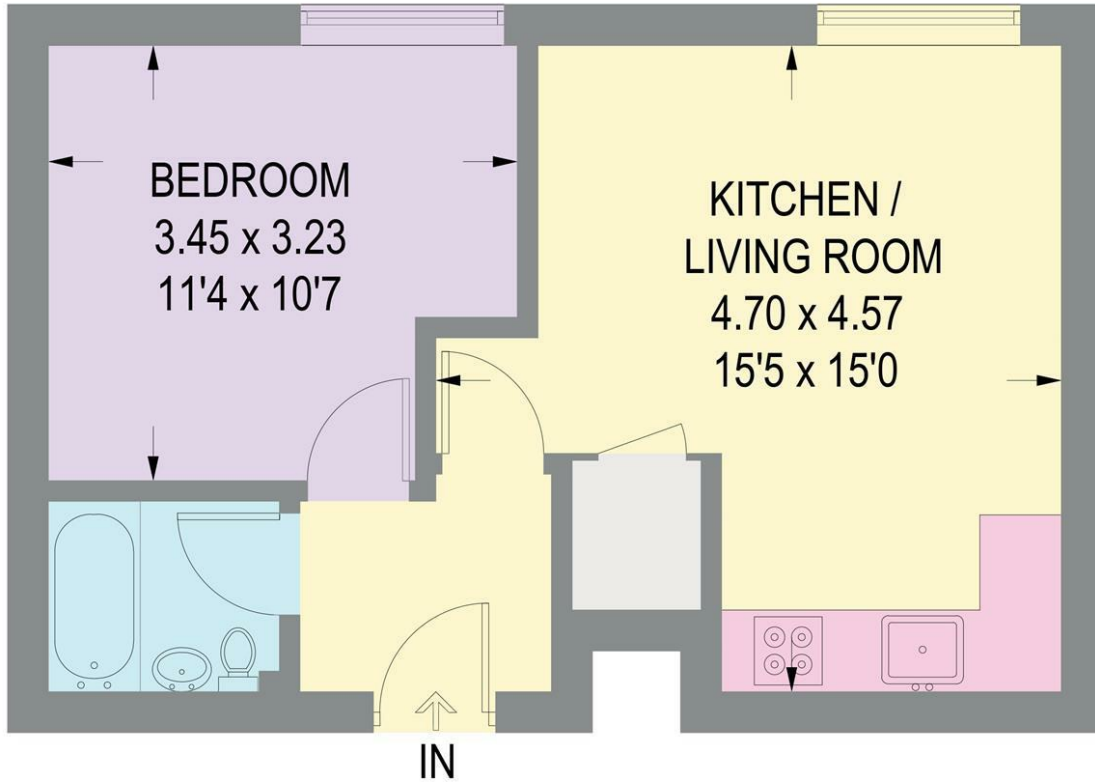


Flat 3 Wiseton Court 6 Wiseton Road, Sheffield S11 8SB £630 Per Calendar Month

Available to let is this spacious one bedroom, first floor apartment. The property briefly comprises of entrance lobby, good size lounge/dining room, well fitted kitchen including a washing machine, good sized double bedroom and modern bathroom with full suite and electric shower. Outside: communal area and parking to the rear. Conveniently located for nearby hospitals, universities and the excellent amenities of Ecclesall Road and Sharrow Vale Road with first class shops, restaurants and local parks. FURNISHED 6-12 MONTHS TENANCY. Restrictions: No smokers, sharers or pets. Energy Efficiency Rating D

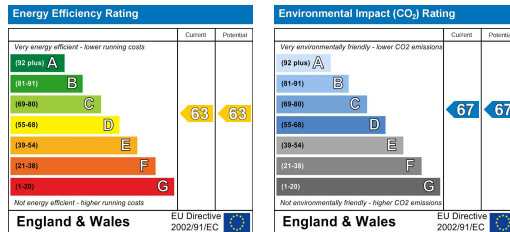
3 WISETON COURT

APPROXIMATE GROSS INTERNAL AREA = 34.8 SQ M / 374 SQ FT



FIRST FLOOR

Illustration for identification purposes only, measurements are approximate, not to scale.



Banner Cross
 Hathersage
 Bakewell
 Matlock
www.saxtonmee.co.uk

949-951 Ecclesall Road, Sheffield S11 8TN
 3 Bank View, Main Road, Hathersage S32 1BB
 Matlock Street, Bakewell DE45 1EE
 27 Causeway Lane, Matlock, DE4 3AR

T: 0114 268 3241
 T: 01433 650009
 T: 01629 815307
 T: 01629 828250

E: bannercross@saxtonmee.co.uk
 E: hathersage@saxtonmee.co.uk
 E: bakewell@saxtonmee.co.uk
 E: matlock@saxtonmee.co.uk