



26a Ashfurlong Road, Dore, Sheffield, S17 3NL



26a Ashfurlong Road

Dore

Offers Around

£595,000

Situated on a quiet cul de sac, in the popular village of Dore, is this four bedroom well proportioned detached house with a modern open plan layout and great potential for a loft conversion or to extend to the side.

The property briefly comprises: Reception hall, cloakroom with WC, large open plan sitting room with magnificent Derbyshire gritstone fireplace and patio doors to the garden leading to the dining room, breakfast kitchen. To the first floor are three good double bedrooms and a good sized fourth bedroom, bathroom with full suite and a separate shower. Outside, a front garden is enclosed with hedges and lawned, a driveway leads to a car port and garage and also the enclosed rear garden.

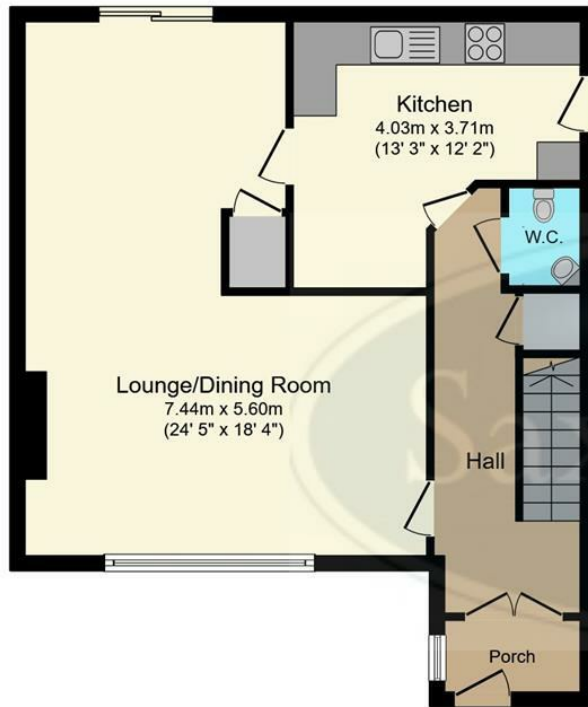
Dore Village has a lovely community feel with shops, restaurants and excellent schools and is within easy walking distance of the beautiful open countryside of Blacka Moor and the Peak District. Dore is served with good transport links, having key bus routes to the City Centre and Peak District and also Dore Train Station nearby.



- A Great Detached Family House
- Potential For Loft Conversion Or To Extend To Side
- Open Plan Sitting Room And Dining Room
- Patio Doors Leading To Enclosed Rear Garden
- Feature Gritstone Fireplace With Log Effect Fire
- Plentiful Off Road Parking With Car Port And Garage
- Quiet Location And Walking Distance Of Dore Village And Good Amenities
- Catchment Area For Excellent Schools
- EPC Rating C/Council Tax Band F/Freehold
- Viewing Via Banner Cross Office



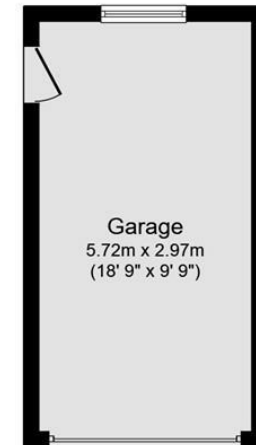




Ground Floor
Floor area 61.2 m² (658 sq.ft.)



First Floor
Floor area 59.1 m² (636 sq.ft.)



Garage
Floor area 17.0 m² (183 sq.ft.)

TOTAL: 137.2 m² (1,477 sq.ft.)

This floor plan is for illustrative purposes only. It is not drawn to scale. Any measurements, floor areas (including any total floor area), openings and orientations are approximate. No details are guaranteed, they cannot be relied upon for any purpose and do not form any part of any agreement. No liability is taken for any error, omission or misstatement. A party must rely upon its own inspection(s). Powered by www.Propertybox.io

While we endeavour to make our sales particulars fair, accurate and reliable, they are only a general guide to the property and, accordingly, if there is any point, which is of particular importance to you, please contact the relevant office. The Agents have not tested any apparatus, equipment, fittings or services and so cannot verify they are in working order. The buyer is advised to obtain verification. Please note all the measurement details are approximate and should not be relied upon as exact. All plans, floor plans and maps are for guidance purposes only and are not to scale. Under no circumstances should they be relied upon as exact or for use in planning carpets and other such fixtures, fittings or furnishings. YOUR HOME IS AT RISK IF YOU DO NOT KEEP UP REPAYMENTS ON A MORTGAGE OR OTHER LOAN SECURED ON IT. 'A Life Assurance policy may be requested.' 'Written Quotations of credit terms available on request.'

Banner Cross
T: 0114 268 3241
E: bannercross@saxtonmee.co.uk
www.saxtonmee.co.uk

Hathersage
T: 01433 650009
E: hathersage@saxtonmee.co.uk

Bakewell
T: 01629 815307
E: bakewell@saxtonmee.co.uk

Matlock
T: 01629 828250
E: matlock@saxtonmee.co.uk

