



44 St. Andrews Road, Sheffield, S11 9AL



44 St. Andrews Road

Offers Around

£675,000

A substantial, extended, five bedroom semi detached family home offering spacious accommodation throughout and situated in this highly regarded area, close to all local amenities and in the catchment area for excellent schools. This delightful much loved family home is well worthy of an internal inspection and briefly comprises;

GROUND FLOOR: Entrance hallway, bay windowed living room with feature fireplace, extended lounge with feature fireplace and patio doors onto the rear garden, extended fitted dining kitchen with a range of units, downstairs w.c.

FIRST FLOOR: Two great size double bedrooms each with built in storage, a smaller good size single bedroom, family bathroom with bath and separate shower cubicle and a separate w.c.
SECOND FLOOR: Two bedrooms-one of them having a wash hand basin.

To the front of the property is a garden with a good amount of off road parking. and attached garage. To the rear of the property is a private garden with patio, lawn areas and a range of mature shrubs and trees.

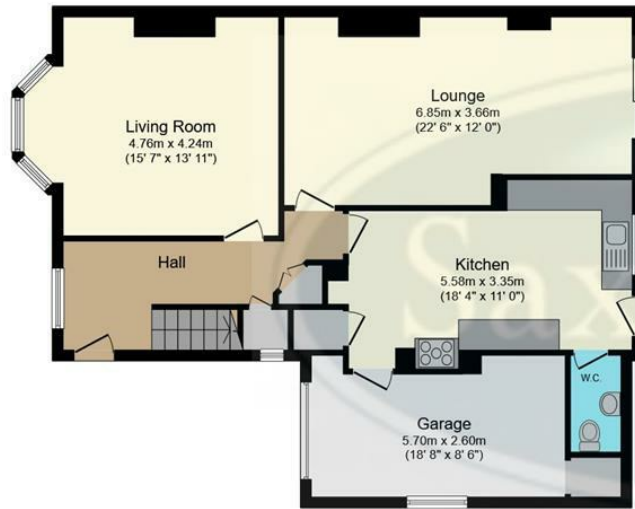
BOOK YOUR VIEWING TODAY!

Freehold
Council Tax Band E

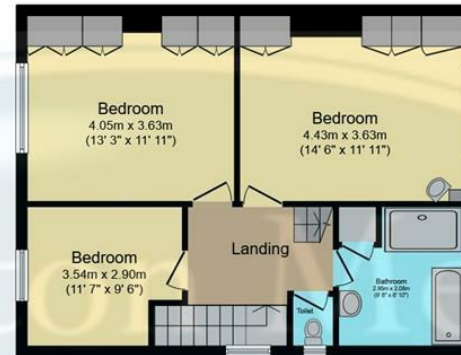
- Extended To The Rear
- Set Over Three Floors
- Downstairs w.c
- Great Size Rooms Throughout
- Set Back From The Road
- Front & Rear Gardens
- Freehold
- Council Tax Band E
- EPC Awaited
- Viewings Via Banner Cross Branch







Ground Floor



First Floor



Second Floor

Total floor area 198.7 m² (2,139 sq.ft.) approx

This plan is for illustration purposes only and may not be representative of the property. Plan not to scale. Powered by PropertyBox

While we endeavour to make our sales particulars fair, accurate and reliable, they are only a general guide to the property and, accordingly, if there is any point, which is of particular importance to you, please contact the relevant office. The Agents have not tested any apparatus, equipment, fittings or services and so cannot verify they are in working order. The buyer is advised to obtain verification. Please note all the measurement details are approximate and should not be relied upon as exact. All plans, floor plans and maps are for guidance purposes only and are not to scale. Under no circumstances should they be relied upon as exact or for use in planning carpets and other such fixtures, fittings or furnishings. YOUR HOME IS AT RISK IF YOU DO NOT KEEP UP REPAYMENTS ON A MORTGAGE OR OTHER LOAN SECURED ON IT. *A Life Assurance policy may be requested.* *Written Quotations of credit terms available on request.*