



12 The Meadows, Grisedale Road, Great Longstone, Derbyshire, DE45 1TP

Saxton Mee

12 The Meadows, Grisedale

Great Longstone

Offers Around

£375,000

Situated in this very popular location, on a small cul de sac, a superbly and very tastefully, substantially extended three bedroom semi detached family home which must be viewed internally to do full justice. Fitted out to a very high standard by the current owners and for sale with early vacant possession available.

Great Longstone is a very popular Peak District Village with local shops, country inns and highly regarded primary school and the nearby recreational ground. Many pretty villages on the doorstep and access to a wealth of outdoor pursuits.

Reception hall with oak flooring, utility room, lounge, large through living kitchen, kitchen area attractively fitted out with extensive range of units, adjacent dining area with French windows leading out into the garden. First Floor: fantastic master bedroom with lovely country views and large en suite shower room, further double bedroom and third bedroom, bathroom with full suite and shower. Outside: on a corner plot, good off road parking to the front and attractive garden to the side and rear.

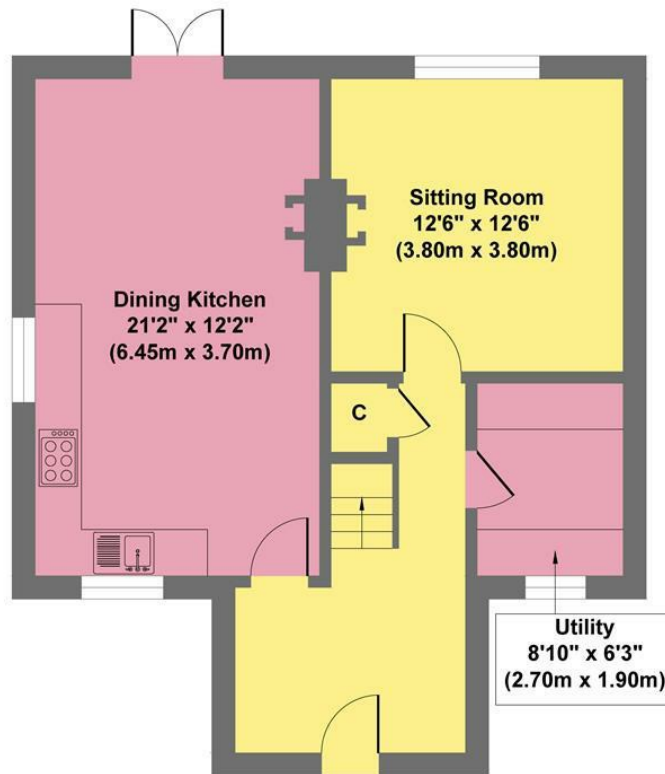


- Very Sought After Peak District Village
- Popular Quiet Cul De Sac
- Substantially Extended to the Side - Excellent Family Home
- Superb Large Through Living Kitchen with French Windows
- Very Large Master Bedroom with Large En Suite Bathroom
- Good Off Road Parking to the Front & Corner Plot
- Excellent Local Amenities and Highly Regarded Primary School
- Early Vacant Possession and Completed Chain
- EPC Rating TBC
- Viewing Bakewell Office

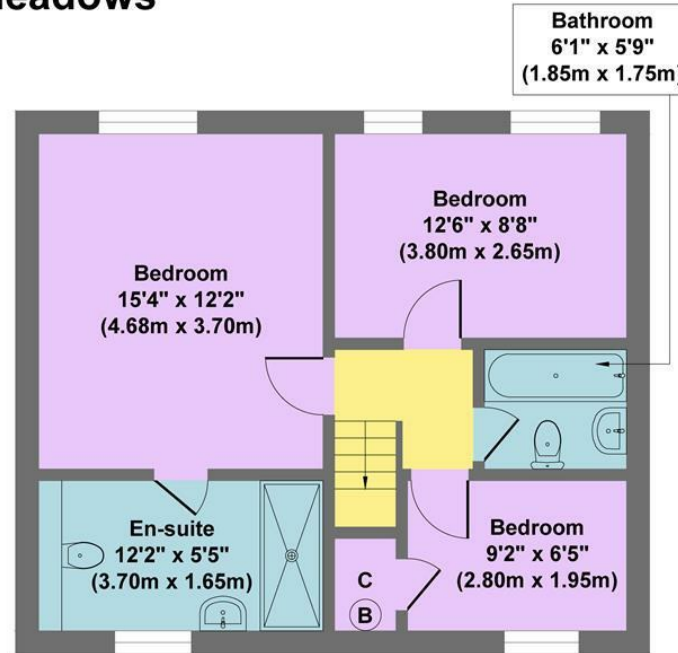




12 The Meadows



Ground Floor
Approximate Floor Area
605 sq.ft
(56.24 sq.m.)



First Floor
Approximate Floor Area
531 sq.ft
(49.32 sq.m.)

Approx. Gross Internal Floor Area 1136 sq.ft / 105.56 sq.m

Illustration for identification puposes only ,measurements are approximate, not to scale

While we endeavour to make our sales particulars fair, accurate and reliable, they are only a general guide to the property and, accordingly, if there is any point, which is of particular importance to you, please contact the relevant office. The Agents have not tested any apparatus, equipment, fittings or services and so cannot verify they are in working order. The buyer is advised to obtain verification. Please note all the measurement details are approximate and should not be relied upon as exact. All plans, floor plans and maps are for guidance purposes only and are not to scale. Under no circumstances should they be relied upon as exact or for use in planning carpets and other such fixtures, fittings or furnishings. YOUR HOME IS AT RISK IF YOU DO NOT KEEP UP REPAYMENTS ON A MORTGAGE OR OTHER LOAN SECURED ON IT. 'A Life Assurance policy may be requested.' 'Written Quotations of credit terms available on request.'

Banner Cross
 T: 0114 268 3241
 E: bannercross@saxtonmee.co.uk
www.saxtonmee.co.uk

Hathersage
 T: 01433 650009
 E: hathersage@saxtonmee.co.uk

Bakewell
 T: 01629 815307
 E: bakewell@saxtonmee.co.uk

Matlock
 T: 01629 828250
 E: matlock@saxtonmee.co.uk

